
SAN FRANCISCO UNIFIED SCHOOL DISTRICT
2011 PROPOSITION A BOND PROGRAM
Miraloma ES & Sunnyside ES Green Schoolyard

ADDENDUM NO. 1

PROJECT: **Miraloma Elementary School**
175 Omar Way, SF, CA 94127

DATE: **March 24, 2016**

Sunnyside Elementary School
250 Foerster Street, SF, CA 94112

OWNER: San Francisco Unified School District
135 Van Ness Avenue
San Francisco, CA 94103

DSA FILE NO.: **NA**

DSA APP. NO.: **NA**

Notice is hereby given to all prospective bidders that plans and specifications on the subject project are modified as hereinafter set forth. This Addendum shall be attached to and form a part of the plans and specifications. All bidders must acknowledge receipt of this addendum on the Bid Form. In case of difference with previous addenda or communications, this addendum takes precedence.

It is the responsibility of all bidders to notify all subcontractors from whom they request bids and from whom they accept bids of all changes contained in this addendum.

PROJECT MANUAL

1. Item No. PM-1

Reference: **00400 – Bid Form**

Description: Miraloma Additive Alternate NO. M2: Kindergarten Gate, and Miraloma Additive Alternate NO. M3: Lower Play Yard Gate, have been deleted from the scope of work.

2. Item No. PM-2

Reference: **01230 – Alternates**

Description: Delete 3.1.A.2 "Miraloma Elementary School, Additive Alternate No. M2: Kindergarten Gate" and 3.1.A.3 "Miraloma Elementary School, Additive Alternate No. M3: Lower Play Yard Gate." These additive alternates are no longer part of the scope of work.

3. Item No. PM-3

Reference: **02221 – Trenching & Backfill**

Description: Section 3.05.A.1.e, revise the statement to read: "Irrigation pressure pipe: i. Depth: per SECTION 02820 + pipe O.D. + 4" bed. ii. Width: 8" + pipe O.D."

Description: Section 3.05.D.2, revise the statement to read: "Place and compact the select bedding sand backfill material to 4" above the top of the pipe in maximum 8" lifts. Carefully compact this material around and under the pipe to 95% relative compaction min."

Description: Section 3.05.D.4, delete item in its entirety.

4. Item No. PM-4

Reference: 02820 – Irrigation Work

Description: Section 2.01.B, delete section in its entirety.

Description: Section 2.01.C, revise items 1 & 2 respectively: “1. Unless otherwise noted, all pipe sizes \leq 1” shall be PVC 1120, SCH. 40 and shall conform to ASTM D1785, D1784, cell class 12454-A...2. Unless otherwise noted, pipe sizes $>$ 1” shall be galvanized steel SCH. 40, ASTM A 120. Fittings shall be ANSI B16.3 galvanized malleable-iron threaded fittings. Pipe shall be wrapped in 10 mil. Pasco pipe wrap, or approved equal.”

Description: Section 3.05, add the following sub-section: “C. Bedding shall be select bedding sand per SECTION 02221, compacted to 95% relative compaction min.”

5. Item No. PM-5

Reference: 05500 – Metal Fabrication

Description: Delete specification in its entirety.

6. Item No. PM-6

Reference: Appendix A – Hazardous Materials Specifications

Description: In Section 01011, Summary of Hazardous Material Work; Section 1.03, Scope of Work, delete A.1.a (Bid Alternate #M2) and delete A.1.b (Bid Alternate #M3). These additive alternates are no longer part of the scope of work.

DRAWINGS

1. Item No. AD1-1

Reference: Drawing G-0.0 Cover Sheet; Bid Alternate Summary

Description: Delete Miraloma Elementary “2. Bid Alternate #M2: Kindergarten Gate” and Miraloma Elementary “3. Bid Alternate #M3: Lower Play Yard Gate”

2. Item No. AD1-2

Reference: Drawing LM-1.0 Demolition Plan

Description: Delete Details “(2) Kindergarten Gate (Bid Alternate #M2)” and Detail “(3) Lower Play Yard Gate (Bid Alternate #M3)””; and all notes and references to these two additive alternates that have been deleted from the scope of work.

3. Item No. AD1-3

Reference: Drawing LM-2.0 Site Plan

Description: Delete Details “(2) Kindergarten Gate (Bid Alternate #M2)” and “(3) Lower Play Yard Gate (Bid Alternate #M3)””; and all notes and references to these two additive alternates that have been deleted from the scope of work.

4. **Item No. AD1-4**
Reference: **DRAWING LM-2.0, SITE LEGEND**
Description: Revise the water line and shut off valve descriptions per AD1-SK1.
5. **Item No. AD1-5**
Reference: **DRAWING LM-3.0, DETAIL C**
Description: Revise the water line and shut off valve information per AD1-SK2.
6. **Item No. AD1-6**
Reference: **Drawing LM-3.2 Construction Details**
Description: Delete details (D) and (E)
7. **Item No. AD1-7**
Reference: **DRAWING LM-3.2, DETAIL G**
Description: Revise the shut off valve detail information per AD1-SK3.
8. **Item No. AD1-8**
Reference: **DRAWING LM-3.2, DETAIL H**
Description: Revise the pipe bedding and protection information per AD1-SK4.
9. **Item No. AD1-9**
Reference: **DRAWING LS-4.0, DETAIL I**
Description: Revise the hose bid supply pipe information per AD1-SK5.
10. **Item No. AD1-10**
Reference: **DRAWING LS-4.2, DETAIL C**
Description: Revise the pipe bedding and protection information per AD1-SK6

END OF ADDENDUM ITEMS

ATTACHMENTS:

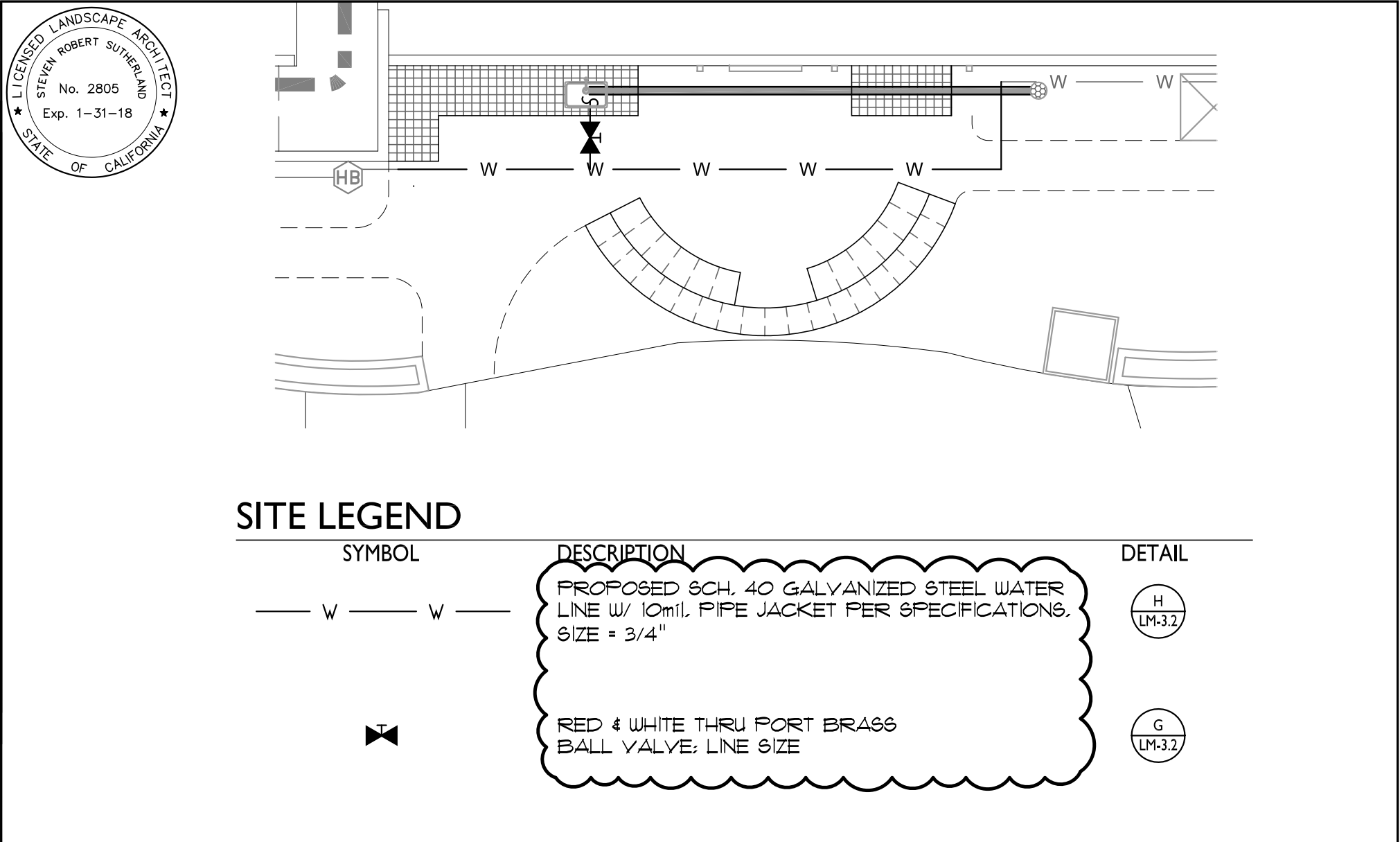
Drawings:

AD1-SK1 (LM-2.0)	1 Page
AD1-SK2 (C/LM-3.0)	1 Page
AD1-SK3 (G/LM-3.2)	1 Page
AD1-SK4 (H/LM-3.2)	1 Page
AD1-SK5 (I/LS-4.0)	1 Page
AD1-SK6 (C/LS-4.2)	1 Page



LANDSCAPE ARCHITECTS, INC.
 303 potrero street, suite 40-c
 santa cruz, ca 95060
 p: 831.459.0455

MIRALOMA & SUNNYSIDE ELEMENTARY SCHOOLS
 GREEN SCHOOLYARD PROJECT



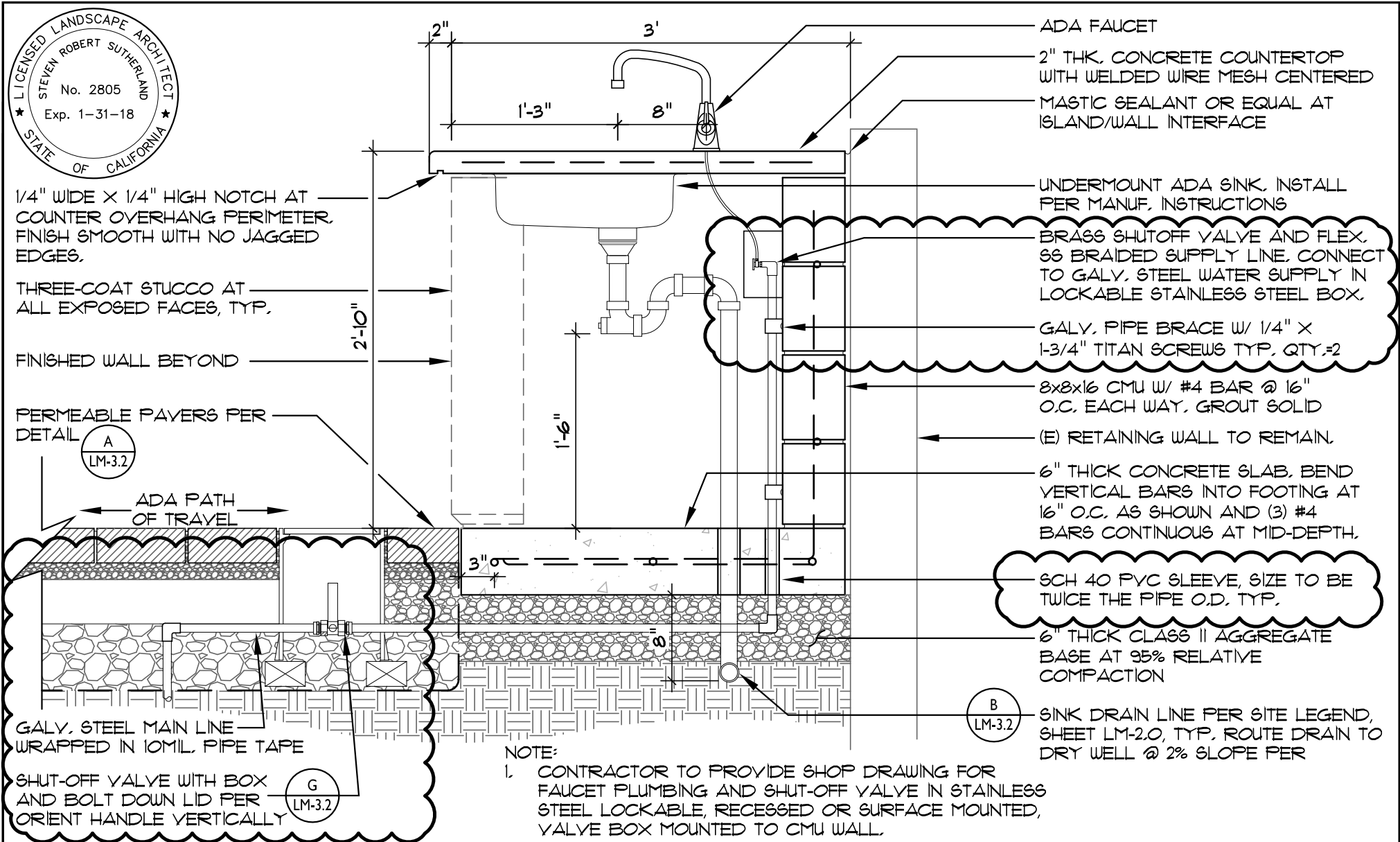
DRAWING TITLE: WATERLINE CLARIFICATION
 REFERENCE DRAWING: LM-2.0
 ISSUED VIA: ADDENDUM NO. 01
 SCALE: 1/8" = 1' - 0"

AD1-SK1



LANDSCAPE ARCHITECTS, INC.
 303 potrero street, suite 40-c
 santa cruz, ca 95060
 p: 831.459.0455

MIRALOMA & SUNNYSIDE ELEMENTARY SCHOOLS
 GREEN SCHOOLYARD PROJECT



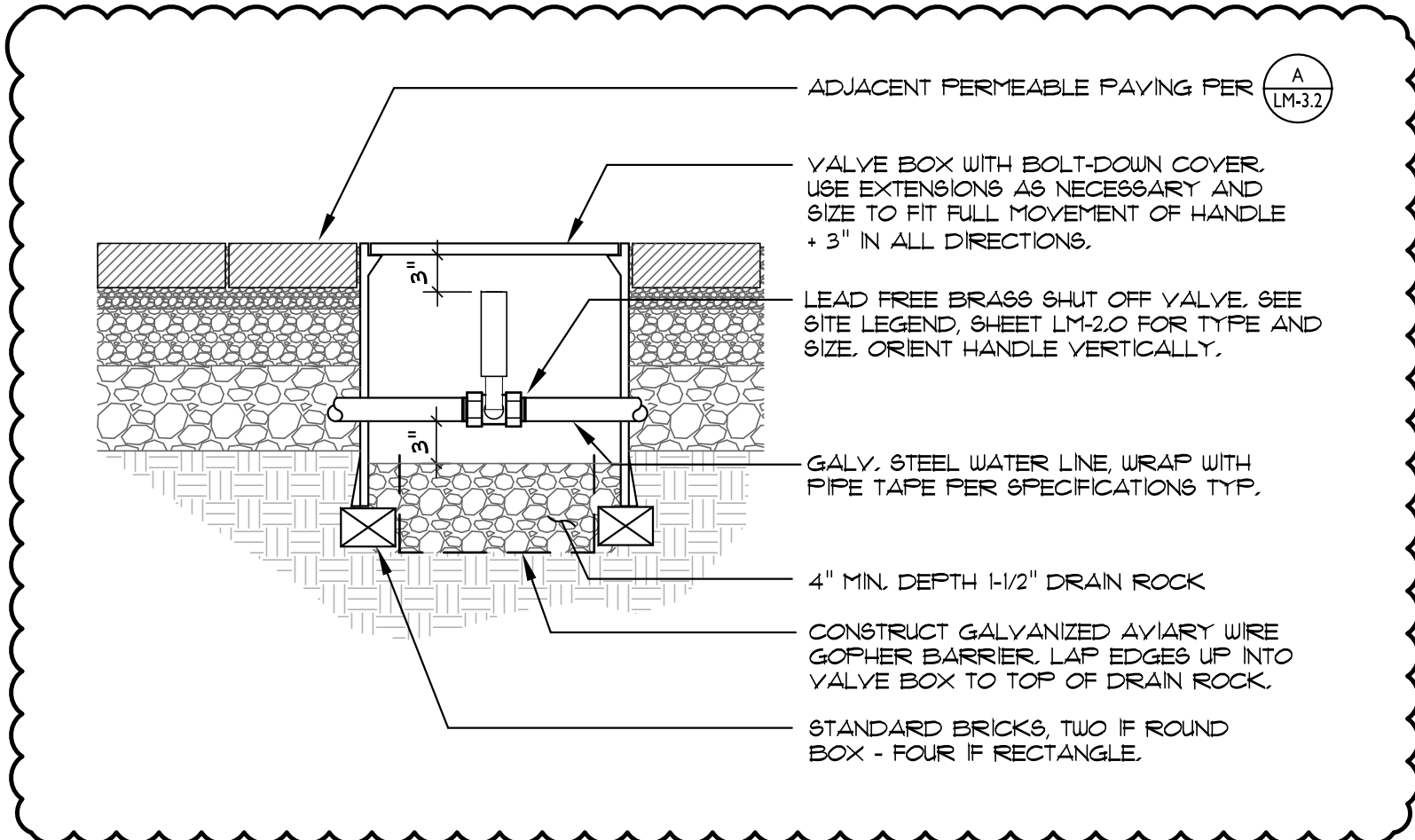
DRAWING TITLE: WATERLINE & SHUT OFF VALVE CLARIFICATION
 REFERENCE DRAWING: LM-3.0, EXCERPT OF DETAIL C
 ISSUED VIA: ADDENDUM NO. 01
 SCALE: 1" = 1' - 0"

AD1-SK2



LANDSCAPE ARCHITECTS, INC.
 303 potrero street, suite 40-c
 santa cruz, ca 95060
 p: 831.459.0455

MIRALOMA & SUNNYSIDE ELEMENTARY SCHOOLS
 GREEN SCHOOLYARD PROJECT



ADJACENT PERMEABLE PAVING PER



VALVE BOX WITH BOLT-DOWN COVER, USE EXTENSIONS AS NECESSARY AND SIZE TO FIT FULL MOVEMENT OF HANDLE + 3" IN ALL DIRECTIONS.

LEAD FREE BRASS SHUT OFF VALVE, SEE SITE LEGEND, SHEET LM-2.0 FOR TYPE AND SIZE. ORIENT HANDLE VERTICALLY.

GALV. STEEL WATER LINE, WRAP WITH PIPE TAPE PER SPECIFICATIONS TYP.

4" MIN. DEPTH 1-1/2" DRAIN ROCK

CONSTRUCT GALVANIZED AVIARY WIRE GOPHER BARRIER. LAP EDGES UP INTO VALVE BOX TO TOP OF DRAIN ROCK.

STANDARD BRICKS, TWO IF ROUND BOX - FOUR IF RECTANGLE.

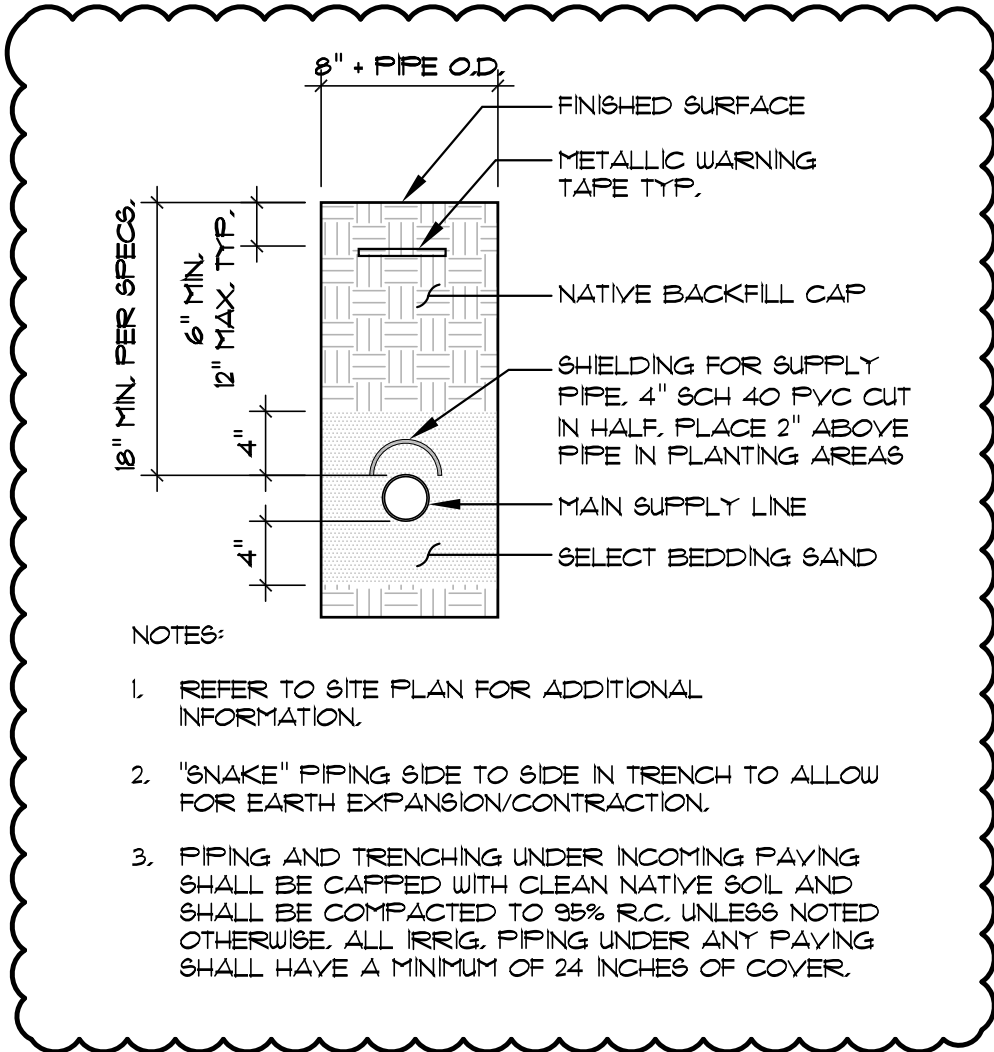


SHUT-OFF VALVE

SCALE: 1" = 1'-0"

DRAWING TITLE: SHUT OFF VALVE DETAIL CLARIFICATION
 REFERENCE DRAWING: LM-3.2, DETAIL G
 ISSUED VIA: ADDENDUM NO. 01
 SCALE: AS SHOWN

AD1-SK3



PIPE TRENCHING

SCALE: 1" = 1'-0"

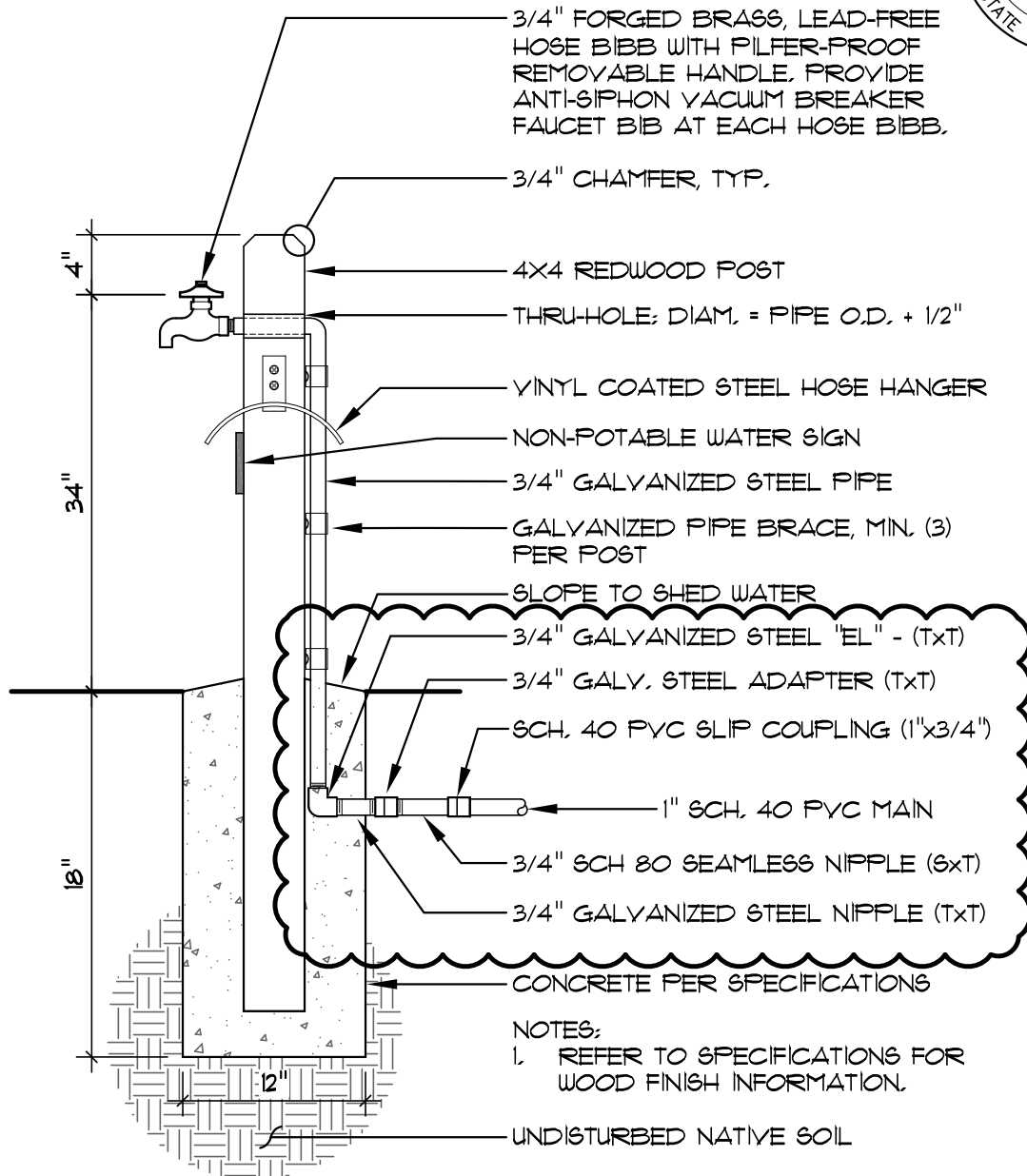
DRAWING TITLE: IRRIGATION PIPE BEDDING CLARIFICATION
 REFERENCE DRAWING: LM-3.2, DETAIL H
 ISSUED VIA: ADDENDUM NO. 01
 SCALE: AS SHOWN

AD1-SK4

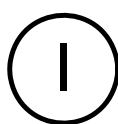


LANDSCAPE ARCHITECTS, INC.
 303 potrero street, suite 40-c
 santa cruz, ca 95060
 p: 831.459.0455

MIRALOMA & SUNNYSIDE ELEMENTARY SCHOOLS
 GREEN SCHOOLYARD PROJECT



NOTES:
 1. REFER TO SPECIFICATIONS FOR WOOD FINISH INFORMATION.

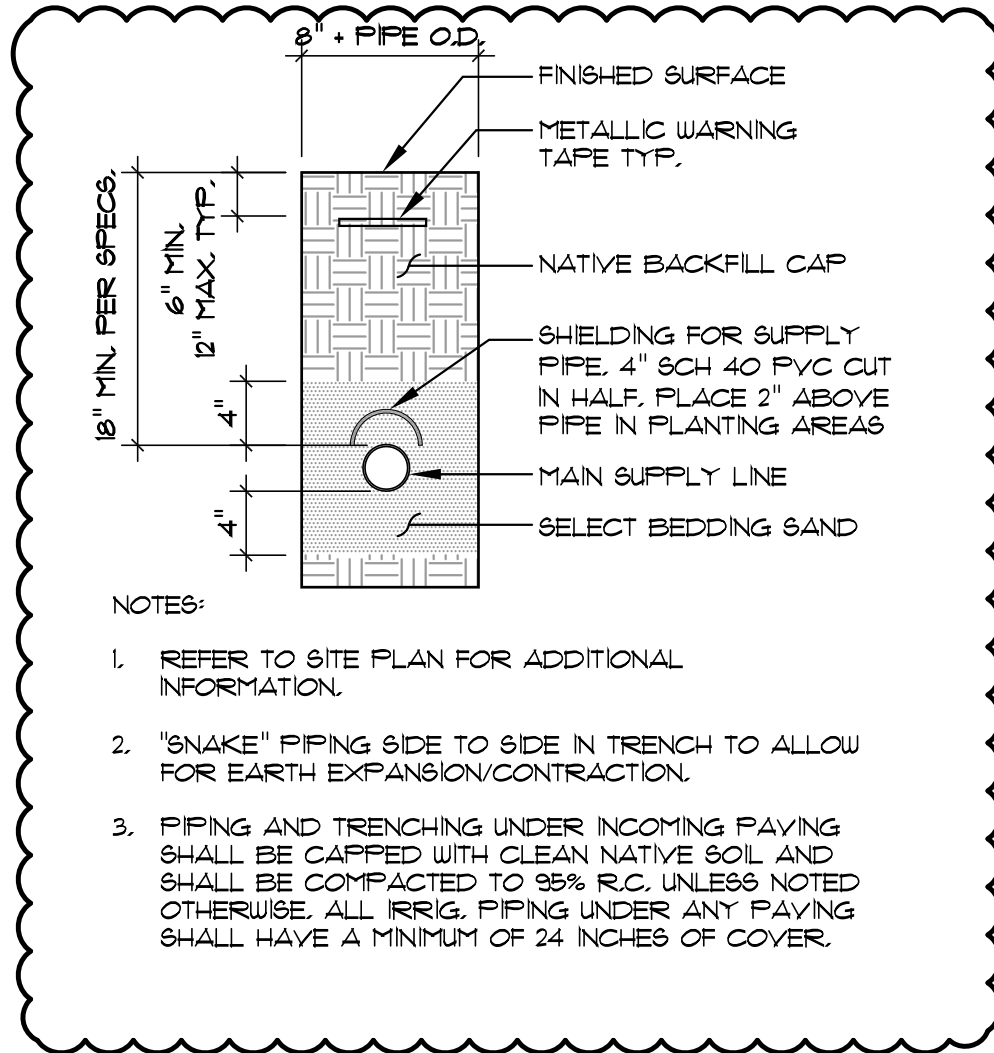


HOSE BIB (BID ALTERNATE #S1)

SCALE: 1" = 1'-0"

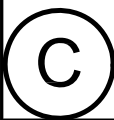
DRAWING TITLE: SUPPLY PIPE CLARIFICATION
 REFERENCE DRAWING: LS-4.0, EXCERPT OF DETAIL I
 ISSUED VIA: ADDENDUM NO. 01
 SCALE: AS SHOWN

AD1-SK5



NOTES:

1. REFER TO SITE PLAN FOR ADDITIONAL INFORMATION.
2. "SNAKE" PIPING SIDE TO SIDE IN TRENCH TO ALLOW FOR EARTH EXPANSION/CONTRACTION.
3. PIPING AND TRENCHING UNDER INCOMING PAVING SHALL BE CAPPED WITH CLEAN NATIVE SOIL AND SHALL BE COMPACTED TO 95% R.C. UNLESS NOTED OTHERWISE. ALL IRRIG. PIPING UNDER ANY PAVING SHALL HAVE A MINIMUM OF 24 INCHES OF COVER.



PIPE TRENCHING

SCALE: 1" = 1'-0"

DRAWING TITLE: SHUT OFF VALVE DETAIL CLARIFICATION
 REFERENCE DRAWING: LS-4.2, DETAIL C
 ISSUED VIA: ADDENDUM NO. 01
 SCALE: AS SHOWN

AD1-SK6