

**INFORMAL BID REQUEST  
FOR  
PLUMBING SERVICES  
SAN FRANCISCO UNIFIED SCHOOL DISTRICT  
PROP A 2003 BOND GREEN SCHOOLYARD PROGRAM**

---

**PROJECT SCOPE OF WORK AND LOCATIONS** *(REVISIONS IN RED ITALICS BELOW)*

1) International Studies Academy (formerly Bryant Elementary School), 1050 York Street, San Francisco, CA 94110

- The one (1) backflow prevention device at this site failed inspection as it is a Pressure Vacuum Breaker (PVB). In order to pass inspection, a Reduced Pressure (RP) backflow device needs to be installed to replace the PVB device in accordance with the current requirements outlined by the City and County of San Francisco, Department of Public Health Environmental Health's Cross Connection Control Program\* and in accordance to the San Francisco Unified School District Project Standard Guidelines. The backflow preventer enclosure ***should not need to be*** replaced to accommodate the new RP backflow assembly. See attachment for locations.

2) Leonard R. Flynn Elementary School, 3125 Cesar Chavez Street, San Francisco, CA 94110

- Replace the current three (3) anti-siphon valves with three (3) reduce pressure (RP) backflow device for the same reason noted above. See attachment for locations.

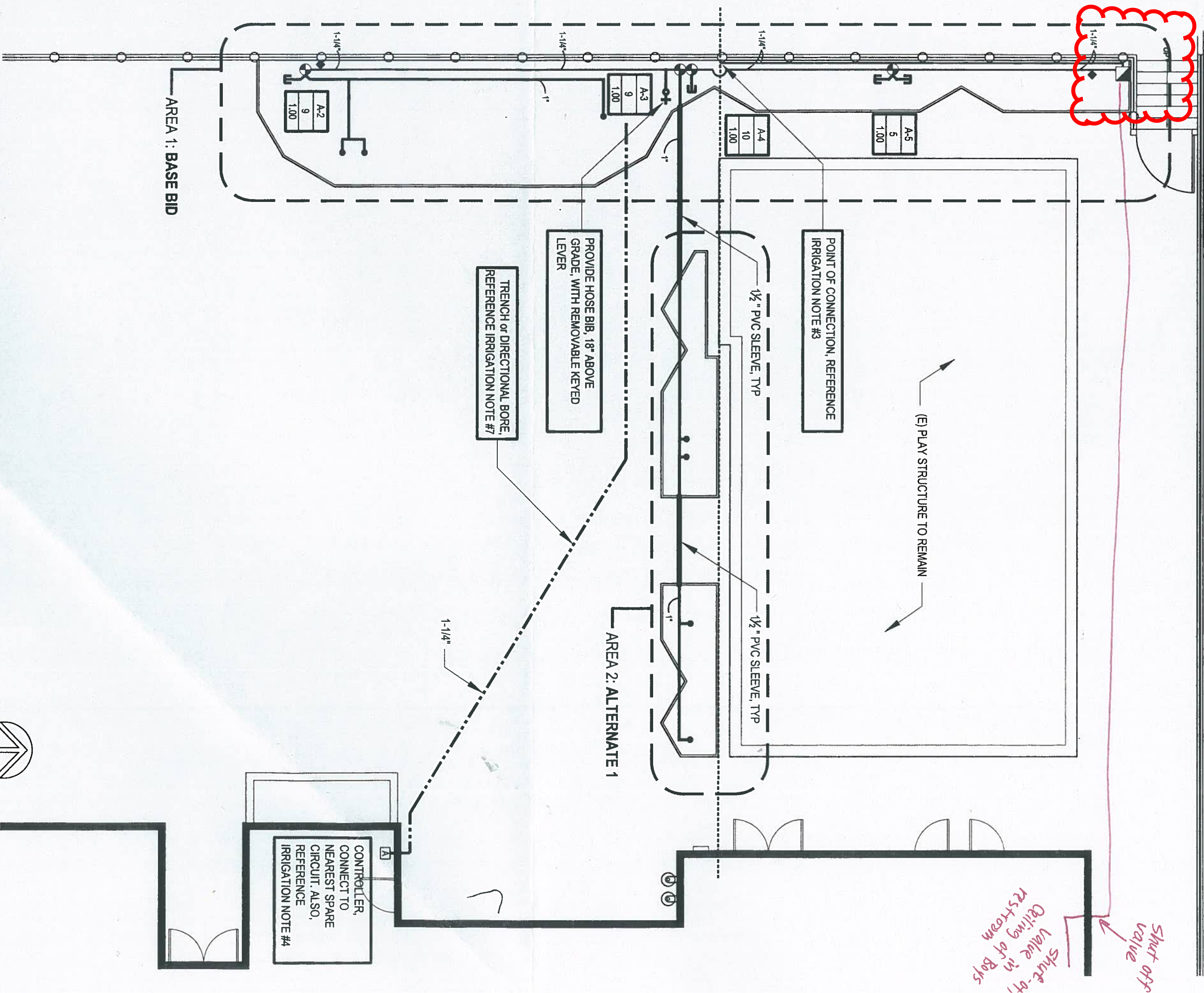
3) West Portal Elementary School, 5 Lenox Way, San Francisco, CA 94127

- On the west side of the campus, replace the ***one (1)*** current double check backflow preventer located in ground in a green Christi box with a reduce pressure (RP) backflow device for the same reason noted above ***on playground level 4. A new enclosure (same as Leonard Flynn ES) and a concrete pad will be required to bring above ground.***
- ***Also on the west side of the campus, replace the one (1) current double check backflow preventer located in ground in a green Christi box with a reduce pressure (RP) backflow device for the same reason noted above on playground level 3. A new enclosure (same as Leonard Flynn ES) and a concrete pad will be required to bring above ground.***
- On the east side of the campus, replace the ***one (1)*** current anti-siphon valve located in a green Christi box with a reduce pressure (RP) backflow device for the same reason noted above. ***The new backflow device will need to be secured therefore the enclosure will need to be corrected.***
- See attachment for locations.

**GENERAL NOTES:**

Note \*: Backflow Prevention assemblies must pass inspection per the City and County of San Francisco Department of Public Health Environmental Health's Cross Connection Control Program. Requirements can be viewed at: <http://www.sfdph.org/dph/EH/CrossFlow/CrossConnCodes.asp>.

2-STORY FRAME HOUSE



*Shut-off valve in Restroom of Boys*

*Shut-off valve*

CONTROLLER, CONNECT TO NEAREST SPARE CIRCUIT. ALSO, REFERENCE IRRIGATION NOTE #4

TRENCH or DIRECTIONAL BORE, REFERENCE IRRIGATION NOTE #7

PROVIDE HOSE BIB, 18" ABOVE GRADE, WITH REMOVABLE KEYED LEVER

POINT OF CONNECTION, REFERENCE IRRIGATION NOTE #3

(E) PLAY STRUCTURE TO REMAIN

AREA 1: BASE BID

AREA 2: ALTERNATE 1



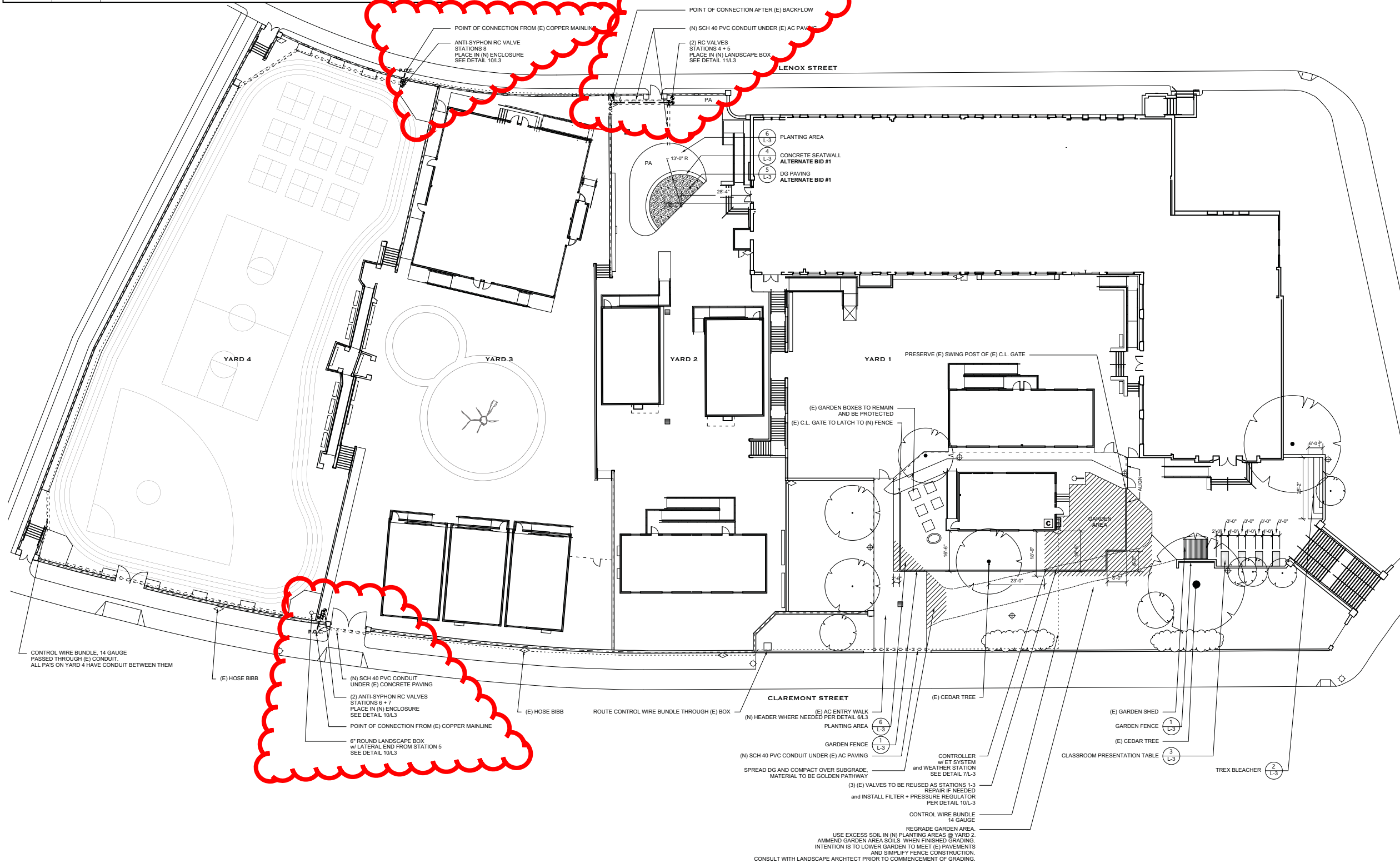
**Gelfand Partners**  
ARCHITECTS

**GP**  
450 Geary Street, Suite 100  
San Francisco, CA 94102  
Tel. 415. 346. 4040  
Fax 415. 346. 4103  
www.gelfand-partners.com

**GREENING - Irrigation Plan**

**BRYANT ELEMENTARY SCHOOL**  
San Francisco, CA 07-12-06  
**A.03**

SYMBOL	MODEL	DESCRIPTION
	N/A	EXISTING REDUCED PRESSURE BACKFLOW PREVENTER
	N/A	EXISTING HOSEBIBB
	HUNTER PRO-C	9 STATION IRRIGATION CONTROLLER w/ ET SYSTEM and WEATHER STATION
		14 GAUGE CONTROLLER WIRE
		SLEEVE: SCH 40 PVC PLASTIC PIPE 4" DIAMETER
<b>P.O.C.</b>		POINT OF CONNECTION.
		1" MAINLINE, SCH 40 PVC WITH SOLVENT WELD SCH 40 PVC FITTINGS
		1" GATE VALVE IN 6" ROUND LANDSCAPE BOX
	IRRITROL ASVF-3/4"	ANTI-SYPHON RC VALVE w/ PRESSURE REDUCER & FILTER ASSEMBLY. IN ENCLOSURE (SEE DETAIL 10/L3)
	N/A	(E) ANTI-SYPHON VALVE TO BE REUSED
	RAINBIRD DV-3/4"	RC VALVE w/ PRESSURE REDUCER & FILTER ASSEMBLY. IN LANDSCAPE BOX (SEE DETAIL 11/L3)
		3/4" LATERAL, SCH 40 PVC WITH SOLVENT WELD SCH 40 PVC FITTINGS



**FACILITIES DEVELOPMENT & MANAGEMENT**

135 Van Ness Avenue  
San Francisco, California 94102  
TEL. (415) 355-6937  
FAX (415) 355-6964

School Name and Address:  
**WEST PORTAL  
5 LENOX WAY  
SAN FRANCISCO, CA**

Date	No.	Revisions

Project Name:  
**WEST PORTAL  
ELEMENTARY  
GREEN  
SCHOOLYARD**

Firm Name and Address And Logo

**MILLER COMPANY**  
LANDSCAPE ARCHITECTS

1585 FOLOSOM STREET  
SAN FRANCISCO, CA 94103  
415-252-7288  
FAX: 415-252-7289  
www.millercomp.com  
Lic# 2031

FIRMS PROJECT NO. 0710

IDENTIFICATION STAMP  
DIV. OF THE STATE ARCHITECT

AC \_\_\_\_\_ FLS \_\_\_\_\_ SS \_\_\_\_\_

DATE \_\_\_\_\_

DRAWING TITLE

**PROJECT PLAN**

SHEET NO. \_\_\_\_\_ DISCIPLINE/FLOOR NO. \_\_\_\_\_

**L 2.1**

2 OF 3 SHEETS

DATE: 10-2-07 DRAFTER: amp CAD FILE: SITE NO.: 823

SCALE: 1/16" = 1'-0" S.F.U.S.D. PROJECT NO.: 10786-O