



Integrated Writing Assessment Helpful Information for Families

What is the Integrated Writing Assessment?

The **Integrated Writing Assessment (IWA)** is an assessment that measures student performance in writing.

Why?

In SFUSD, we believe that students should have opportunities to read, discuss their reading, and plan to write using evidence to support their ideas. The IWA assesses the **Common Core State Standards** for writing and is similar in design to the writing tasks on the new Smarter Balanced Assessments.

Who takes it?

In SFUSD, all 3rd, 6th and 9th grade students take the IWA.

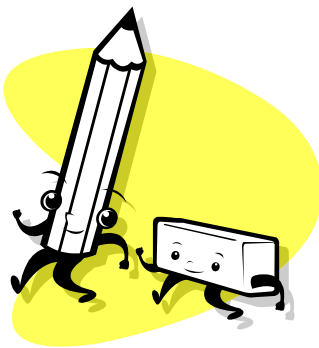
When?

In the 2015-2016 school year, SFUSD teachers will give the IWA to all 3rd, 6th and 9th students during the week of **February 9 – February 19**.

How do teachers use IWA results?

Students receive an overall score (1-6) for their writing. They also receive sub scores (1-6) for each area of their writing. Results of the Integrated Writing Assessment help teachers to:

- Identify area of strengths and needs in a student's writing
- Plan instruction that meets the individual needs of all students
- Group students for writing instruction
- Develop writing goals with students



Things you can do!

- Discuss your child's strengths and challenges in writing with his or her teacher.
- Ask your child's teacher to explain grade-level expectations for writing.
- Ask your child's teacher what types of support or enrichment he or she offers students.
- Encourage your child to write at least 20-30 minutes each day.
- Ask your child to read his or her writing out loud to you.