



## Integrated Writing Assessment Helpful Information for Families

### What is the Integrated Writing Assessment?

The **Integrated Writing Assessment (IWA)** is an assessment that measures student performance in writing.

### Why?

In SFUSD, we believe that students should have opportunities to read, discuss their reading, and plan to write using evidence to support their ideas. The IWA assesses the **Common Core State Standards** for writing and is similar in design to the writing tasks on the Smarter Balanced Assessments.

### Who takes it?

In SFUSD, all 3<sup>rd</sup>, 6<sup>th</sup> and 9<sup>th</sup> grade students take the IWA.

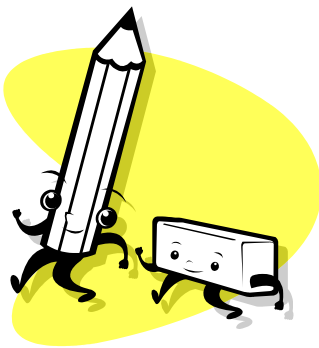
### When?

In the 2016-2017 school year, SFUSD teachers will give the IWA to all 3<sup>rd</sup> students during the month of January.

### How do teachers use IWA results?

Students receive an overall score (1-6) for their writing. They also receive sub scores (1-6) for each area of their writing. Results of the Integrated Writing Assessment help teachers to:

- Identify area of strengths and needs in a student's writing
- Plan instruction that meets the individual needs of all students
- Group students for writing instruction
- Develop writing goals with students



## Things you can do!

- Discuss your child's strengths and challenges in writing with his or her teacher.
- Ask your child's teacher to explain grade-level expectations for writing.
- Ask your child's teacher what types of support or enrichment he or she offers students.
- Encourage your child to write at least 20-30 minutes each day.
- Ask your child to read his or her writing out loud to you.