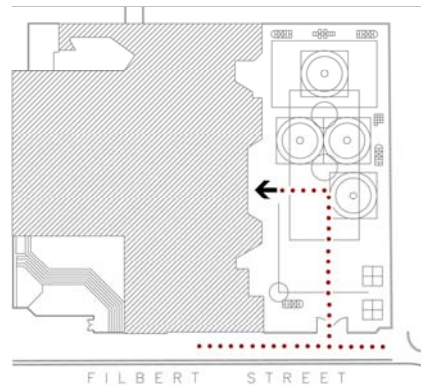










Garfield CDC

420 Filbert Street
San Francisco, CA 94133
Tel: (415) 291-7924



Site Plan

● Accessible ◆ Functionally accessible

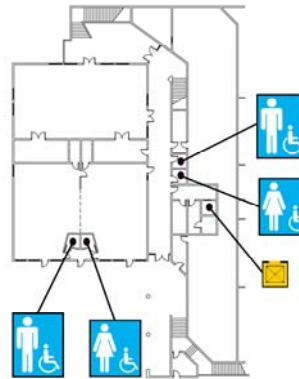
Accessibility		Location	Condition
◆◆◆◆	Access path of travel	From Filbert Street through upper yard on third level	●
	Accessible parking stall	None	
	Passenger loading zone	None	
	Accessible entrance	From upper yard on third level	●
	Ramp	None	
	Boys' toilet, Girls' toilet, Unisex restroom	See other plans for locations	
	Drinking fountain	See other plans for locations	
	Elevator	See other plans for locations	
	TTY (text telephone)	None	

School Access Description

Accessibility/Entrance: ● Main entrance on Filbert Street is not accessible.

**Garfield
 CDC**

420 Filbert Street
 San Francisco, CA 94133
 Tel: (415) 291-7924



First Floor Plan

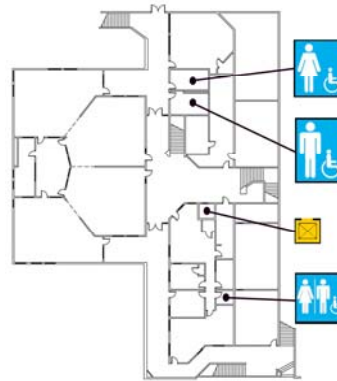
• Accessible ♦ Functionally accessible

Accessibility	Location	Condition
Access path of travel	From lobby to corridors	•
Accessible parking stall	Not applicable	
Passenger loading zone	Not applicable	
Accessible entrance	Not applicable	
Ramp	Not applicable	
Boys' toilet, Girls' toilet, Unisex restroom	Staff restrooms at middle of corridor Student restrooms next to CDC classrooms	•
Drinking fountain	None on this floor	
Elevator	Elevator entrance is on the third level. Elevator is located at lobby serves all floors	•
TTY (text telephone)	None	

School Access Description

**Garfield
 CDC**

420 Filbert Street
 San Francisco, CA 94133
 Tel: (415) 291-7924



Second Floor Plan

● Accessible ◆ Functionally accessible

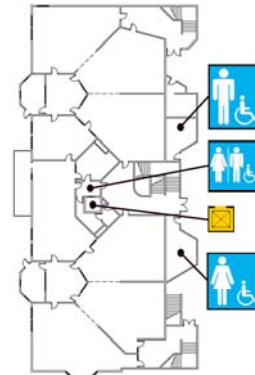
Accessibility		Location	Condition
	Access path of travel	Not applicable	●
	Accessible parking stall	Not applicable	
	Passenger loading zone	Not applicable	
	Accessible entrance	Not applicable	
	Ramp	Not applicable	
	Boys' toilet, Girls' toilet, Unisex restroom	Not applicable	●
	Drinking fountain	Not applicable	
	Elevator	Elevator entrance is on the third level. Elevator is located at lobby serves all floors	●
	TTY (text telephone)	None	

School Access Description

Accessibility/Entrance: ● This floor is not occupied by Child Development Center.










**Garfield
 CDC**

420 Filbert Street
 San Francisco, CA 94133
 Tel: (415) 291-7924



Third Floor Plan

• Accessible ♦ Functionally accessible

Accessibility	Location	Condition
 Access path of travel	From upper yard entrance through lobby and classrooms	•
 Accessible parking stall	Not applicable	
 Passenger loading zone	Not applicable	
 Accessible entrance	From upper yard	•
 Ramp	Not applicable	
 Boys' toilet, Girls' toilet, Unisex restroom	Student restrooms at both sides of middle stair accessible from upper yard Unisex restroom at lobby	•
 Drinking fountain	See description below	
 Elevator	Elevator entrance is on this floor. Elevator is located at lobby serves all floors	•
 TTY (text telephone)	None	

School Access Description

Drinking fountains: • Exterior drinking fountains located at upper yard are not accessible.