



Argonne Elementary School

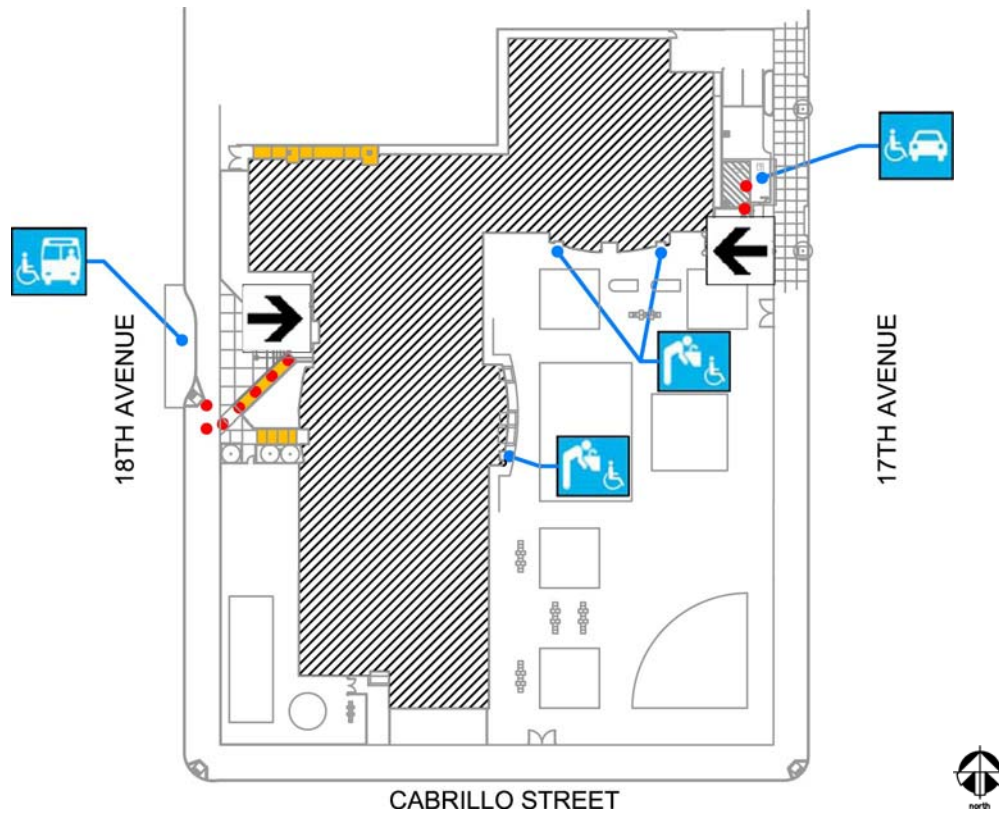
680 18th Avenue
 San Francisco, CA 94121
[Map](#) [Public transit](#)
 Tel: (415)750-8460
 Fax: (415)750-8462

ALTERNATE
 FORMAT:






中文

Español

Large Print



Site Plan

Accessibility		Location
.....	Access path of travel	From 16th Avenue, down ramp to front entrance. Secondary entrance is from 17th Ave. from the accessible parking space.
	Accessible parking space	One accessible parking space off of 17th Ave.
	Accessible passenger loading zone	On 18th Ave, front of school.
	Accessible entrance	On 18th Ave, front of school. Secondary entrance is from 17th Ave. from the accessible parking space.
	Ramp	3 ramps off of 18th Ave.
	Drinking fountain	3 hi/low exterior drinking fountains in school area.



Argonne Elementary School

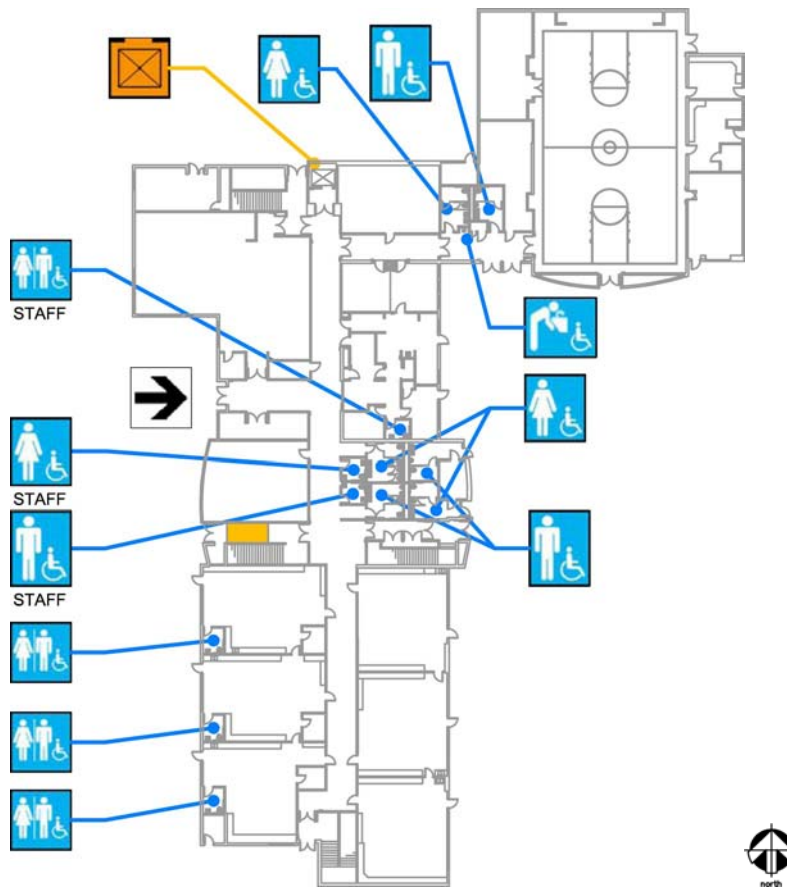
680 18th Avenue
San Francisco, CA 94121
[Map](#) [Public transit](#)
Tel: (415)750-8460
Fax: (415)750-8462

ALTERNATE
FORMAT:





中文

Español

Large Print



First Floor Plan

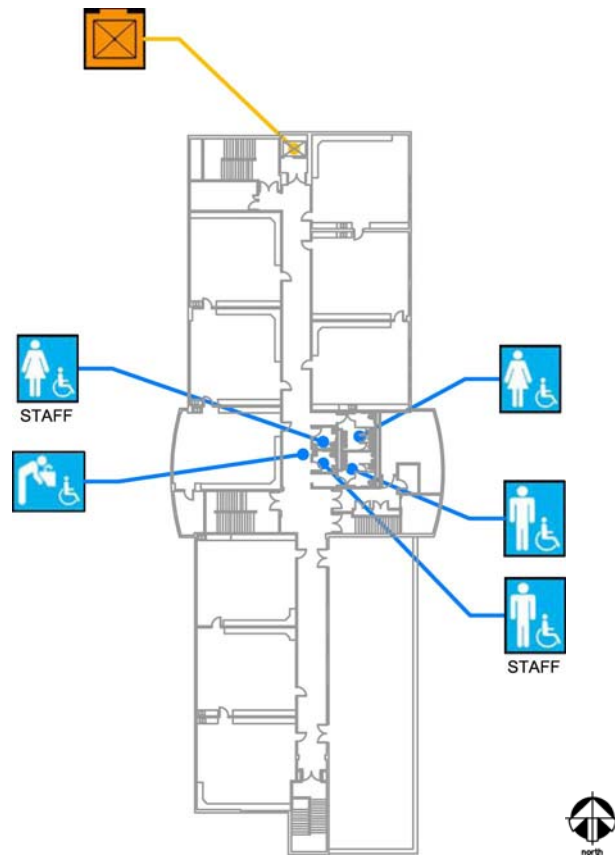
Accessibility		Location
	Accessible entrance	On 18th Ave, front of school. Secondary entrance is from 17th Ave. from the accessible parking space.
	Men's, Women's, Unisex restroom	Student restrooms along corridor by center stairs and gym. Unisex student restrooms in kindergarten classrooms. Staff restrooms along corridor by center stairs.
	Drinking fountain	In corridor by gym.
	Elevator	North end of corridor.






Argonne Elementary School

680 18th Avenue
San Francisco, CA 94121
[Map](#) [Public transit](#)
Tel: (415)750-8460
Fax: (415)750-8462

ALTERNATE FORMAT:
中文
Español
Large Print



Second Floor Plan

Accessibility		Location
	Men's, Women's, Unisex restroom	Student and staff restrooms at center of building, along corridor
	Drinking fountain	Center of building, along corridor, in front of restrooms
	Elevator	North end of corridor.



Argonne Elementary School

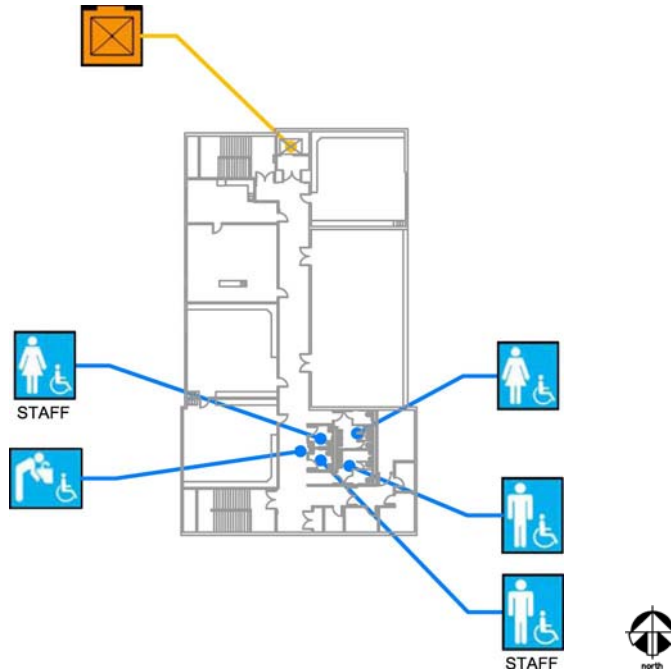
680 18th Avenue
San Francisco, CA 94121
[Map](#) [Public transit](#)
Tel: (415)750-8460
Fax: (415)750-8462

ALTERNATE
FORMAT:




中文

Español

Large Print



Third Floor Plan

Accessibility		Location
	Men's, Women's, Unisex restroom	Student and staff restrooms at south end of building.
	Drinking fountain	Along corridor, in front of restrooms.
	Elevator	North end of corridor.



Argonne Elementary School

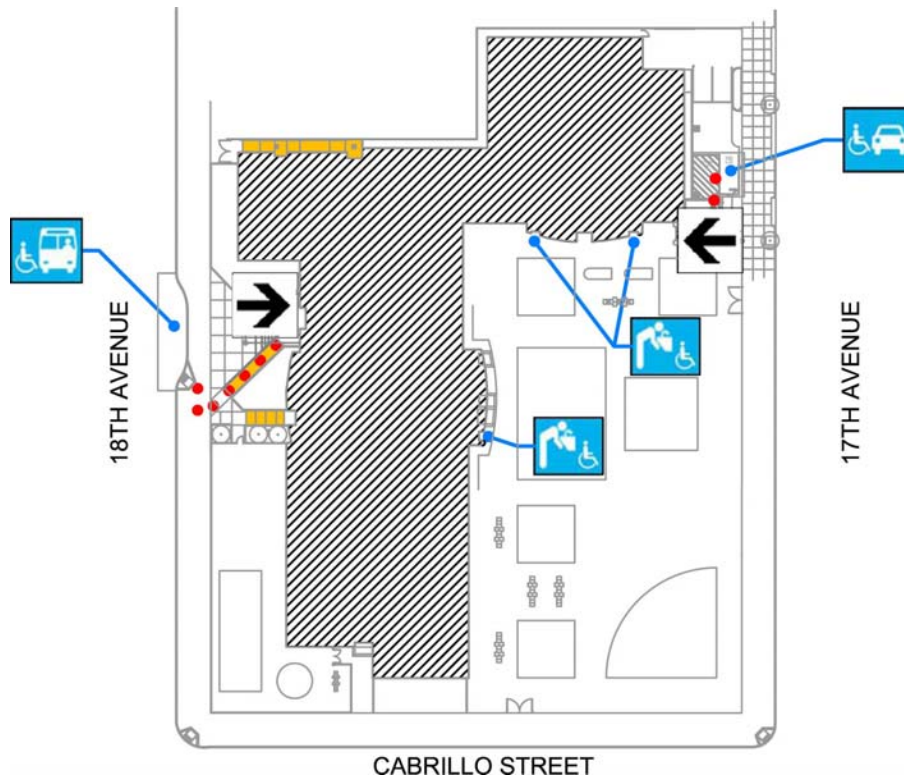
680 18th Avenue
 San Francisco, CA 94121
[Map](#) [Public transit](#)
 Tel: (415)750-8460
 Fax: (415)750-8462

ALTERNATE
 FORMAT:

中文

Español

Large Print



校舍平面圖

殘障人士專用設施		位置
.....	專用通道	位於 16 街(16th Ave), 沿輪椅坡道前往正門。輔助入口位於 17 街(17th Ave)(經由殘障人士專用車位)。
	專用車位	一個專用車位位於 17 街。
	殘障人士上落專區	位於 18 街(18th Ave)學校前。
	專用入口	設於 18 街(18th Ave)正門。另設輔助入口於 17 街(經殘障人士專用車位)。
	輪椅坡道	三條輪椅坡道設於 18 街。
	飲水器	校園內設有三台室外高/低飲水器。



Argonne Elementary School

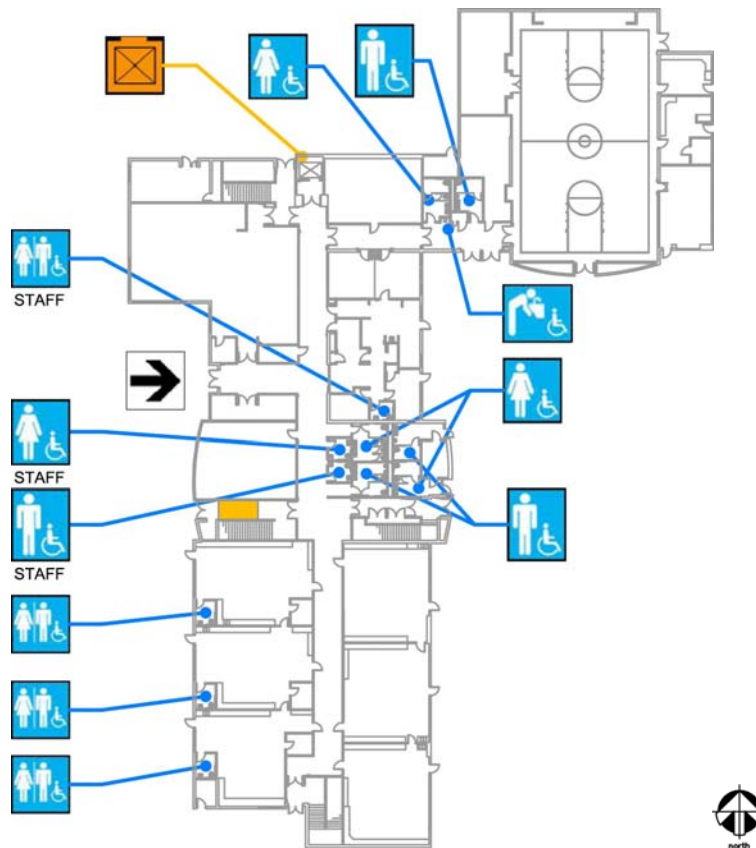
680 18th Avenue
San Francisco, CA 94121
[Map](#) [Public transit](#)
Tel: (415)750-8460
Fax: (415)750-8462

ALTERNATE
FORMAT:





中文

Español

Large Print



一樓平面圖

殘障人士專用設施		位置
	專用入口	設於 18 街(18th Ave)正門。另輔助入口設於 17 街(經殘障人士專用車位)。
	教職員及殘障人士 專用洗手間	學生洗手間設於中間樓梯旁走廊和體育館旁。殘障人士專用洗手間設於幼稚園課室內。教職員洗手間設於走廊(中間樓梯旁)。
	飲水器	設於走廊(體育館旁)。
	專用升降機	設於走廊北端。



Argonne Elementary School

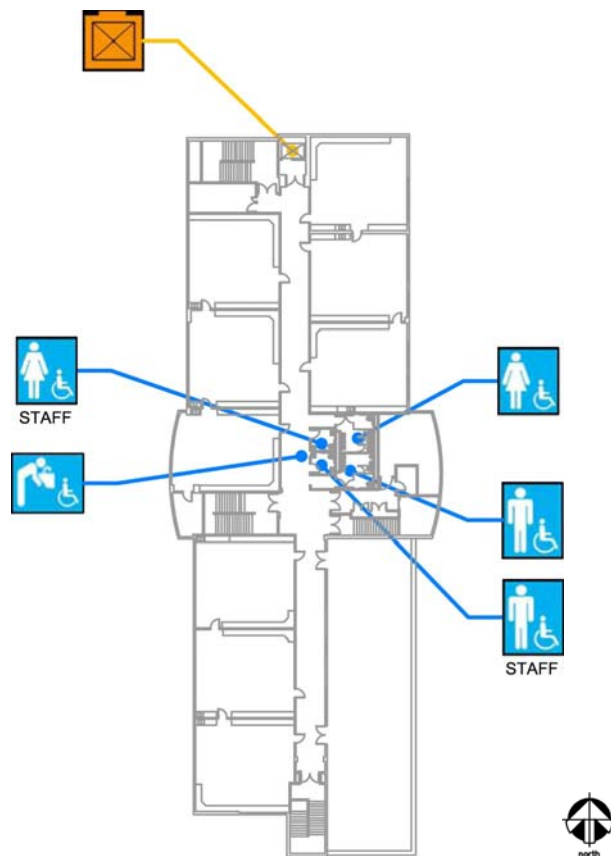
680 18th Avenue
San Francisco, CA 94121
[Map](#) [Public transit](#)
Tel: (415)750-8460
Fax: (415)750-8462

ALTERNATE
FORMAT:




中文

Español

Large Print



二樓平面圖

殘障人士專用設施		位置
	教職員及殘障人士專用洗手間	學生及教職員洗手間設於走廊(校舍中部)。
	飲水器	沿走廊(校舍中部)，洗手間前面。
	專用升降機	設於走廊北端。



Argonne Elementary School

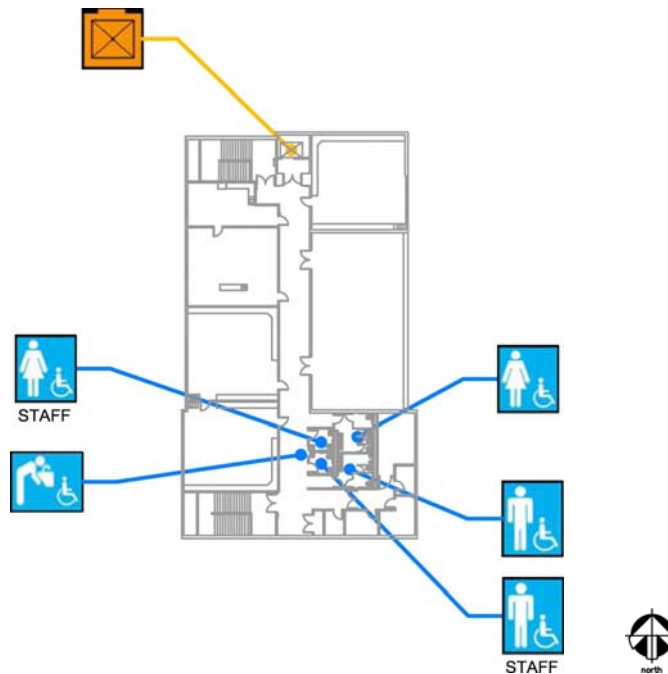
680 18th Avenue
San Francisco, CA 94121
[Map](#) [Public transit](#)
Tel: (415)750-8460
Fax: (415)750-8462

ALTERNATE
FORMAT:




中文

Español

Large Print



三樓平面圖

殘障人士專用設施		位置
	教職員及殘障人士 專用洗手間	學生及教職員洗手間設於校舍南端。
	飲水器	沿走廊，洗手間前面。
	專用升降機	設於走廊北端。



Argonne Elementary School

680 18th Avenue
San Francisco, CA 94121

[Map](#) (mapa) [Public transit](#) (Transporte público)

Tel: (415)750-8460

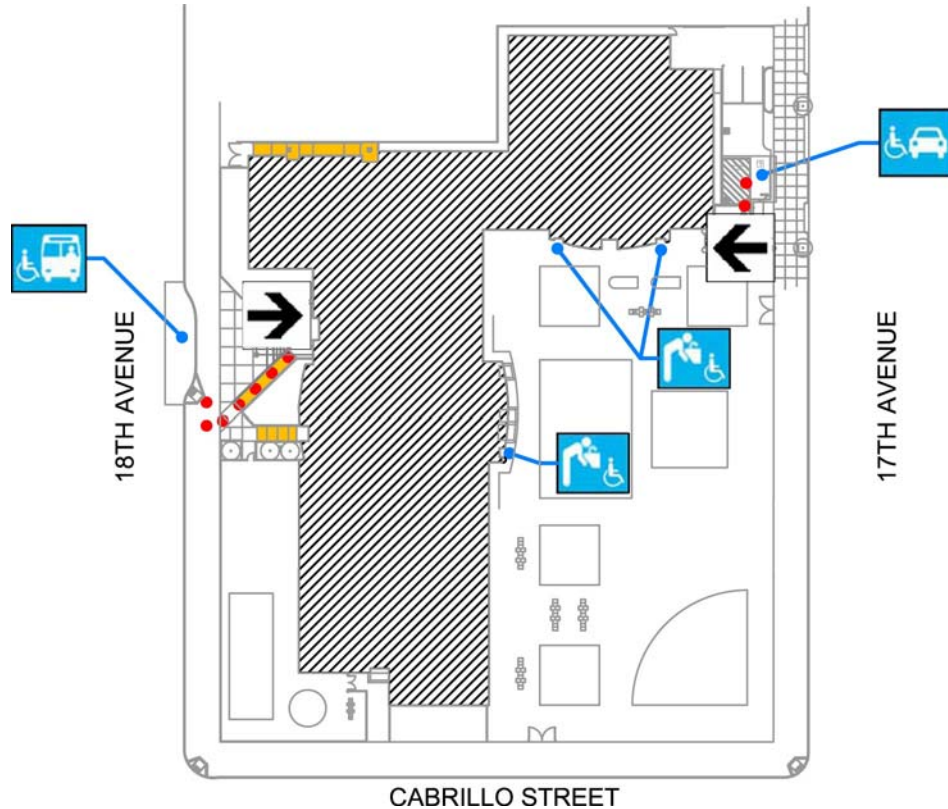
Fax: (415)750-8462

ALTERNATE
FORMAT:







中文

Español

Large Print



Plano de las instalaciones

Accesibilidad		Ubicación
	Acceso peatonal	En la avenida 18, por la rampa, hacia la entrada principal. La segunda entrada es en la avenida 17, por el espacio de acceso para estacionamiento.
	Espacio accesible para estacionamiento	Un espacio accesible para estacionamiento en la avenida 17.
	Zona de acceso para pasajeros	En la avenida 18, enfrente a la escuela.
	Entradas de acceso	En la avenida 18, enfrente a la escuela. La segunda entrada es en la avenida 17, por el espacio de acceso para estacionamiento.
	Rampa	3 rampas por la avenida 18.
	Bebedero	3 bebederos de alturas diferentes, por el área externa de la escuela.



Argonne Elementary School

680 18th Avenue
San Francisco, CA 94121

[Map](#) (mapa) [Public transit](#) (Transporte público)

Tel: (415)750-8460

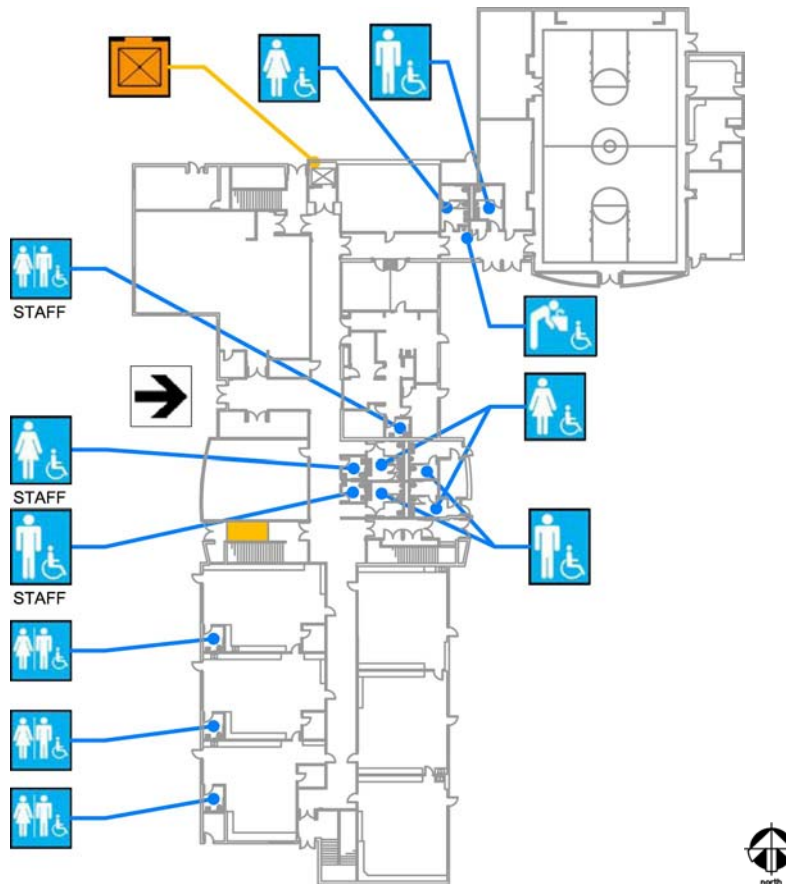
Fax: (415)750-8462

ALTERNATE
FORMAT:





中文

Español

Large Print



Plano del primer piso

Accesibilidad		Ubicación
	Entradas de acceso	Por la avenida 18, enfrente a la escuela. La segunda entrada es en la avenida 17, por el espacio de acceso para estacionamiento.
	Baños para hombres y mujeres, y de uso común.	Para estudiantes a lo largo del corredor, por las escaleras centrales y el gimnasio. Baños de uso común, en los salones de kindergarten. Par empleados, por el corredor, en las escaleras centrales.
	Bebedero	En el corredor por el gimnasio.
	Elevador	En el lado norte del corredor.



Argonne Elementary School

680 18th Avenue
San Francisco, CA 94121

[Map](#) (mapa) [Public transit](#) (Transporte público)

Tel: (415)750-8460

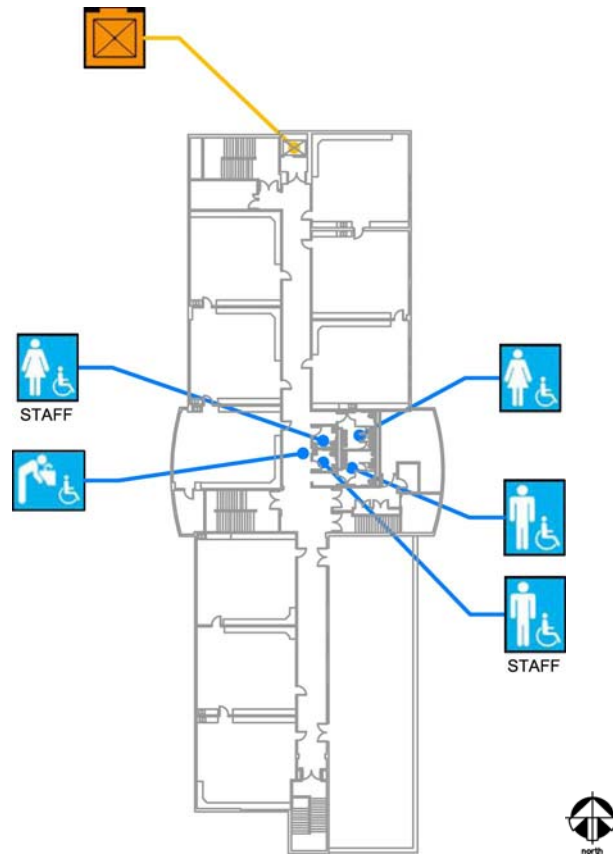
Fax: (415)750-8462

ALTERNATE
FORMAT:




中文

Español

Large Print



Plano del segundo piso.

Accesibilidad		Ubicación
	Baños para hombres y mujeres, y de uso común.	Baños para los estudiantes y el personal, en el centro del edificio, por el corredor.
	Bebedero	En el centro del edificio, por el corredor enfrente de los baños.
	Elevador	En el lado norte, al final del corredor.



Argonne Elementary School

680 18th Avenue
San Francisco, CA 94121

[Map](#) (mapa) [Public transit](#) (Transporte público)

Tel: (415)750-8460

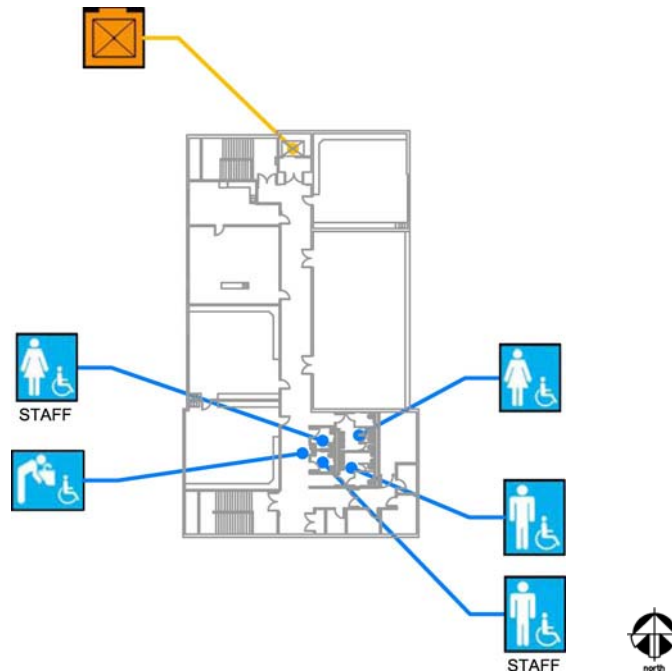
Fax: (415)750-8462

ALTERNATE
FORMAT:




中文

Español

Large Print



Plano del tercer piso

Accesibilidad		Ubicación
	Baños para hombres y mujeres, y de uso común.	Baños para estudiantes y empleados, en el lado sur al final del edificio.
	Bebedero	En el corredor, enfrente a los baños.
	Elevador	En el lado norte, al final del corredor.