

Buena Vista Elementary School

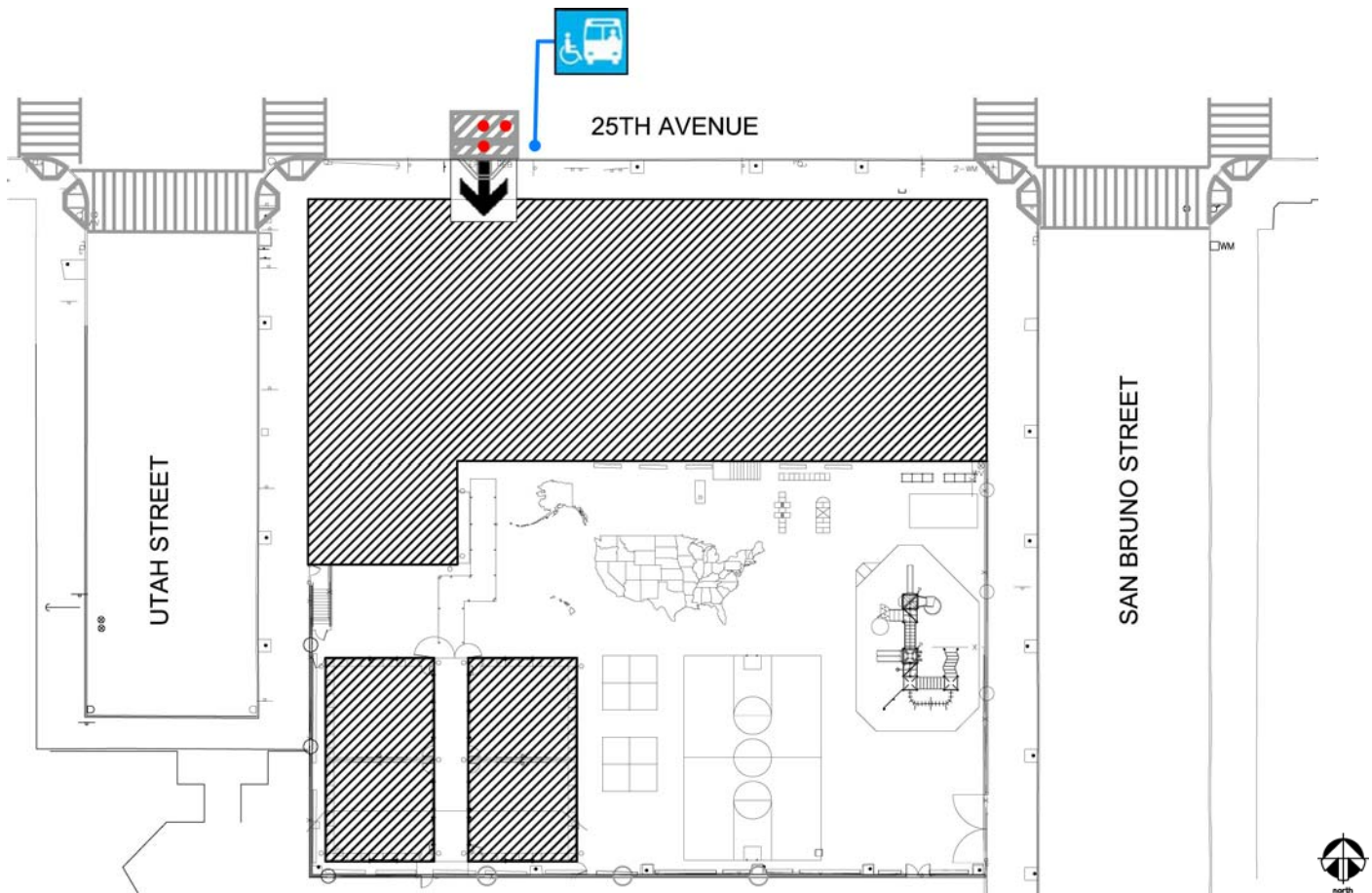
2641 25th Avenue
 San Francisco, CA 94110
[Map](#) [Public transit](#)
 Tel: (415) 695-5875
 Fax: (415) 695-5311

ALTERNATE
 FORMAT:




中語

Español

Large Print



Site Plan

Accessibility		Location
	Access path of travel	From 25 th Avenue to northwest side of building.
	Accessible passenger loading zone	On 25 th Avenue.
	Accessible entrance	On 25 th Avenue, northwest side of building.

Buena Vista Elementary School

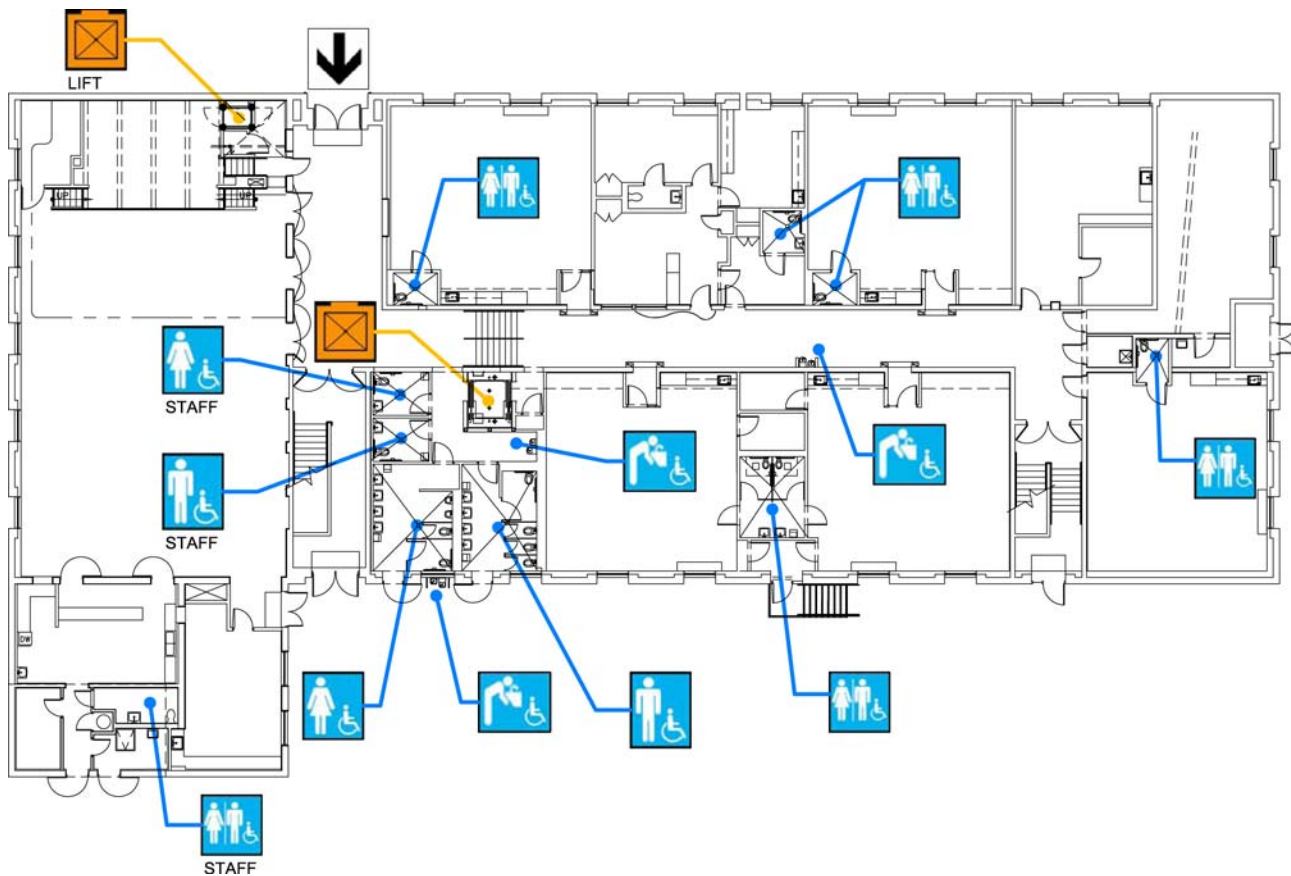
2641 25th Avenue
San Francisco, CA 94110
[Map](#) [Public transit](#)
Tel: (415) 695-5875
Fax: (415) 695-5311

ALTERNATE
FORMAT:





中語

Español

Large Print



First Floor Plan

Accessibility		Location
	Accessible entrance	Northwest side of building.
	Boy's, Girl's, & Unisex restroom	Student and staff restrooms at center of building, across from elevator. Unisex student restrooms in kindergarten classrooms. Unisex staff restroom in kitchen area.
	Drinking fountain	One along classroom corridor; one in elevator/restrooms vestibule; and one on exterior of south wall, between student restrooms.
	Elevator	Elevator in vestibule next to stairs in corridor, across from staff restrooms. Wheelchair lift provided for platform access in multipurpose room.

Buena Vista Elementary School

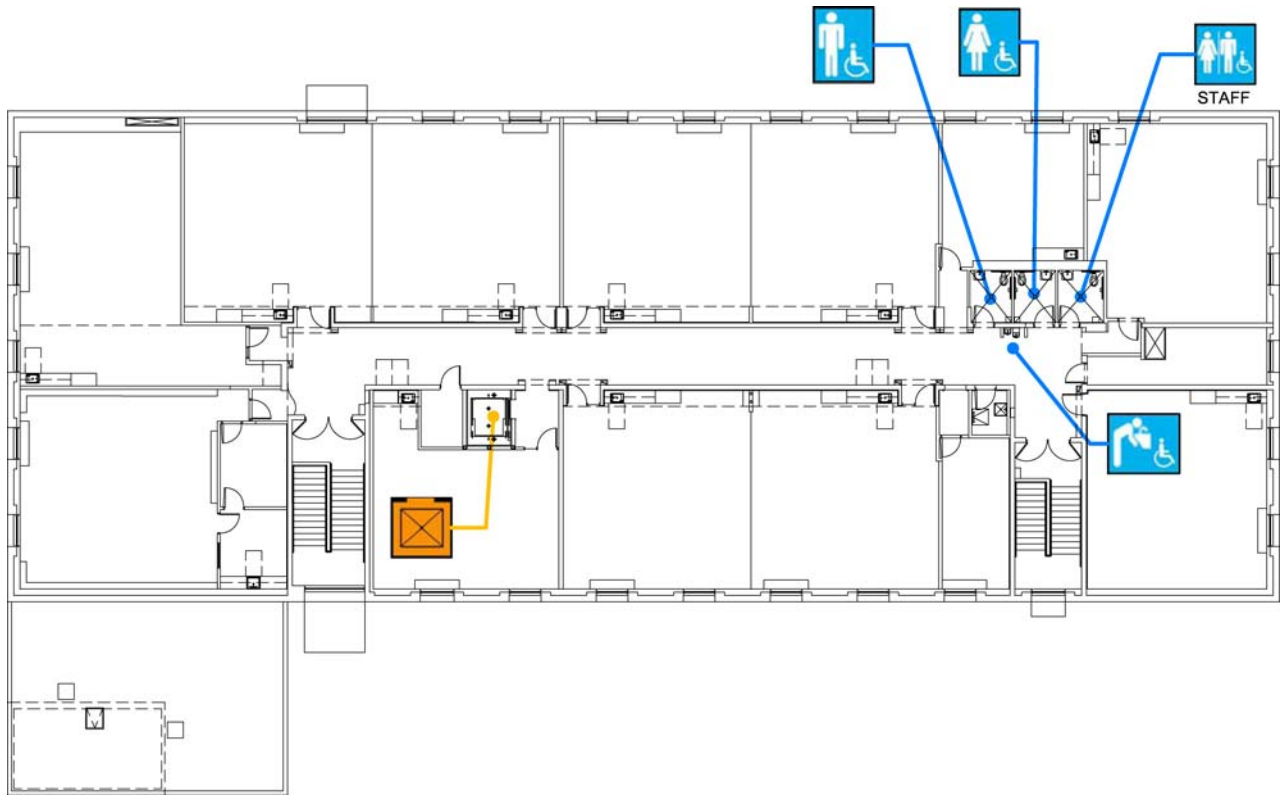
2641 25th Avenue
San Francisco, CA 94110
[Map](#) [Public transit](#)
Tel: (415) 695-5875
Fax: (415) 695-5311

ALTERNATE
FORMAT:




中語

Español

Large Print



Second Floor Plan

Accessibility		Location
	Boy's, Girl's, & Unisex restroom	Along the east end of corridor, across from stairs.
	Drinking fountain	Along the east end of corridor, between student restrooms.
	Elevator	Elevator in vestibule off of corridor.