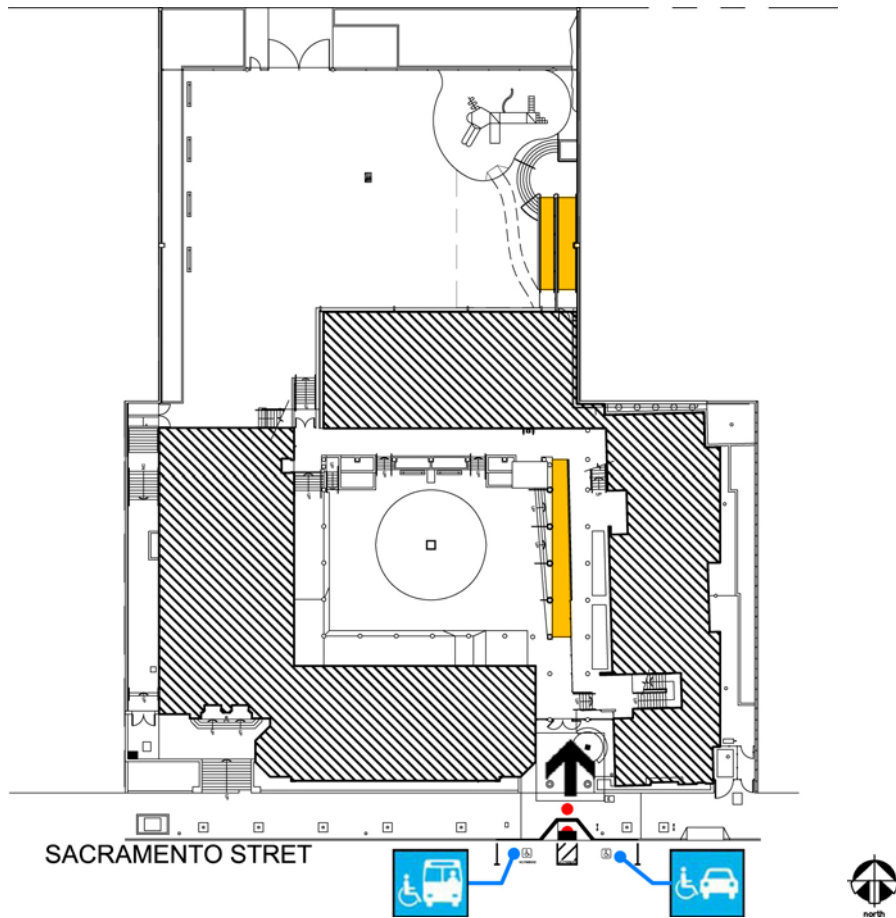







Claire Lilienthal Madison

3950 Sacramento Street
 San Francisco, CA 94118
[Map](#) [Public transit](#)
 Tel: (415)750-8603
 Fax: (415)750-8606

| |
|------------------------------|
| ALTERNATE FORMAT: |
| 中語 |
| Español |
| Large Print |



Site Plan

| Accessibility | | Location |
|---|-----------------------------------|--|
|  | Access path of travel | From Sacramento St, enter double gates on southeast side of building to courtyard. |
|  | Accessible parking space | On Sacramento Street. |
|  | Accessible passenger loading zone | On Sacramento Street. |
|  | Accessible entrance | Enter double gates on southeast side of building to courtyard. |
|  | Ramp | One ramp on the east side of the courtyard, and second ramp on second floor, north side of building to playground. |

Claire Lilienthal Madison

3950 Sacramento Street
San Francisco, CA 94118

[Map](#) [Public transit](#)

Tel: (415)750-8603

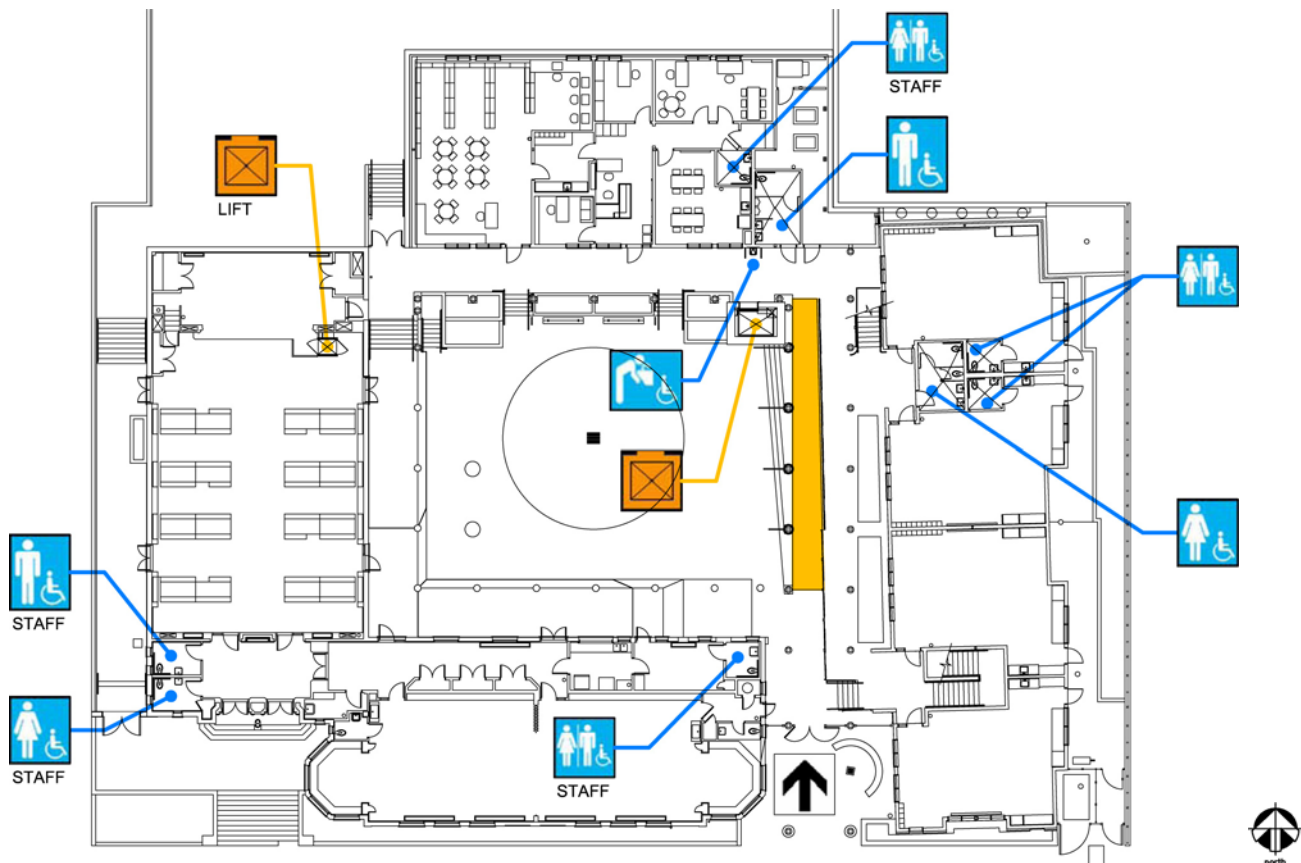
Fax: (415)750-8606

ALTERNATE
FORMAT:

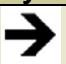




中語

Español

Large Print



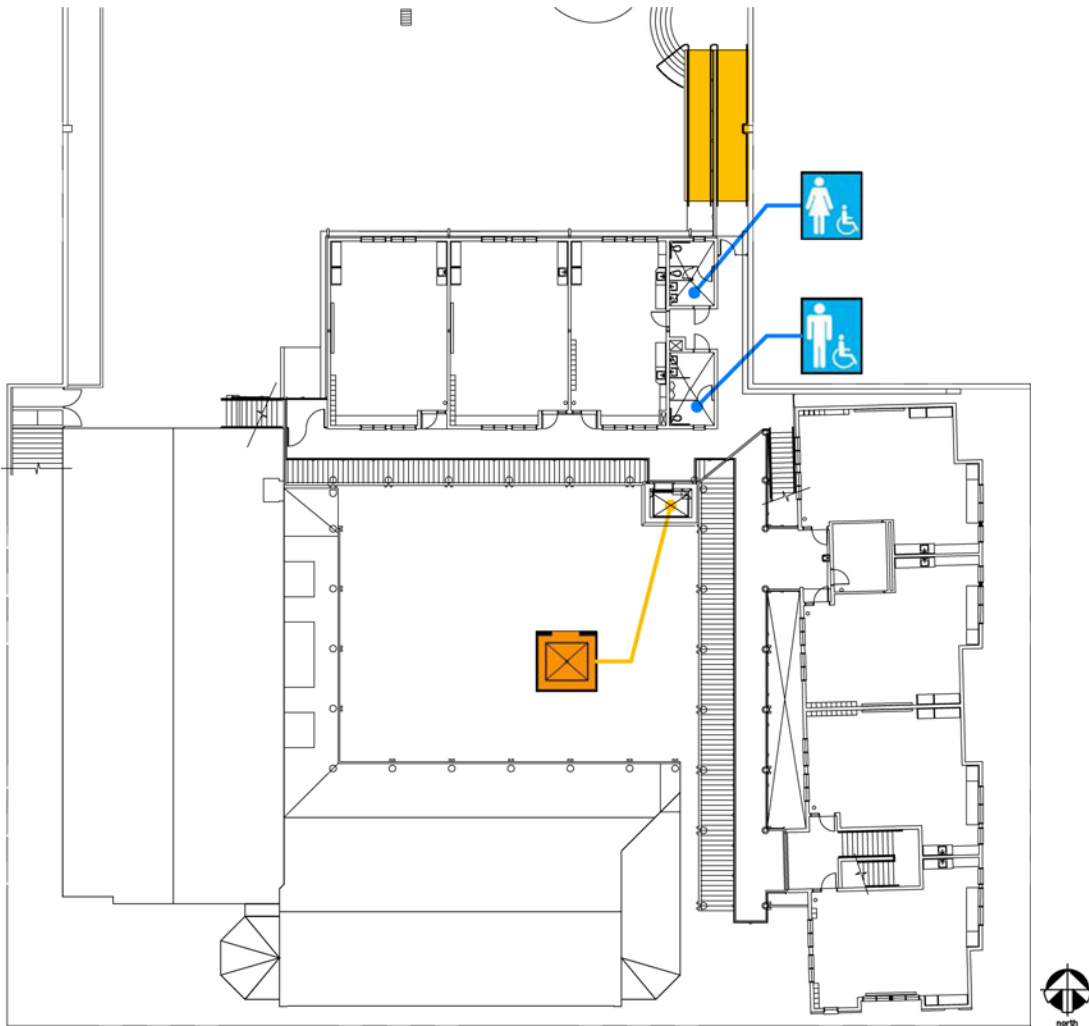
First Floor Plan

| Accessibility | | Location |
|---|----------------------------------|---|
|  | Accessible entrance | Enter double gates on southeast side of building to courtyard. |
|  | Ramp | One ramp on the east side of the courtyard. |
|  | Boy's, Girl's, & Unisex restroom | Boy's restroom across from elevator and ramp. Girl's restroom by the kindergarten classrooms. Unisex restrooms in kindergarten classrooms. Staff restrooms in admin area and off of lobby on south side of cafeteria. |
|  | Drinking fountain | North side of courtyard outside of Boy's restroom. |
|  | Elevator | Elevator at north side of courtyard across from Boy's restroom. Wheelchair lift available for stage access in cafeteria. |




Claire Lilienthal Madison

3950 Sacramento Street
 San Francisco, CA 94118
[Map](#) [Public transit](#)
 Tel: (415)750-8603
 Fax: (415)750-8606

| |
|----------------------|
| ALTERNATE FORMAT: |
| 中語 |
| Español |
| Large Print |



Second Floor Plan

| Accessibility | | Location |
|---------------|---|--|
| |  | Ramp North side of building to playground |
| |  | Boy's, Girl's, & Unisex restroom Boy's & Girl's restroom down north corridor from elevator and center stairs. |
| |  | Elevator North side of building across from center stairs. |