



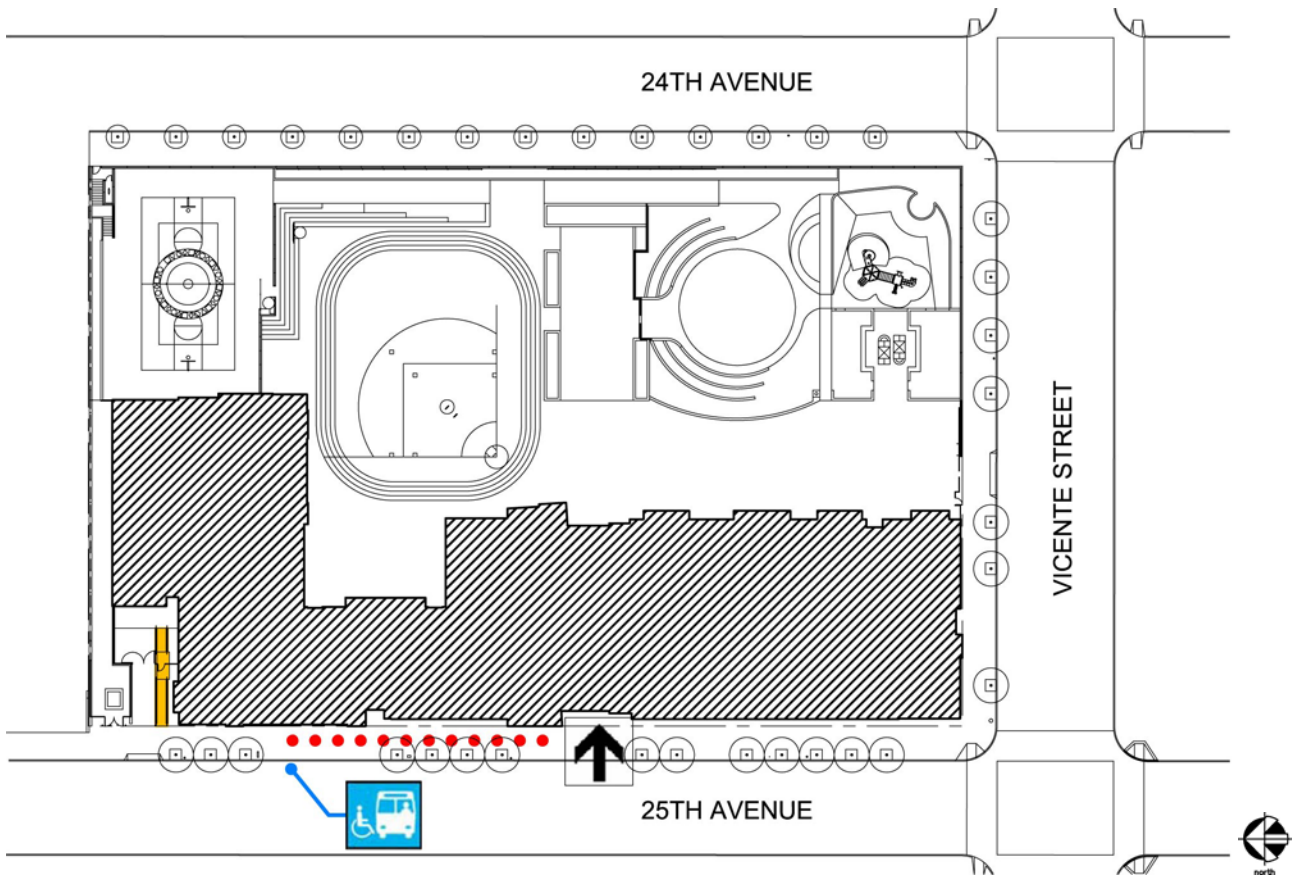
Dianne Feinstein Elementary

2550 25th Avenue
 San Francisco, CA 94116
[Map](#) [Public transit](#)
 Tel: (415)615-8460
 Fax: (415)242-2532




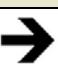

ALTERNATE
 FORMAT:

Español

Large Print



Site Plan

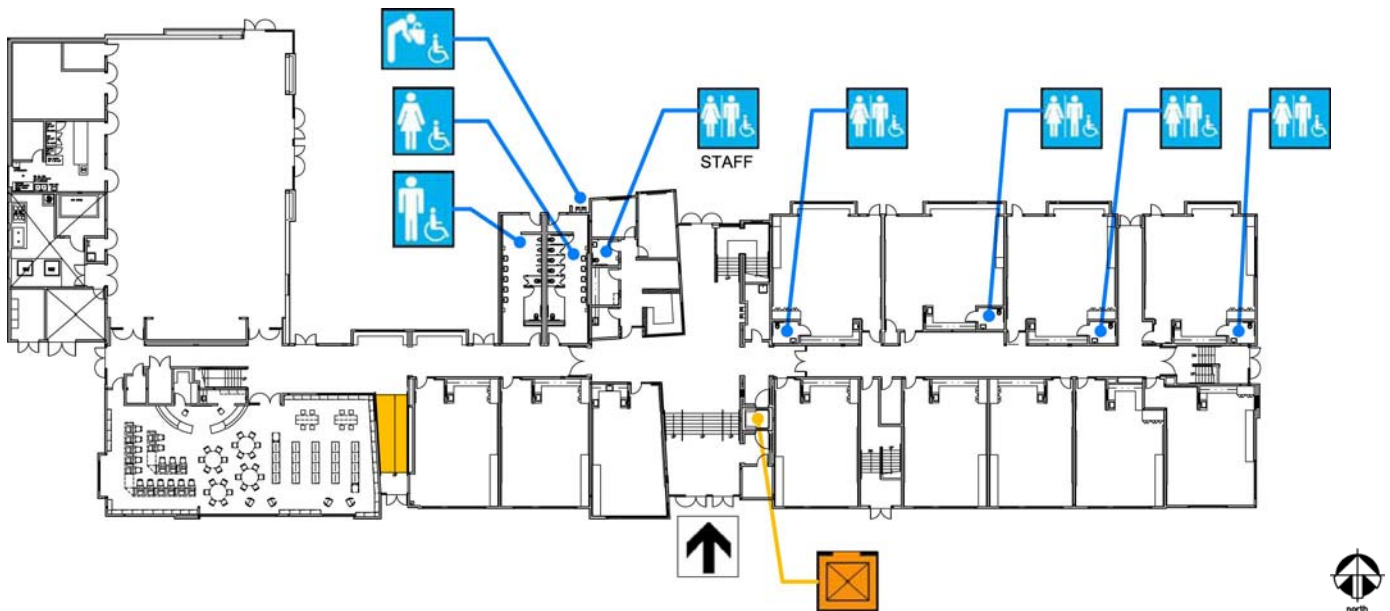
| Accessibility | | Location |
|---|-----------------------------------|---|
|  | Access path of travel | Along 25th Avenue to front entrance |
|  | Accessible parking space | |
|  | Accessible passenger loading zone | On 25 th Avenue on north side of the building |
|  | Accessible entrance | On 25 th Avenue on north side of the building; in interior courtyard |
|  | Ramp | Ramps located on north side of the building |
| | | |








Dianne Feinstein Elementary

2550 25th Avenue
 San Francisco, CA 94116
[Map](#) [Public transit](#)
 Tel: (415)615-8460
 Fax: (415)242-2532

| |
|----------------------|
| ALTERNATE FORMAT: |
| Español |
| Large Print |



First Floor Plan

| Accessibility | | Location |
|---|----------------------------------|---|
|  | Accessible entrance | Main Building – North side of bldg via ramp Main Building – east side of bldg via court yard |
|  | Ramp | At entrance to Main Building-North side |
|  | Boys', Girls', & Unisex restroom | Student restrooms at corridor of Main Building |
|  | Drinking fountain | On exterior of Main Building in interior courtyard |
|  | Elevator | Off of main corridor near restrooms |



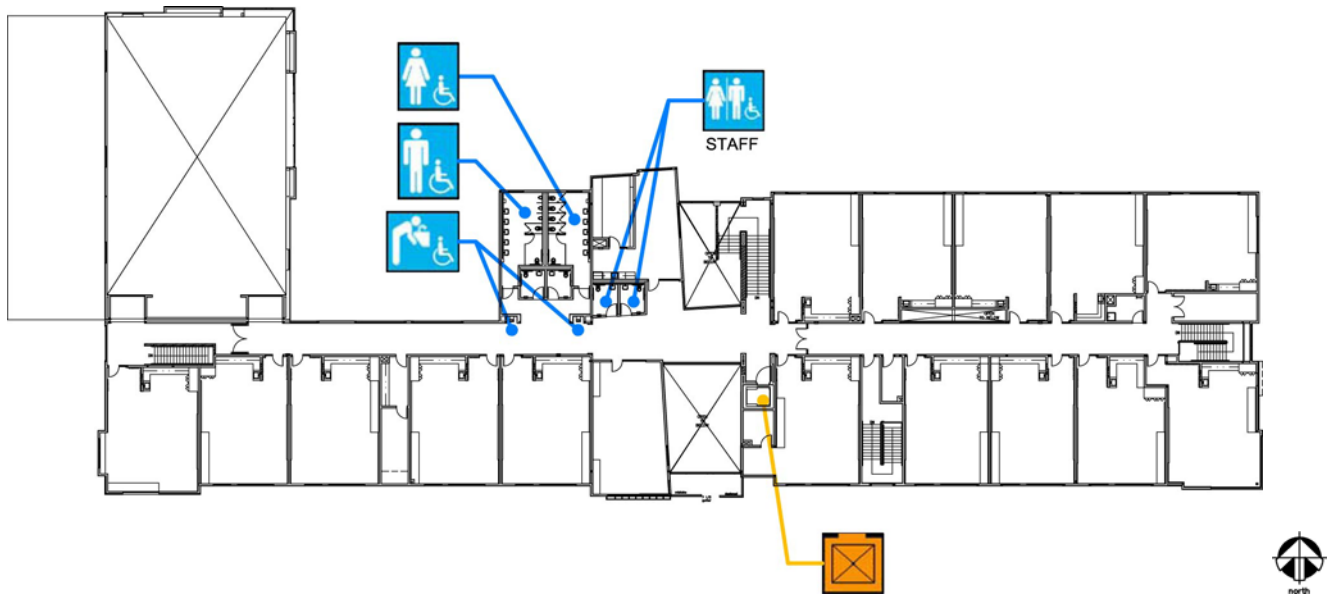
Dianne Feinstein Elementary

2550 25th Avenue
San Francisco, CA 94116
[Map](#) [Public transit](#)
Tel: (415)615-8460
Fax: (415)242-2532




ALTERNATE
FORMAT:

Español

Large Print



Second Floor Plan

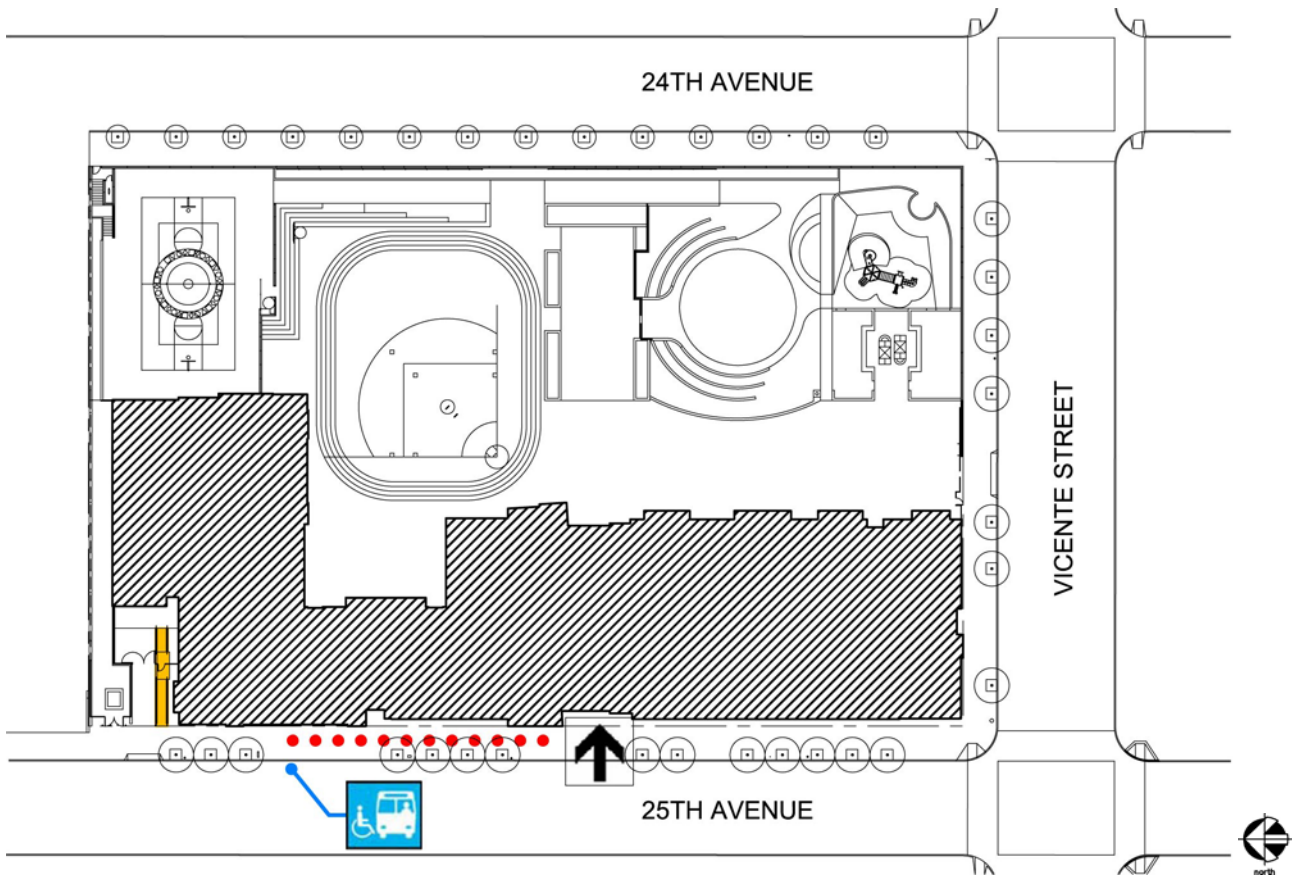
| Accessibility | | Location |
|---|----------------------------------|---|
|  | Boys', Girls', & Unisex restroom | Along Main corridor near elevator |
|  | Drinking fountain | Along Main corridor near restrooms |
|  | Elevator | Along Main corridor near restrooms, across from center staircase. |
| | | |






Dianne Feinstein Elementary

2550 25th Avenue
 San Francisco, CA 94116
[Map](#) [Public transit](#)
 Tel: (415)615-8460
 Fax: (415)242-2532

| |
|----------------------|
| ALTERNATE FORMAT: |
| Español |
| Large Print |



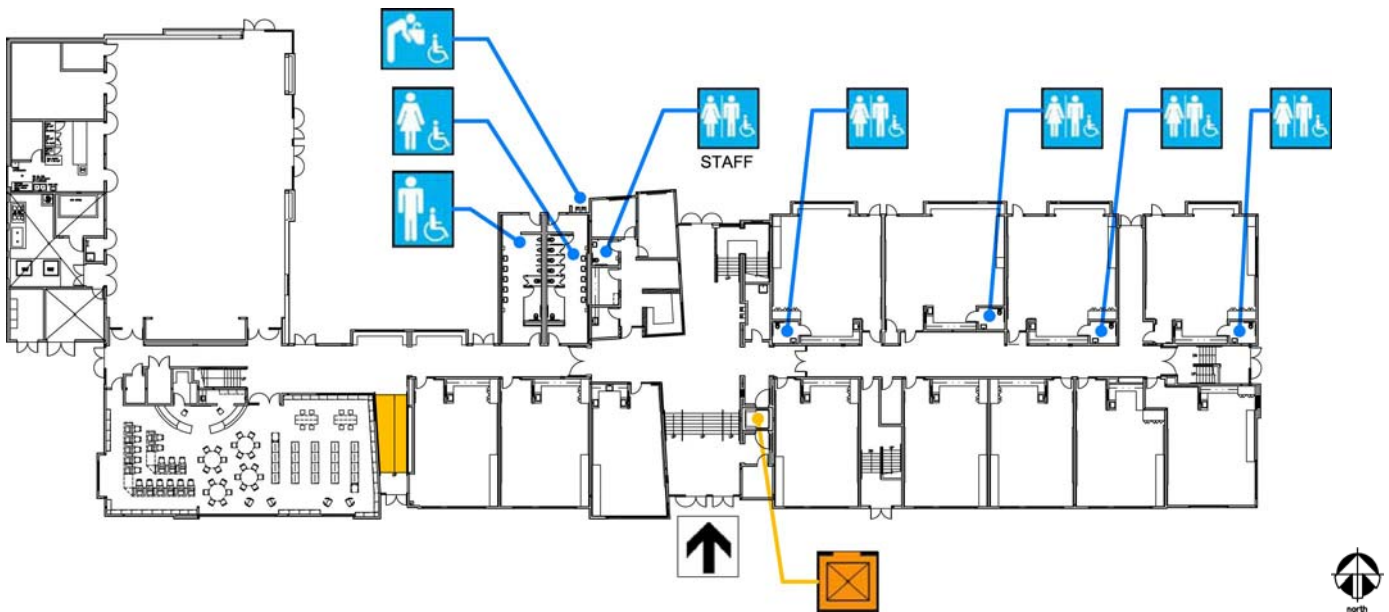
| | | |
|---|--|------------------|
| | | |
| | | 25 (25th Avenue) |
|  | | 25 |
|  | | 25 () |
|  | | |
| | | |



Dianne Feinstein Elementary

2550 25th Avenue
 San Francisco, CA 94116
[Map](#) [Public transit](#)
 Tel: (415)615-8460
 Fax: (415)242-2532

| |
|----------------------|
| ALTERNATE FORMAT: |
| |
| Español |
| Large Print |



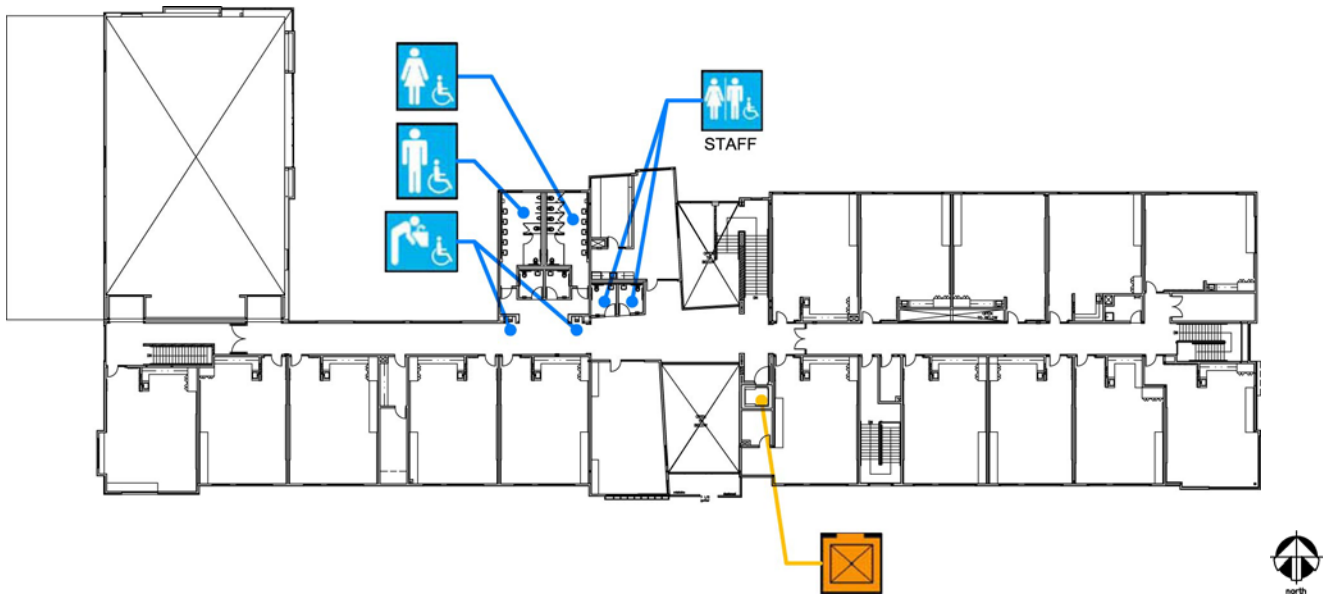
| | | |
|---------|--|-----|
| | | |
| ➔ | | () |
| | | () |
| | | |
| ♿ ♿ ♿ ♿ | | |
| ♿ | | () |
| 📦 | | () |






Dianne Feinstein Elementary

2550 25th Avenue
 San Francisco, CA 94116
[Map](#) [Public transit](#)
 Tel: (415)615-8460
 Fax: (415)242-2532

| |
|----------------------|
| ALTERNATE FORMAT: |
| Español |
| Large Print |



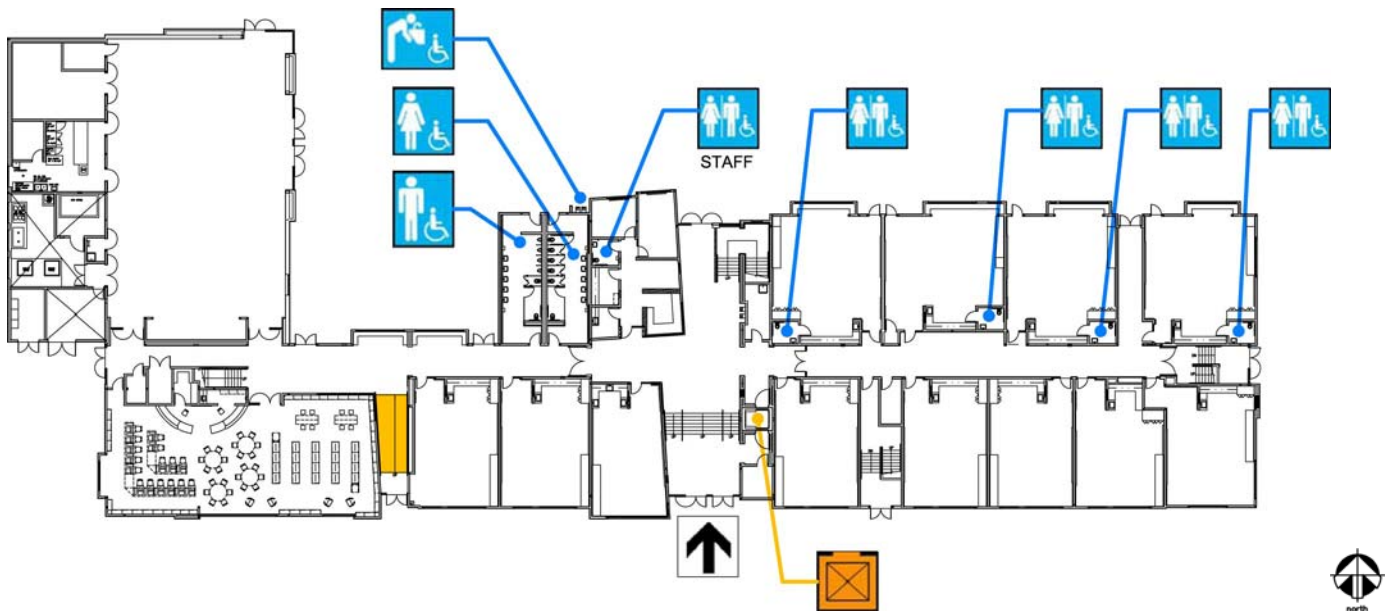
| | | |
|---|--|-----|
| | | |
|  | | () |
|  | | () |
|  | | () |
| | | |








Dianne Feinstein Elementary

2550 25th Avenue
 San Francisco, CA 94116
[Mapa](#) [Transporte público](#)
 Tel: (415)615-8460
 Fax: (415)242-2532

| |
|----------------------|
| ALTERNATE FORMAT: |
| Español |
| Large Print |



Plano del Primer piso

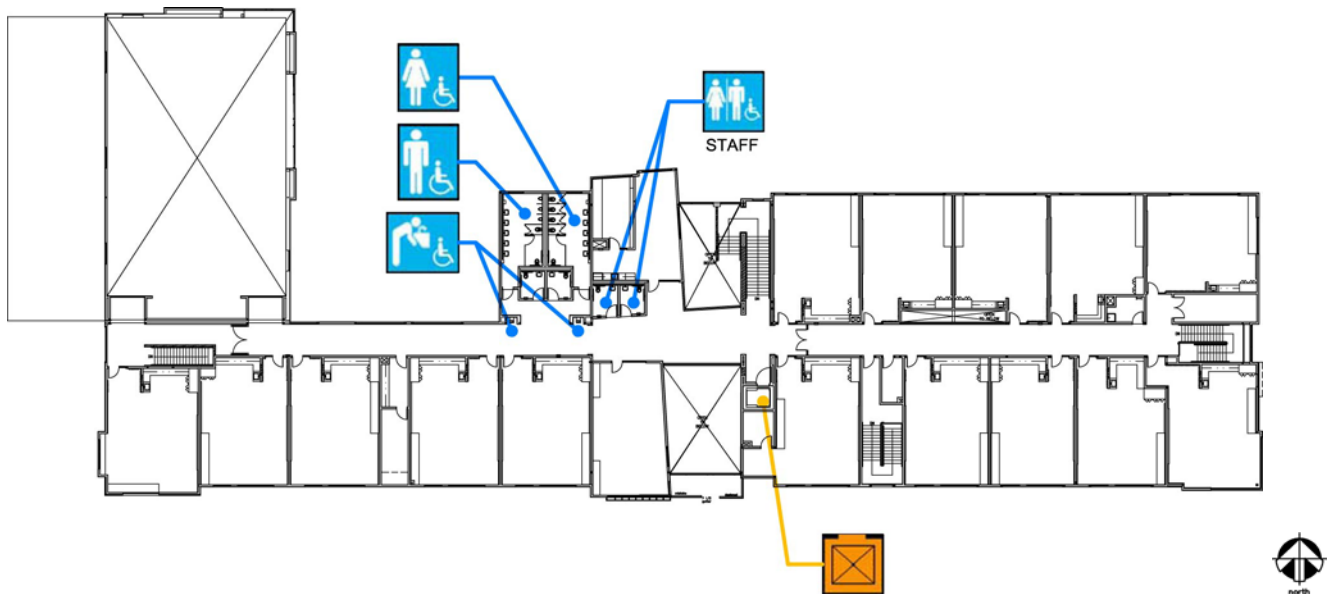
| Accesibilidad | | Ubicación |
|---|---|--|
|  | Entrada de acceso | Edificio principal – del lado norte del edificio vía rampa Edificio principal – del lado este del edificio desde el patio |
|  | Rampa | En la entrada principal del edificio del lado norte |
|  | Baños para niños y niñas y de uso común | Los baños de los estudiantes en el corredor del edificio principal |
|  | Bebedero | En el exterior del edificio principal en el patio interior |
|  | Elevador | A un lado del corredor principal cerca de los baños |






Dianne Feinstein Elementary

2550 25th Avenue
 San Francisco, CA 94116
[Mapa](#) [Transporte público](#)
 Tel: (415)615-8460
 Fax: (415)242-2532

| |
|----------------------|
| ALTERNATE FORMAT: |
| Español |
| Large Print |



Plano del segundo piso

| Accesibilidad | | Ubicación |
|---|---|---|
|  | Baños para niños y niñas y de uso común | A lo largo del corredor principal cerca del elevador |
|  | Bebedero | A lo largo del corredor principal cerca de los baños |
|  | Elevador | A lo largo del corredor principal cerca de los baños, del otro lado de la escalera de en medio. |
| | | |