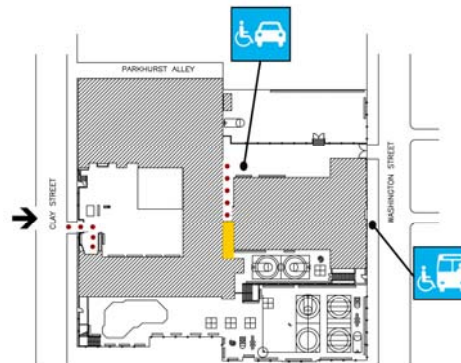











**Gordon J. Lau
Elementary School**

950 Clay Street
San Francisco, CA 94108
Tel: (415) 291-7921
Fax: (415) 291-7952



Site Plan

● Accessible ◆ Functionally accessible

Accessibility	Location	Condition
 Access path of travel	From Washington Street, north side of Building 'A'	●
 Accessible parking stall	From Clay Street, south side of Building 'B'	●
 Passenger loading zone	From Washington Street to parking lot located at west side of Building 'A'	●
 Accessible entrance	On Washington Street in front of Building 'A'	●
 Ramp	Building 'A' is from Washington Street to west side of school Building 'B' is from Clay Street across play yard	●
 Boys' toilet, Girls' toilet, Unisex restroom	At north side of Building 'B' leading to elevator lobby	●
 Drinking fountain	See other floor plans	
 Elevator	See other floor plans	
 TTY (text telephone)	None	

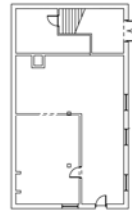
School Access Description

**Gordon J. Lau
Elementary School**

950 Clay Street
San Francisco, CA 94108
Tel: (415) 291-7921
Fax: (415) 291-7952

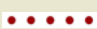










NO ADA ACCESS FOR THIS LEVEL



Bldg 'A' - Sub Basement

• Accessible ♦ Functionally accessible

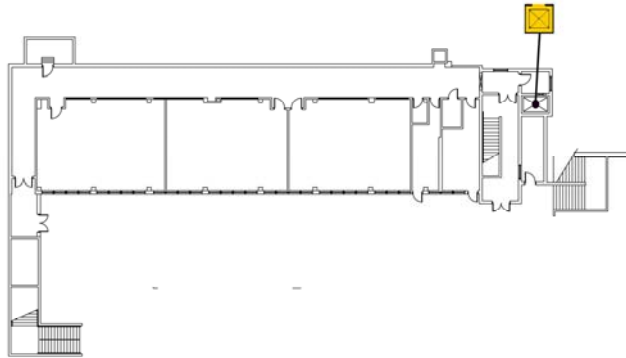
Accessibility	Location	Condition
 Access path of travel	Not applicable	
 Accessible parking stall	Not applicable	
 Passenger loading zone	Not applicable	
 Accessible entrance	Not applicable	
 Ramp	not applicable	
 Boys' toilet, Girls' toilet, Unisex restroom	Not applicable	
 Drinking fountain	Not applicable	
 Elevator	No elevator access on this floor	
 TTY (text telephone)	Not applicable	

School Access Description

Accessibility: • This floor is not a public space. It is not accessible.

**Gordon J. Lau
Elementary School**

950 Clay Street
San Francisco, CA 94108
Tel: (415) 291-7921
Fax: (415) 291-7952



Bldg 'B' - 1st Floor

• Accessible ♦ Functionally accessible

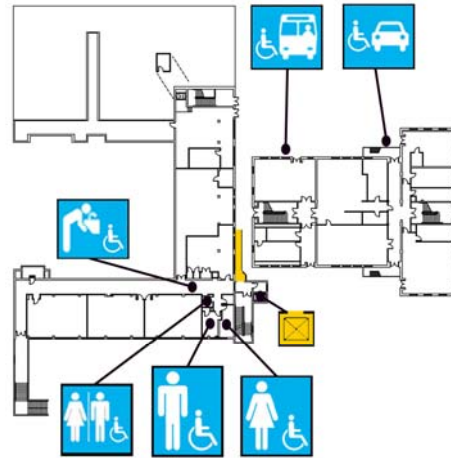
Accessibility	Location	Condition
Access path of travel	From elevator lobby to corridor	•
Accessible parking stall	Not applicable	
Passenger loading zone	Not applicable	
Accessible entrance	Not applicable	
Ramp	Not applicable	
Boys' toilet, Girls' toilet, Unisex restroom	None on this floor	
Drinking fountain	None on this floor	
Elevator	At northeast corner of Bldg. 'B' serves both buildings and all floors except sub-basement, first floor, and fourth floor of Bldg. 'A'	•
TTY (text telephone)	None	

School Access Description

- Restrooms:**
- Student and unisex staff restrooms on this floor are not ADA compliant.
- Drinking fountains:**
- Drinking fountain at the corridor is not ADA compliant.










Gordon J. Lau Elementary School

950 Clay Street
San Francisco, CA 94108
Tel: (415) 291-7921
Fax: (415) 291-7952



Bldg 'A'-1st Flr. & Bldg 'B'-2nd Flr.

● Accessible ◆ Functionally accessible

Accessibility	Location	Condition
 Access path of travel	Along corridors	●
 Accessible parking stall	Not applicable	
 Passenger loading zone	Not applicable	
 Accessible entrance	Building 'A' – west side of school through parking lot Building 'B' – from parking lot to path between Bldg. 'A' and 'B' via ramp	●
 Ramp	At north side of Building 'B'	●
 Boys' toilet, Girls' toilet, Unisex restroom	Student and staff restrooms at northeast area of Building 'B'	●
 Drinking fountain	Outside of staff restroom at east corridor in Building 'B'	●
 Elevator	At northeast corner of Bldg. 'B' serves both buildings and all floors except sub-basement, first floor, and fourth floor of Bldg. 'A'	●
 TTY (text telephone)	None	

School Access Description

Elevator:

Restrooms:

Drinking fountains:

- No elevator access on first floor of Building 'A'.
- Student restrooms at northwest corner of Building 'A' are not ADA compliant.
- Drinking fountain at the middle of east corridor in Building 'B' is not ADA compliant.

Gordon J. Lau Elementary School

950 Clay Street
San Francisco, CA 94108
Tel: (415) 291-7921
Fax: (415) 291-7952



Bldg 'A'-2nd Fl. & Bldg 'B'-3rd Fl.

● Accessible ◆ Functionally accessible

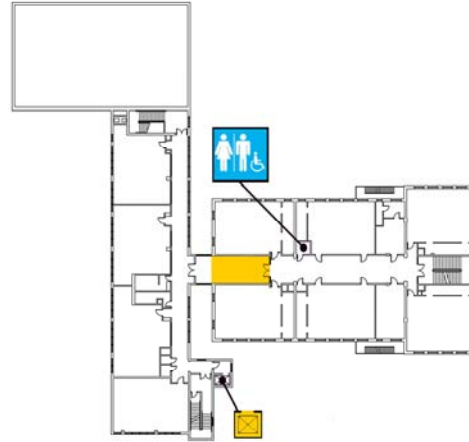
Accessibility	Location	Condition
Access path of travel	Building 'A' and Building 'B' are connected via corridors	●
Accessible parking stall	Not applicable	
Passenger loading zone	Not applicable	
Accessible entrance	Building 'B' – from Clay street through play yard	●
Ramp	Interior ramp is located at southern end of corridor in Bldg. 'A'	●
Boys' toilet, Girls' toilet, Unisex restroom	Unisex restroom at corridor in Bldg. 'A' Unisex restroom at east corridor in Bldg. 'B'	●
Drinking fountain	At east corridor in Bldg. 'B'	●
Elevator	At northeast corner of Bldg. 'B' serves both buildings and all floors except sub-basement, first floor, and fourth floor of Bldg. 'A'	●
TTY (text telephone)	None	

School Access Description

- Restrooms:**
- Student and staff restrooms on this floor are not ADA compliant.
 - Student restrooms in kindergarten classrooms are not ADA compliant.
- Drinking fountains:**
- Drinking fountains at center corridor in Bldg. 'A' and west corridor in Bldg. 'B' are not ADA compliant.
- Auditorium:**
- Auditorium stage is not accessible.










Gordon J. Lau Elementary School

950 Clay Street
San Francisco, CA 94108
Tel: (415) 291-7921
Fax: (415) 291-7952



Bldg 'A'-3rd Flr. & Bldg 'B'-4th Flr.

• Accessible ♦ Functionally accessible

Accessibility	Location	Condition
 Access path of travel	Building 'A' and Building 'B' are connected via corridors	•
 Accessible parking stall	Not applicable	
 Passenger loading zone	Not applicable	
 Accessible entrance	Not applicable	
 Ramp	Interior ramp is located at southern end of corridor in Bldg. 'A'	•
 Boys' toilet, Girls' toilet, Unisex restroom	Unisex restroom at corridor in Bldg. 'A'	•
 Drinking fountain	At corridors	•
 Elevator	At northeast corner of Bldg. 'B' serves both buildings and all floors except sub-basement, first floor, and fourth floor of Bldg. 'A'	•
 TTY (text telephone)	None	

School Access Description

Restrooms:

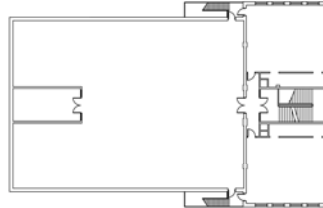
- Student restrooms located at the corridor in Bldg. 'B' are not ADA compliant.

**Gordon J. Lau
Elementary School**

950 Clay Street
San Francisco, CA 94108
Tel: (415) 291-7921
Fax: (415) 291-7952

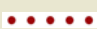










NO ELEVATOR ACCESS ON THIS FLOOR



Bldg 'A'-4th Floor

• Accessible ♦ Functionally accessible

Accessibility	Location	Condition
 Access path of travel	Not applicable	
 Accessible parking stall	Not applicable	
 Passenger loading zone	Not applicable	
 Accessible entrance	Not applicable	
 Ramp	Not applicable	
 Boys' toilet, Girls' toilet, Unisex restroom	None on this floor	
 Drinking fountain	None on this floor	
 Elevator	No elevator access on this floor	
 TTY (text telephone)	None	

School Access Description