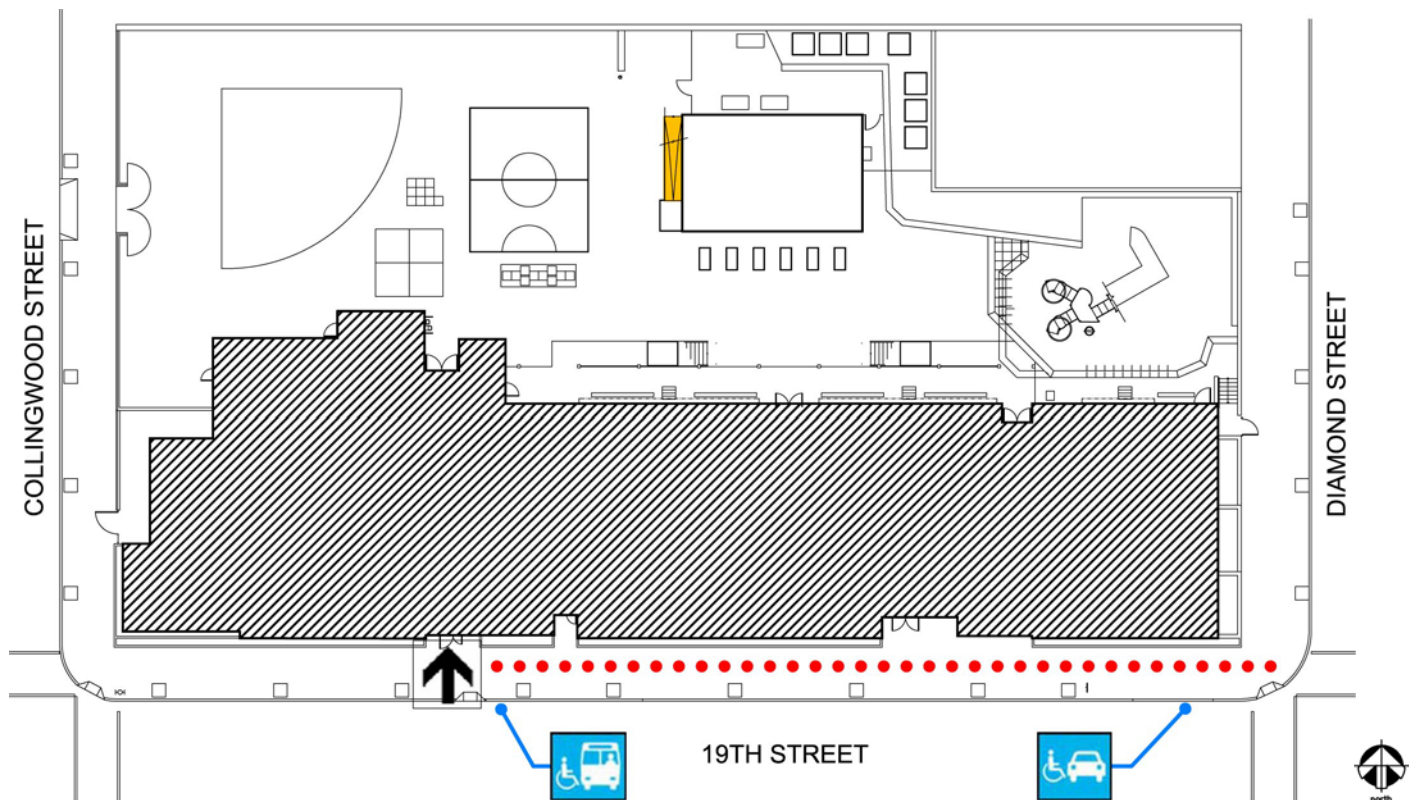









## Harvey Milk Civil Rights Elementary

4235 19<sup>th</sup> Street  
 San Francisco, CA 94114  
[Map](#) [Public transit](#)  
 Tel: (415) 241-6276  
 Fax: (415) 241-6545

ALTERNATIVE FORMAT:
中文
Español
Large Print



### Site Plan

Accessibility		Location
	Access path of travel	Along 19th Street.
	Accessible parking space	No on-site parking. On street accessible parking is on 19th Street.
	Accessible passenger loading zone	Along 19th Street.
	Accessible entrance	Along 19th Street.
	Ramp	Ramp to portable in playground



## Harvey Milk Civil Rights Elementary

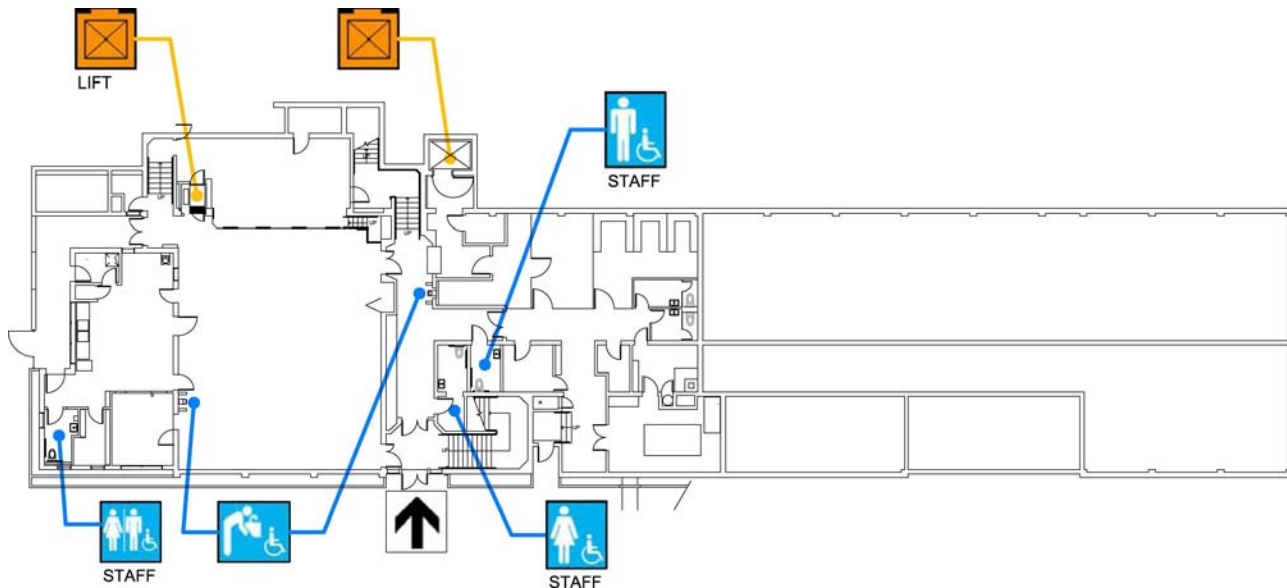
4235 19<sup>th</sup> Street  
 San Francisco, CA 94114  
[Map](#) [Public transit](#)  
 Tel: (415) 241-6276  
 Fax: (415) 241-6545

ALTERNAT  
 E FORMAT:





中文

Español

Large  
 Print



## Basement Floor Plan

Accessibility		Location
	Accessible entrance	From 19th Street
	Men's, Women's, Unisex restroom	Staff restrooms along corridor and in kitchen. Student restrooms on first & second floor.
	Drinking fountain	Along corridor.
	Elevator	Elevator on north side of building, from playground. Wheelchair lift provided at multipurpose room.



## Harvey Milk Civil Rights Elementary

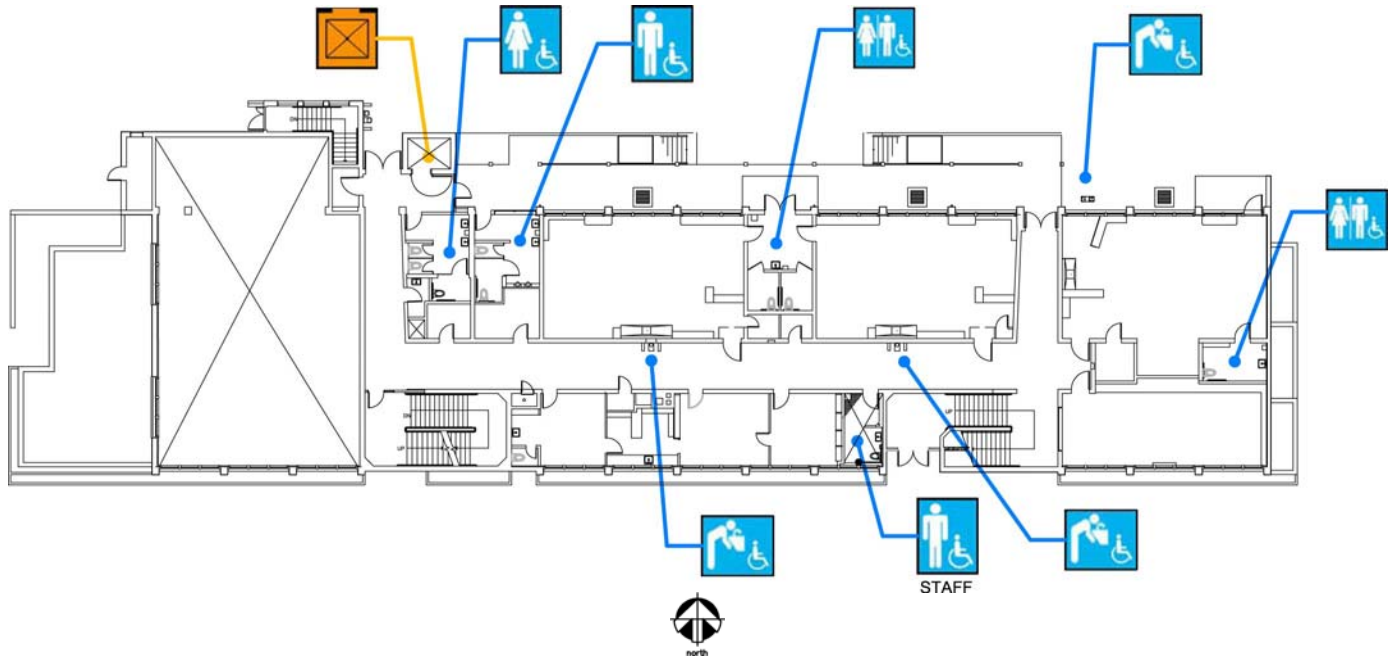
4235 19<sup>th</sup> Street  
San Francisco, CA 94114  
[Map](#) [Public transit](#)  
Tel: (415) 241-6276  
Fax: (415) 241-6545

ALTERNATE  
FORMAT:




中文

Español

Large  
Print



## First Floor Plan

Accessibility		Location
	Boys', Girls, & Unisex restroom	Student and Men staff restrooms along corridor. Women staff restroom on second floor. Unisex student restrooms in kindergarten classrooms.
	Drinking fountain	Along corridor and outside between building and play structure.
	Elevator	Elevator on north side of building



## Harvey Milk Civil Rights Elementary

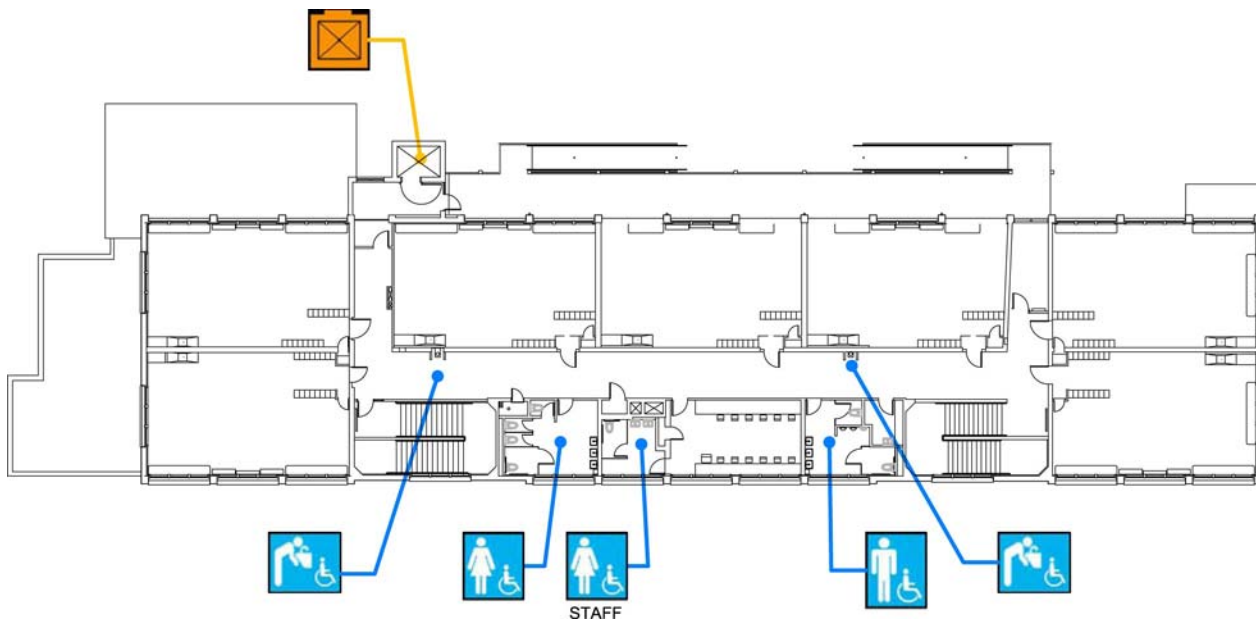
4235 19<sup>th</sup> Street  
San Francisco, CA 94114  
[Map](#) [Public transit](#)  
Tel: (415) 241-6276  
Fax: (415) 241-6545

ALTERNATE  
FORMAT:




中文

Español

Large  
Print



## Second Floor Plan

Accessibility		Location
	Boys', Girls, & Unisex restroom	Student & Women staff restrooms along corridor. Men's staff restroom on first floor.
	Drinking fountain	Along corridor.
	Elevator	Elevator on north side of building



## Harvey Milk Civil Rights Elementary

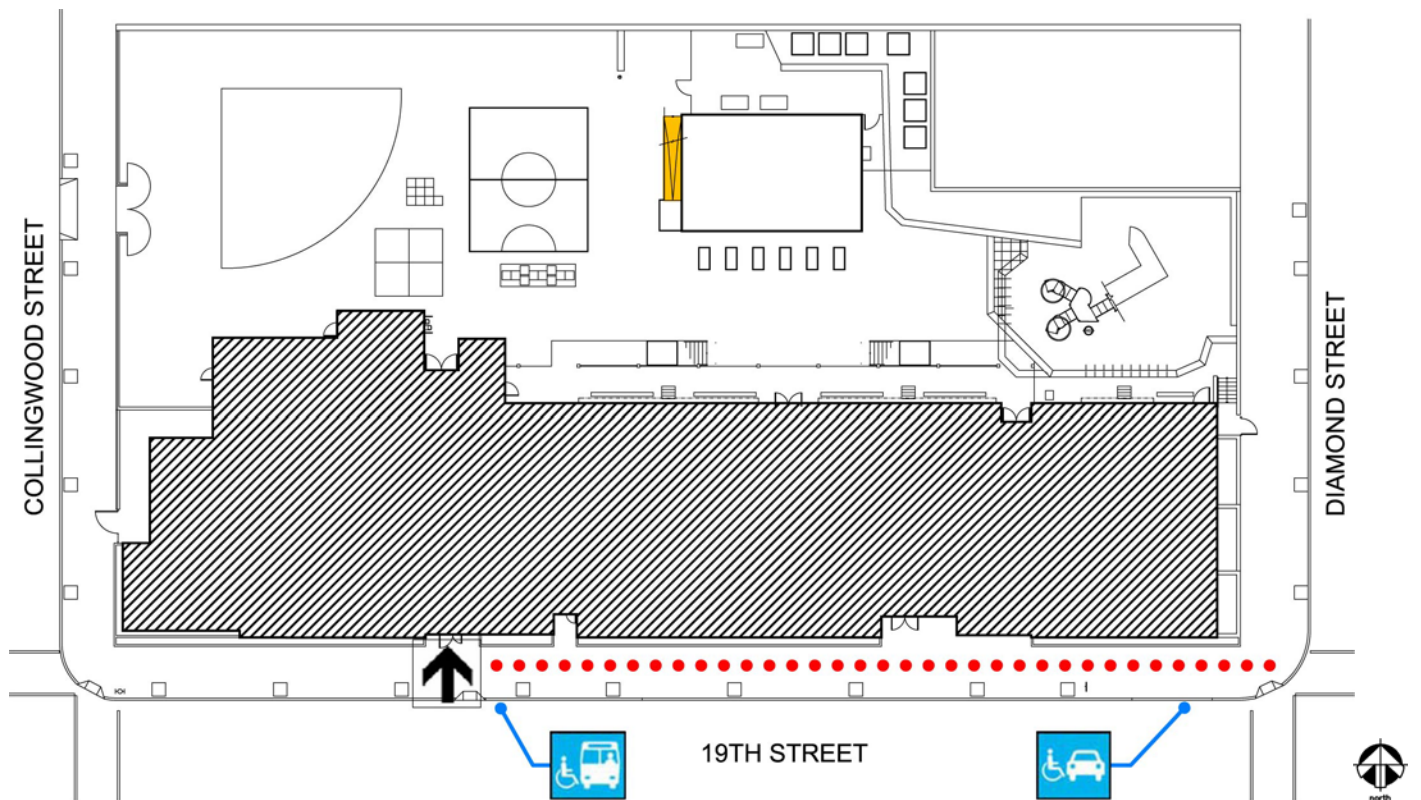
4235 19<sup>th</sup> Street  
 San Francisco, CA 94114  
[Map](#) [Public transit](#)  
 Tel: (415) 241-6276  
 Fax: (415) 241-6545

ALTERNATIVE FORMAT:






中文

Español

Large Print



校舍平面圖

殘障人士專用設施		位置
	專用通道	沿 19 街(19th Street)。
	專用車位	學校未能提供專用車位，19 街設有殘障人士專用車位。
	殘障人士上落專區	位於 19 街。
	專用入口	位於 19 街。
	輪椅坡道	輪椅坡道可通往操場臨時校舍。



## Harvey Milk Civil Rights Elementary

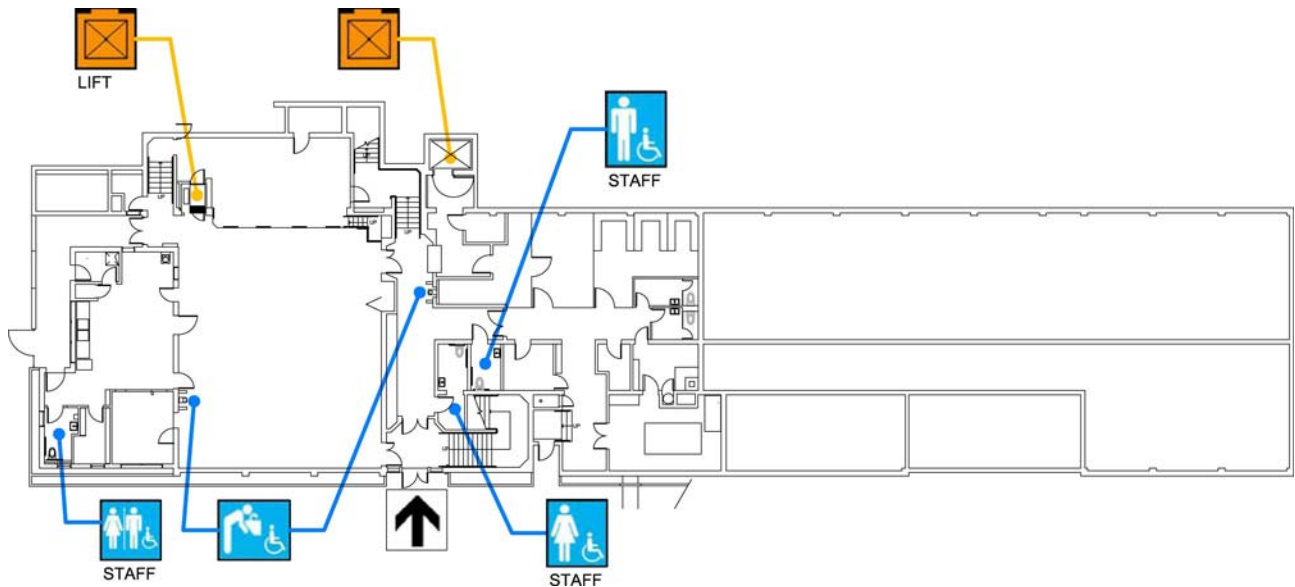
4235 19<sup>th</sup> Street  
 San Francisco, CA 94114  
[Map](#) [Public transit](#)  
 Tel: (415) 241-6276  
 Fax: (415) 241-6545

ALTERNATE  
 FORMAT:





中文

Español

Large  
 Print



## 底層平面圖

殘障人士專用設施		位置
	專用通道	沿 19 街。
	男生/女生及殘障人士 洗手間	教職員洗手間設於走廊旁和廚房。學生洗手間設於一樓和二樓。
	飲水器	設於走廊。
	專用升降機	專用升降機位於校舍北翼。多用途室內設有輪椅升降架。



## Harvey Milk Civil Rights Elementary

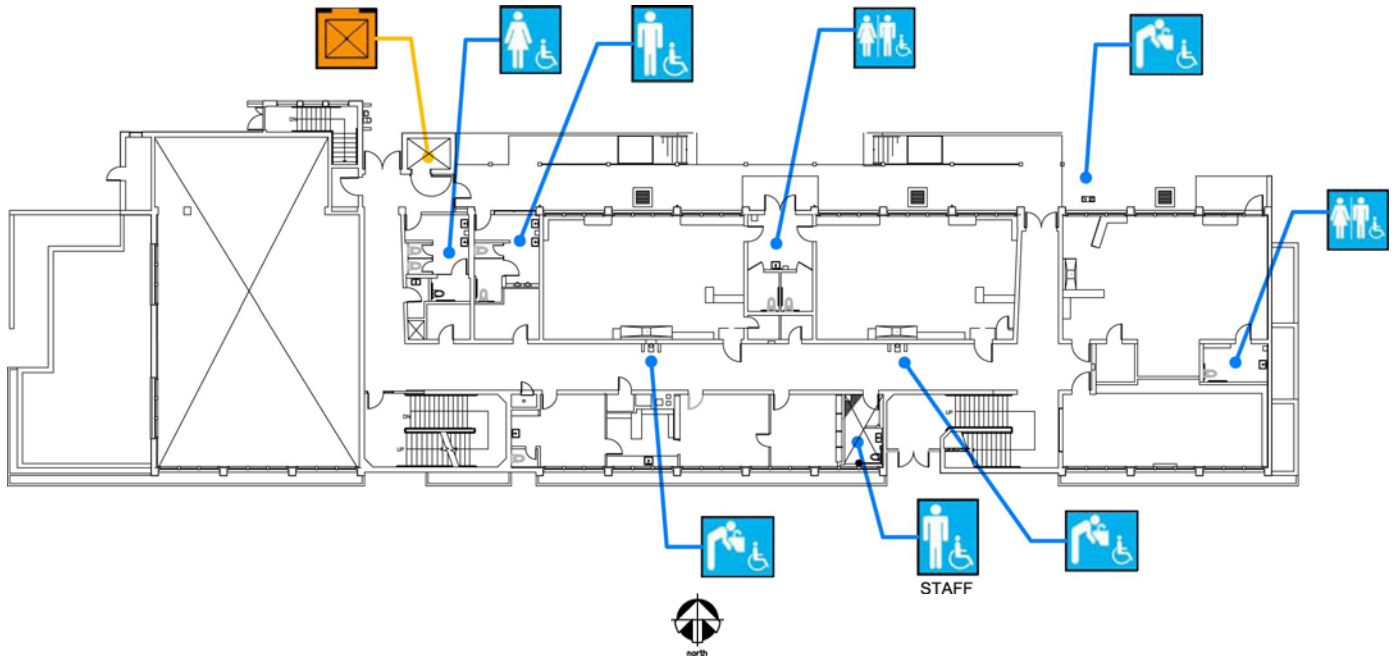
4235 19<sup>th</sup> Street  
San Francisco, CA 94114  
[Map](#) [Public transit](#)  
Tel: (415) 241-6276  
Fax: (415) 241-6545

ALTERNATIVE FORMAT:




中文

Español

Large Print



### 一樓平面圖

殘障人士專用設施		位置
	男生/女生及殘障人士洗手間	學生和男職員洗手間設於走廊旁，女職員洗手間設於二樓，殘障人士洗手間設於幼稚園課室內。
	飲水器	設於走廊、校舍和遊樂架旁。
	專用升降機	專用升降機設於校舍北翼。



## Harvey Milk Civil Rights Elementary

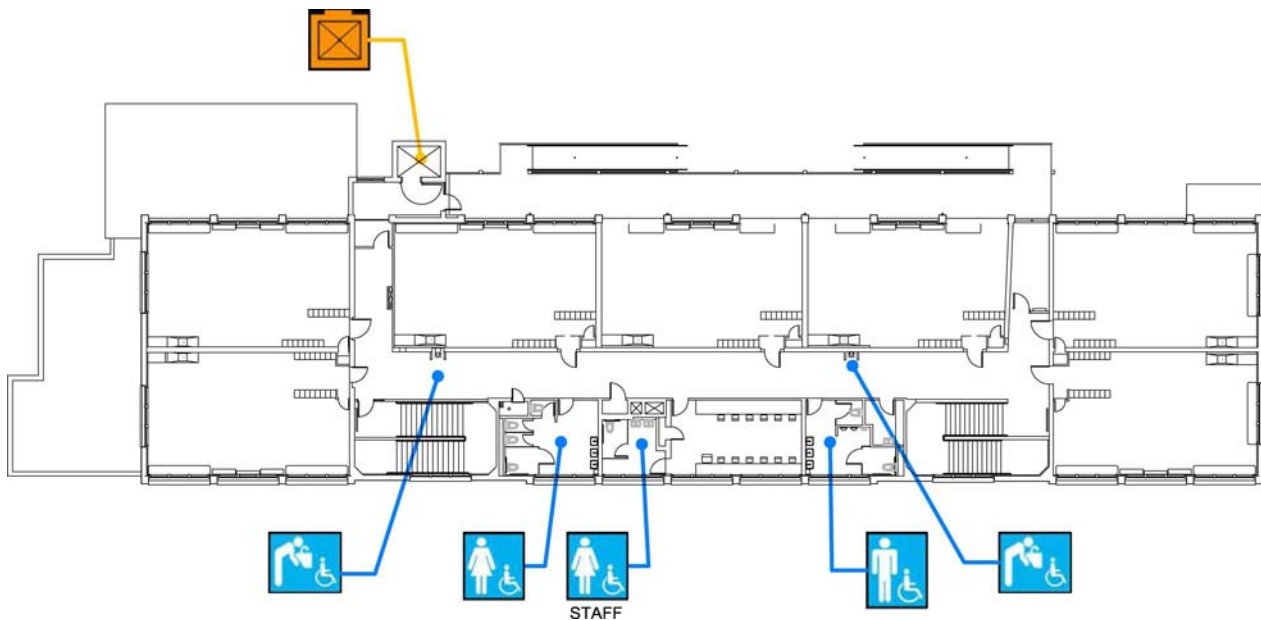
4235 19<sup>th</sup> Street  
San Francisco, CA 94114  
[Map](#) [Public transit](#)  
Tel: (415) 241-6276  
Fax: (415) 241-6545

ALTERNATIVE FORMAT:




中文

Español

Large Print



### 一樓平面圖

殘障人士專用設施		位置
	男生/女生及殘障人士洗手間	學生和女職員洗手間設於走廊旁，男職員洗手間設於一樓。
	飲水器	設於走廊。
	專用升降機	專用升降機位於校舍北翼。



## Harvey Milk Civil Rights Elementary

4235 19<sup>th</sup> Street  
San Francisco, CA 94114

[Map](#) (mapa) [Public transit](#) (Transporte público)

Tel: (415) 241-6276

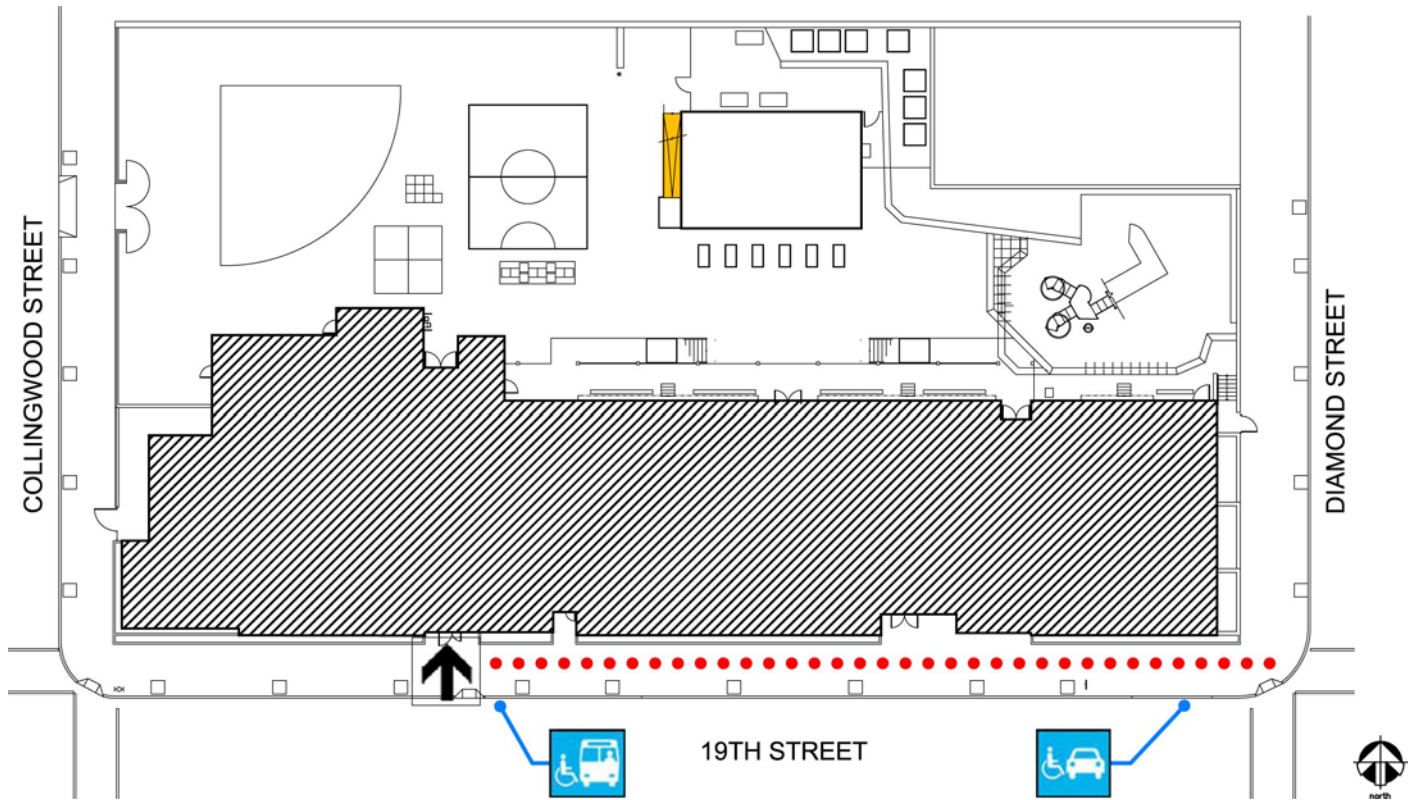
Fax: (415) 241-6545

ALTERNATIVE FORMAT:






中文

Español

Large Print



### Plano de las instalaciones

Accesibilidad		Ubicación
	Acceso peatonal	Por la calle 19.
	Espacio accesible para estacionamiento	No hay estacionamiento en el plantel. Estacionamiento accesible sobre la calle 19.
	Zona de acceso para pasajeros	Por la calle 19.
	Entradas de acceso	Por la calle 19.
	Rampa	Rampa para el salón-portátil (bungalow), en el patio de juegos.



## Harvey Milk Civil Rights Elementary

4235 19<sup>th</sup> Street  
San Francisco, CA 94114

[Map](#) (mapa) [Public transit](#) (Transporte público)

Tel: (415) 241-6276

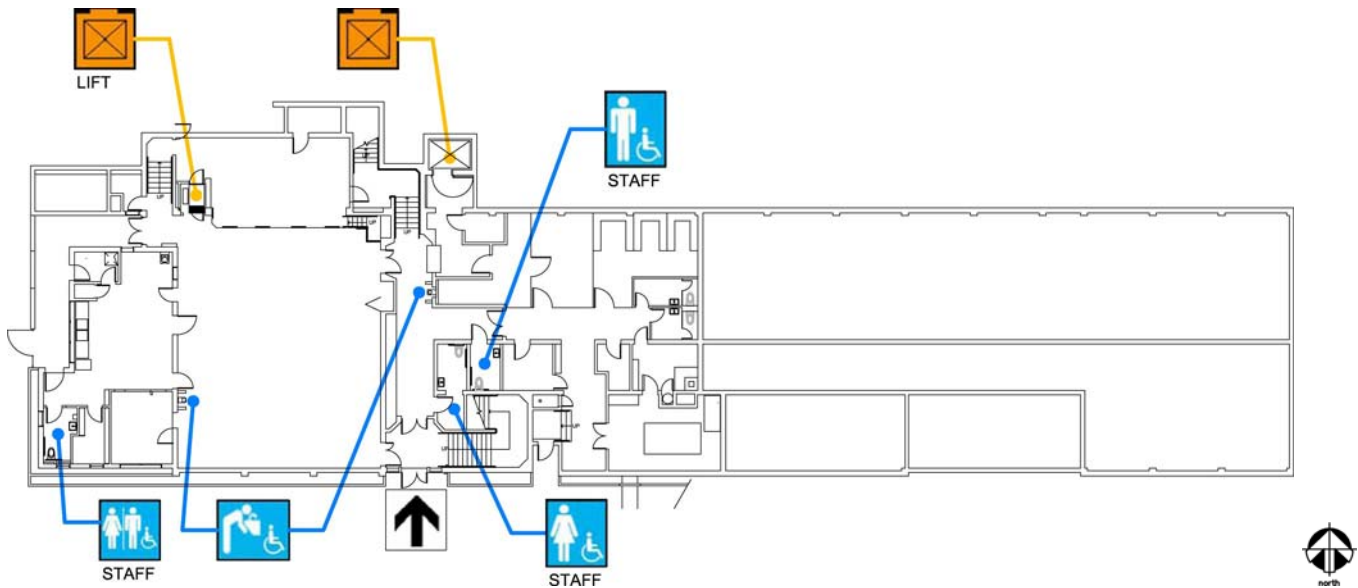
Fax: (415) 241-6545

ALTERNAT  
E FORMAT:





中文

Español

Large Print



### Plano del sótano.

Accesibilidad		Ubicación
	Entradas de acceso	Por la calle 19.
	Baños para Niños, Niñas, y de uso común.	Para el personal, a lo largo del corredor, y en la cocina. Baños para los estudiantes en el primer y segundo piso.
	Bebedero	Por el corredor.
	Elevador	En el patio de recreo por el lado norte del edificio. El elevador para sillas de ruedas, se encuentra en el salón multiusos.



## Harvey Milk Civil Rights Elementary

4235 19<sup>th</sup> Street  
San Francisco, CA 94114

[Map](#) (mapa) [Public transit](#) (Transporte público)

Tel: (415) 241-6276

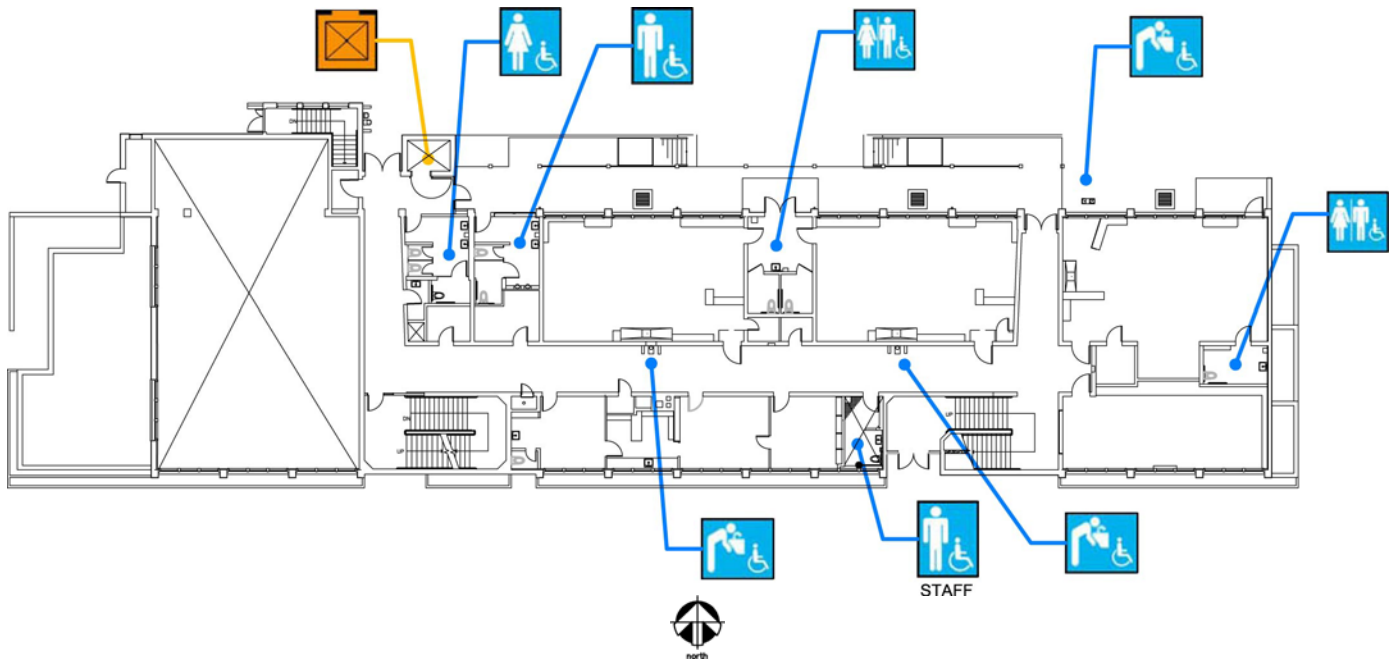
Fax: (415) 241-6545

ALTERNAT  
E FORMAT:




中文

Español

Large Print



### Plano del primer piso

Accesibilidad		Ubicación
	Baños para Niños, Niñas, y de uso común.	Para estudiantes y personal masculino, están por el corredor. Baños para el personal femenino, están en el segundo piso. Baños de uso común, están en los salones de Kindergaden.
	Bebedero	Por el corredor, y afuera, entre el edificio y el área de juegos.
	Elevador	En el lado norte del edificio.



## Harvey Milk Civil Rights Elementary

4235 19<sup>th</sup> Street  
San Francisco, CA 94114

[Map](#) (mapa) [Public transit](#) (Transporte público)

Tel: (415) 241-6276

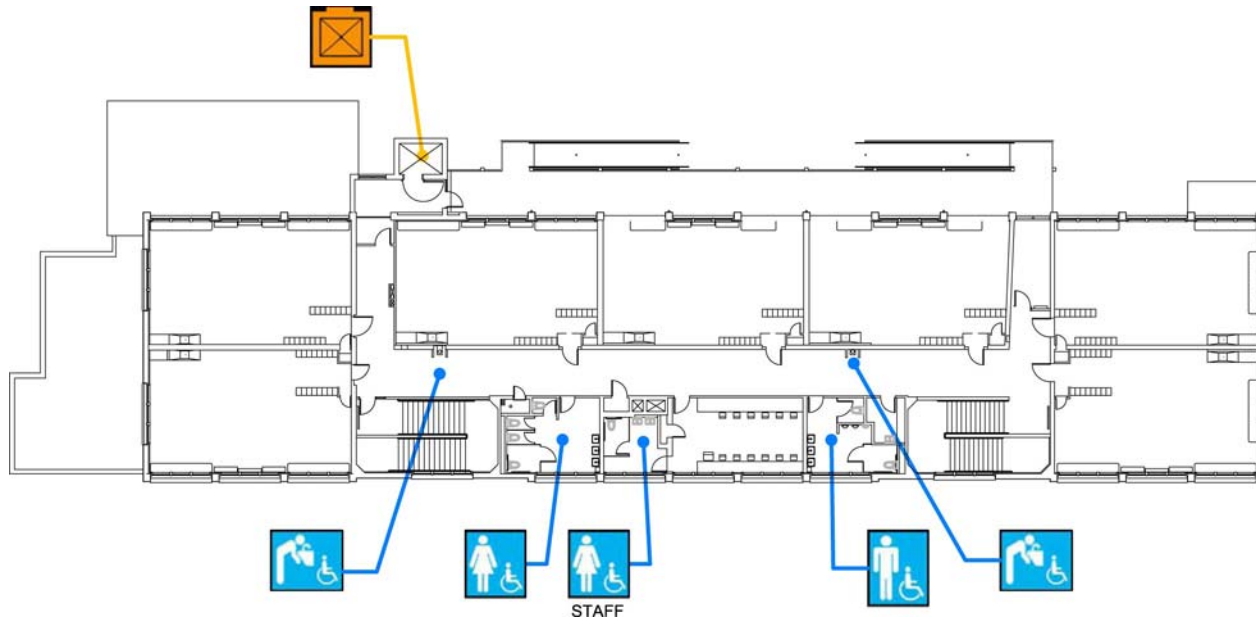
Fax: (415) 241-6545

ALTERNAT  
E FORMAT:




中文

Español

Large Print



### Plano del segundo piso

Accesibilidad		Ubicación
	Baños para Hombres, Mujeres, y de uso común.	Para los estudiantes y el personal femenino, por el corredor. El baño para empleados masculinos, está en el primer piso.
	Bebedero	A lo largo del corredor.
	Elevador	En el lado norte del edificio.