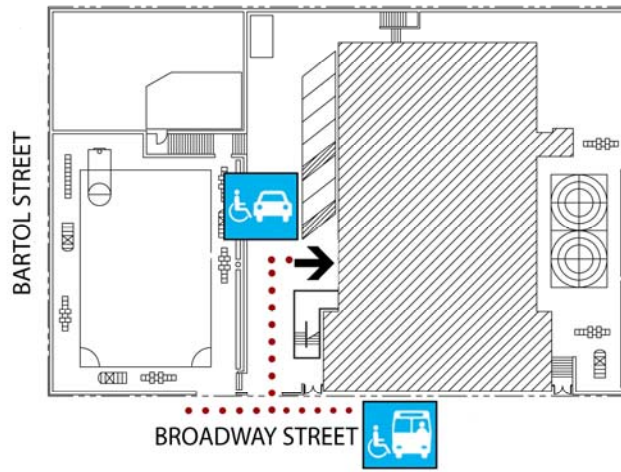


## John Yehall-Chin Elementary School

350 Broadway Street  
San Francisco, CA 94133  
Tel: (415) 291-7946  
Fax: (415) 291-7943



## Site Plan

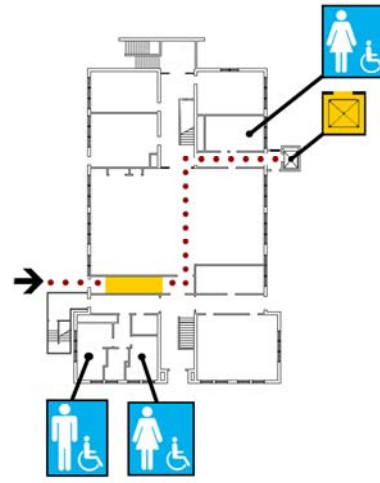
● Accessible ◆ Functionally accessible

Accessibility	Location	Condition
Access path of travel	From Broadway Street to entrance via driveway	●
Accessible parking stall	In parking area at west side of school past accessible entrance	●
Passenger loading zone	On Broadway Street in front of school	●
Accessible entrance	At west side of school next to stairs	●
Ramp	Not applicable	
Boys' toilet, Girls' toilet, Unisex restroom	See other plans for locations	
Drinking fountain	In middle and lower yards	●
Elevator	See other plans for locations	
TTY (text telephone)	None	

## School Access Description

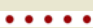








## John Yehall-Chin Elementary School

350 Broadway Street  
San Francisco, CA 94133  
Tel: (415) 291-7946  
Fax: (415) 291-7943



## First Floor Plan

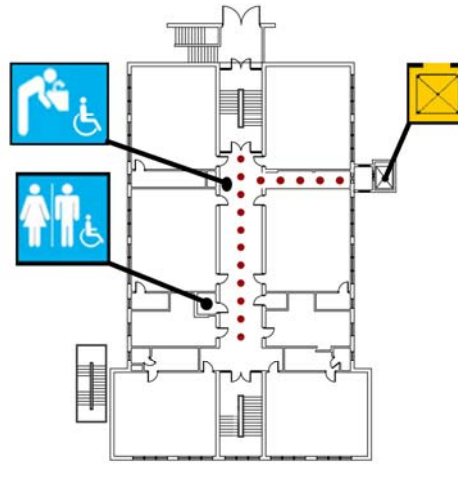
• Accessible ♦ Functionally accessible

Accessibility	Location	Condition
 Access path of travel	Along south corridor via ramp through Multi-Purpose Room to north corridor leading to elevator lobby	•
 Accessible parking stall	Not applicable	
 Passenger loading zone	Not applicable	
 Accessible entrance	At west side of school next to stairs	•
 Ramp	Interior ramp at south corridor	•
 Boys' toilet, Girls' toilet, Unisex restroom	Student and men restrooms at southwest corner of school Women restroom at northeast area of school	•
 Drinking fountain	None on this floor	
 Elevator	At east side of building serves all floors	•
 TTY (text telephone)	None	

### School Access Description









## John Yehall-Chin Elementary School

350 Broadway Street  
San Francisco, CA 94133  
Tel: (415) 291-7946  
Fax: (415) 291-7943



## Second Floor Plan

● Accessible ◆ Functionally accessible

Accessibility	Location	Condition
◆◆◆◆◆ Access path of travel	From elevator lobby along corridors	●
 Accessible parking stall	Not applicable	
 Passenger loading zone	Not applicable	
 Accessible entrance	Not applicable	
 Ramp	Not applicable	
 Boys' toilet, Girls' toilet, Unisex restroom	Unisex staff restroom at west side of center corridor	●
 Drinking fountain	At west side of center corridor adjacent to north stair	●
 Elevator	At east side of building serves all floors	●
 TTY (text telephone)	None	

### School Access Description

**Restrooms:**

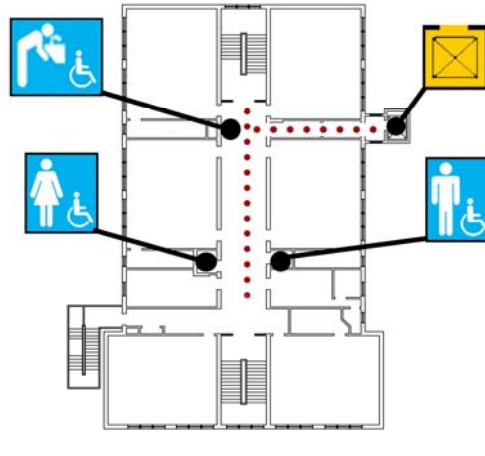
- Unisex staff restroom located at east side of center corridor is not ADA compliant.

**Drinking fountains:**

- Drinking fountain located at east side of center corridor adjacent to south stair is not ADA compliant.




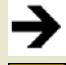





## John Yehall-Chin Elementary School

350 Broadway Street  
 San Francisco, CA 94133  
 Tel: (415) 291-7946  
 Fax: (415) 291-7943



## Third Floor Plan

• Accessible ♦ Functionally accessible

Accessibility	Location	Condition
 Access path of travel	From elevator lobby along corridors	•
 Accessible parking stall	Not applicable	
 Passenger loading zone	Not applicable	
 Accessible entrance	Not applicable	
 Ramp	Not applicable	
 Boys' toilet, Girls' toilet, Unisex restroom	Student restrooms in middle of center corridor	•
 Drinking fountain	At west side of center corridor adjacent to north stair	•
 Elevator	At east side of building serves all floors	•
 TTY (text telephone)	None	

### School Access Description

#### Drinking fountains:

- Drinking fountain located at east side of center corridor adjacent to south stair is not ADA compliant.