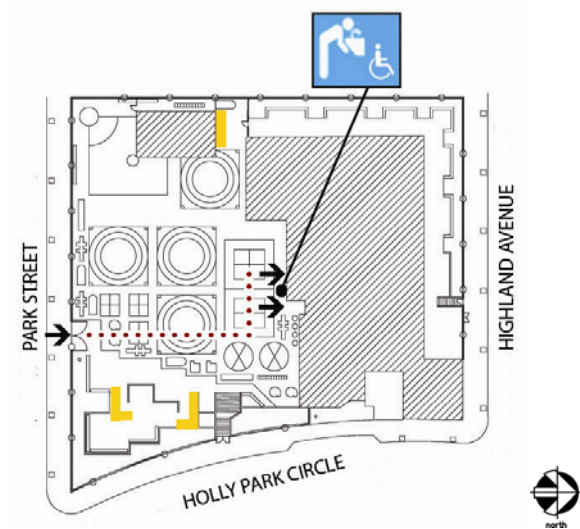


## Junipero Serra Elementary School

625 Holly Park Circle  
 San Francisco, CA 94110  
 Tel: (415) 695-5685  
 Fax: (415) 920-5194



## Site Plan

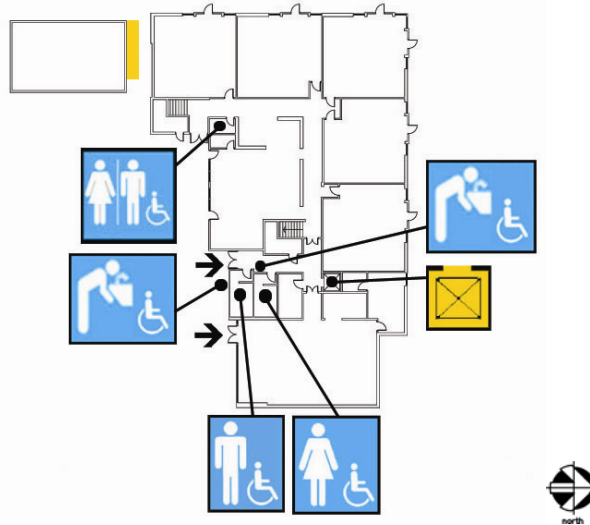
● Accessible ◆ Functionally accessible

Accessibility	Location	Condition
Access path of travel	From Park Street to interior yard	◆
Accessible parking stall	None	
Passenger loading zone	None	
Accessible entrance	South side of main building on Park Street	◆
Ramp	Near bungalow & Playground	◆
Boys' toilet, Girls' toilet, Unisex restroom	See other Floor Plans	
Drinking fountain	See other Floor plans	
Elevator	See other Floor Plans	
TTY (text telephone)	None	

## School Access Description

**Junipero Serra  
 Elementary School**

625 Holly Park Circle  
 San Francisco, CA 94110  
 Tel: (415) 695-5685  
 Fax: (415) 920-5194



**Lower Level Floor Plan**

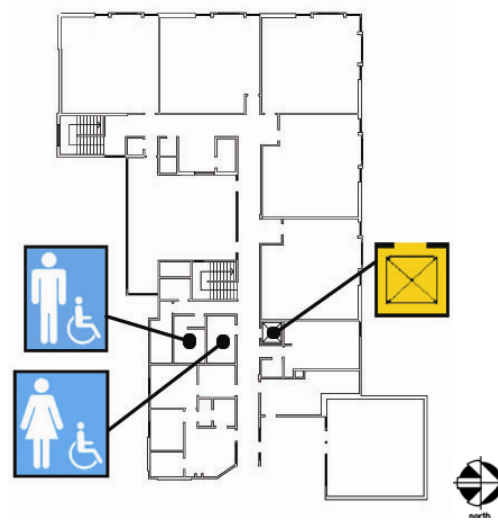
• Accessible ♦ Functionally accessible

Accessibility	Location	Condition
Access path of travel	From interior play yard	
Accessible parking stall	Not Applicable	
Passenger loading zone	Not Applicable	
Accessible entrance	Not Applicable	
Ramp	Not Applicable	
Boys' toilet, Girls' toilet, Unisex restroom	Boys & Girls Rest rooms on south side of lower level- Unisex Restroom on west side of lower level; Accessible	♦
Drinking fountain	Exterior on south side of building; Interior; near restrooms on south side of building	♦
Elevator	Accessible, near multi-purpose room	♦
TTY (text telephone)	None	

**School Access Description**










## Junipero Serra Elementary School

625 Holly Park Circle  
San Francisco, CA 94110  
Tel: (415) 695-5685  
Fax: (415) 920-5194



## Upper Level Floor Plan

● Accessible ◆ Functionally accessible

Accessibility		Location	Condition
	Access path of travel	Along corridors	◆
	Accessible parking stall	Not Applicable	
	Passenger loading zone	Not Applicable	
	Accessible entrance	From elevator	◆
	Ramp	See Site Plan	
	Boys' toilet, Girls' toilet, Unisex restroom	Boys and Girls Toilets opposite elevator	◆
	Drinking fountain	Compliant but not accessible; corridor too narrow	
	Elevator	Accessible; near main office	◆
	TTY (text telephone)	None	

### School Access Description