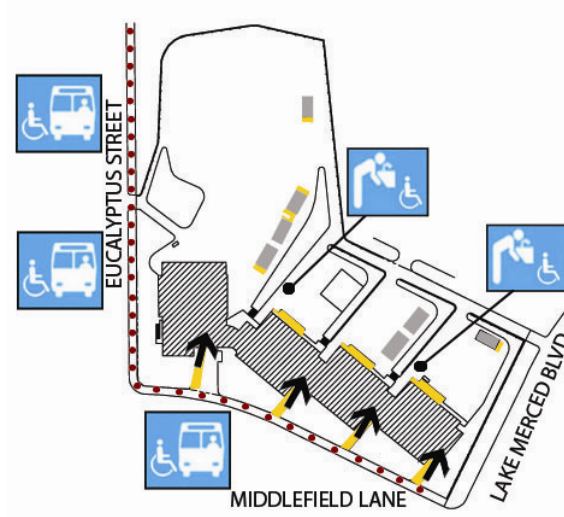


Lakeshore Alternative Elementary School

220 Middlefield Drive
San Francisco, CA 94132
Tel: (415) 759-2825
Fax: (415) 753-8312



● Accessible ◆ Functionally accessible

Site Plan

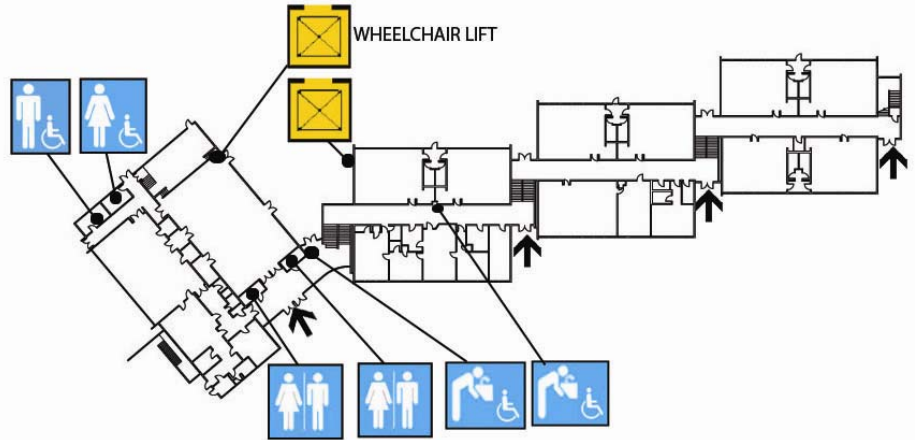
Accessibility		Location	Condition
	Access path of travel	From Middlefield Drive to entrances of Main Building, and Buildings 1, 2 and 3	◆
	Accessible parking stall	None – standard parking along streets	
	Passenger loading zone	One each on Middlefield Drive, and Eucalyptus Street	◆
	Accessible entrance	One each at Main Building, and Buildings 1, 2, and 3, and each Bungalow	◆
	Ramp	One each leading to entrances at Main Building and Buildings 1, 2, and 3, and to each Bungalow	◆
	Boys' toilet, Girls' toilet, Unisex restroom	See other Floor Plans	
	Drinking fountain	One each at northeast sides of Buildings 1 and 3 at Play Yard	◆
	Elevator	See Floor Plans	
	TTY (text telephone)	None	

School Access Description

Note: Main Building and Buildings 1, 2 and 3 are connected by interior stairs only. Access paths are connected from the sidewalk on Middlefield Drive only










Lakeshore Alternative Elementary School

220 Middlefield Drive
San Francisco, CA 94132
Tel: (415) 759-2825
Fax: (415) 753-8312



First Floor Plan

● Accessible ◆ Functionally accessible

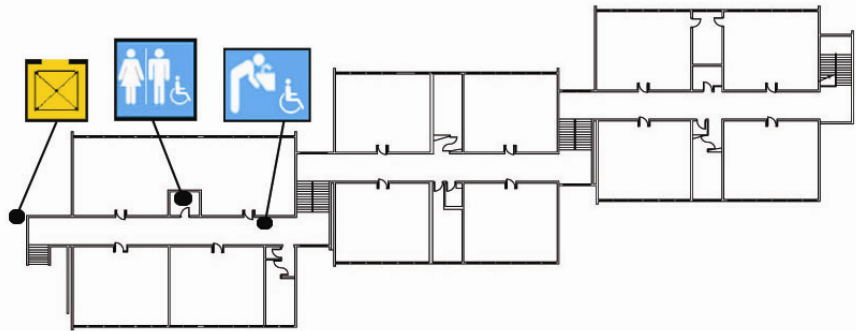
Accessibility	Location	Condition
 Access path of travel	Along hallways or inner spaces	◆
 Accessible parking stall	See Site Plan	◆
 Passenger loading zone	See Site Plan	
 Accessible entrance	At First Floor south side of Building B, and north sides of the Administration Building and Bungalow	◆
 Ramp	See Site Plan	
 Boys' toilet, Girls' toilet, Unisex restroom	Two Unisex Toilets just outside Auditorium, and Boys and Girls Toilets east of Cafeteria	◆
 Drinking fountain	One each in lobby outside Auditorium and along corridor in Building 3	◆
 Elevator	Accessible from Play Yard between Building 3 and Main Building	◆
 TTY (text telephone)	None	

School Access Description

Note: Basement is not accessible (not shown)









Lakeshore Alternative Elementary School

220 Middlefield Drive
San Francisco, CA 94132
Tel: (415) 759-2825
Fax: (415) 753-8312



• Accessible ♦ Functionally accessible

Second Floor Plan

Accessibility	Location	Condition
..... Access path of travel	Along hallways or inner spaces limited to Building 3 only	♦
 Accessible parking stall	See Site Plan	
 Passenger loading zone	See Site Plan	
 Accessible entrance	See First Floor Plan	
 Ramp	See Site Plan	
 Boys' toilet, Girls' toilet, Unisex restroom	Unisex Toilet midway along corridor of Building 3	♦
 Drinking fountain	Near Unisex Toilet in Building 3	♦
 Elevator	East end of Building 3	♦
 TTY (text telephone)	None	

School Access Description

Note: Buildings 1, 2 and 3 are connected by interior stairs only – the path of travel from elevator ends at the west end of the corridor in Building 3