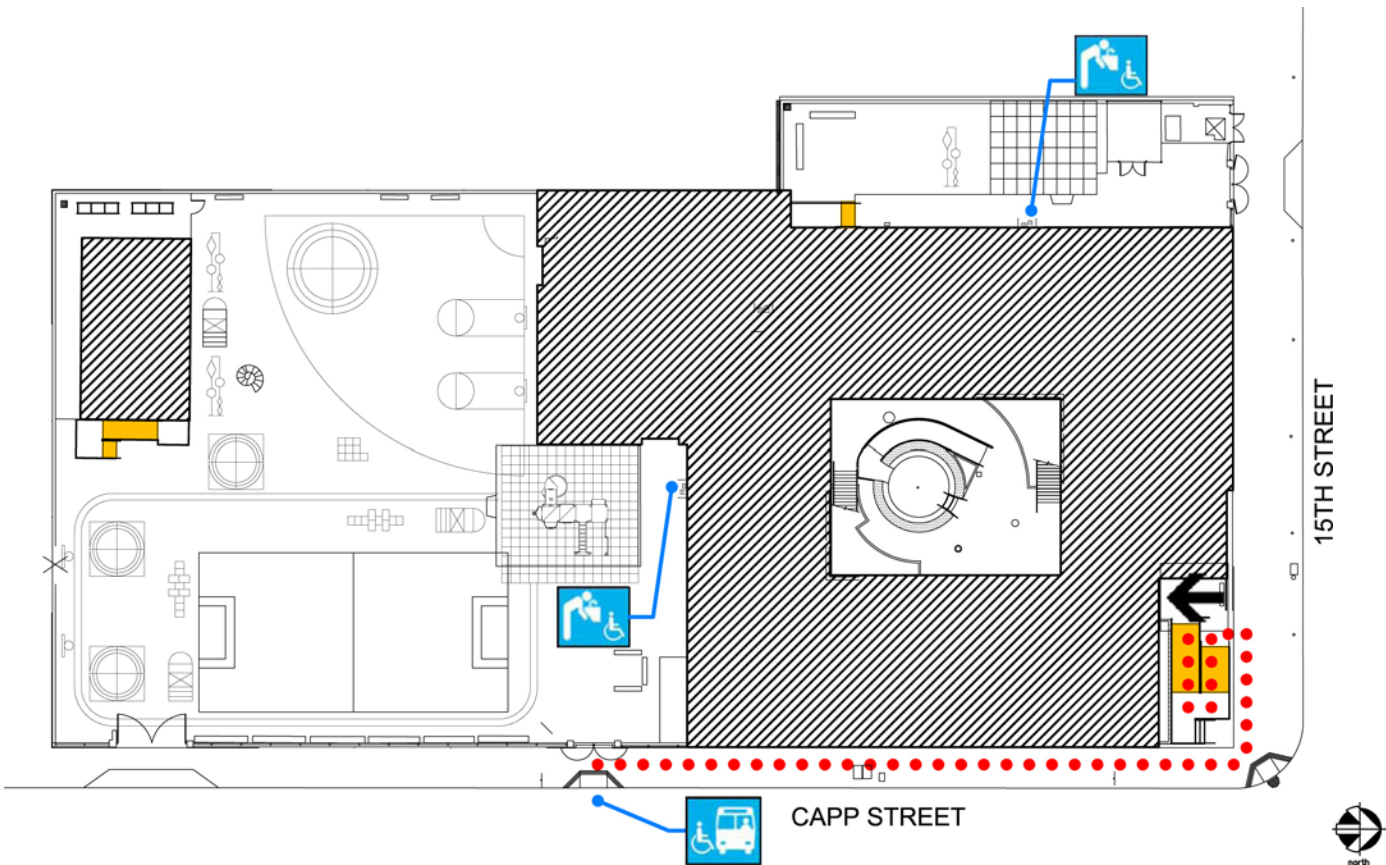








Marshall Elementary School

1575 15th Street
 San Francisco, CA 94103
[Map](#) [Public transit](#)
 Tel: (415) 241-6280
 Fax: (415) 241-6547

ALTERNATE FORMAT:
Español
Large Print



Site Plan

Accessibility		Location
.....	Access path of travel	Along Capp Street to 15th Street, then up ramp to front of building
	Accessible passenger loading zone	Along Capp Street
	Accessible entrance	On 15th Street.
	Ramp	First ramp to front entrance of main building. Second ramp on west side of building to playground. Third ramp to bungalow.
	Drinking fountain	2 drinking fountain along building, one for each playground.



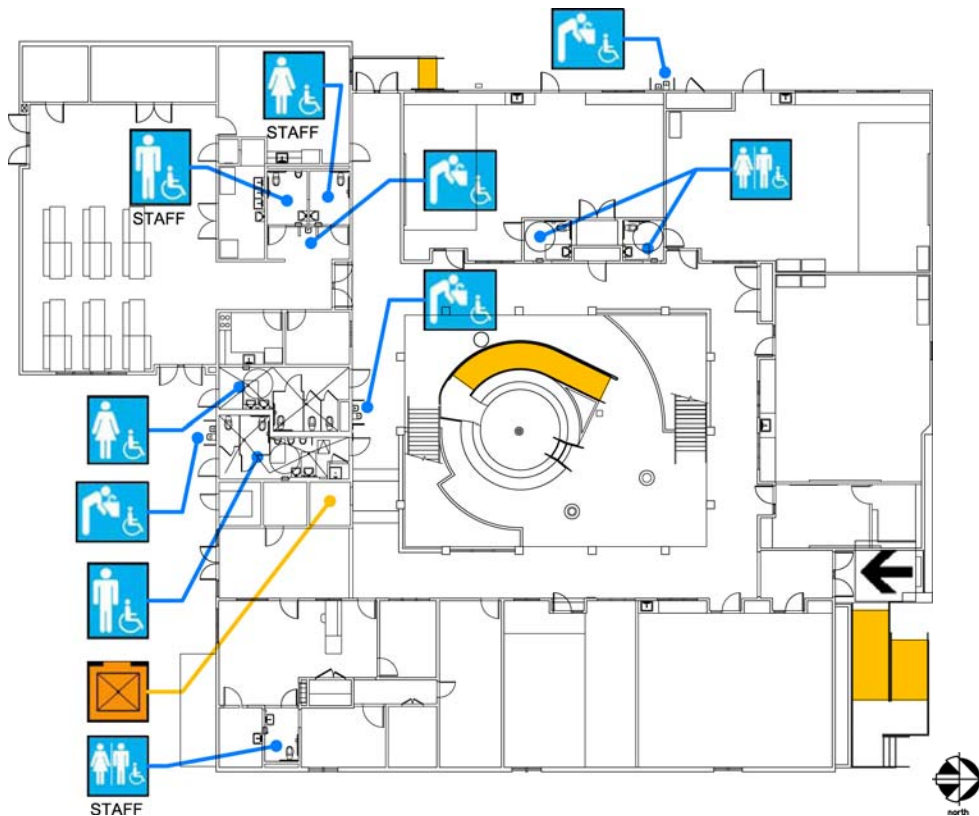
Marshall Elementary School

1575 15th Street
 San Francisco, CA 94103
[Map](#) [Public transit](#)
 Tel: (415) 241-6280
 Fax: (415) 241-6547






ALTERNATE
 FORMAT:

Español

Large Print



First Floor Plan

Accessibility		Location
	Accessible entrance	From 15th Street, then up ramp to front of building
	Ramp	First ramp to front entrance of main building. Second ramp on west side of building to playground. Third ramp in courtyard.
	Boy's, Girl's, and Unisex restroom	Student restrooms on south side of building and in kindergarten classrooms. Staff restrooms in administrative area and cafeteria.
	Drinking fountain	4 drinking fountains available: 2 on exterior by the playgrounds, 1 in corridor by student restrooms, and 1 by staff restrooms in cafeteria.
	Elevator	South side of building, next to student restrooms.



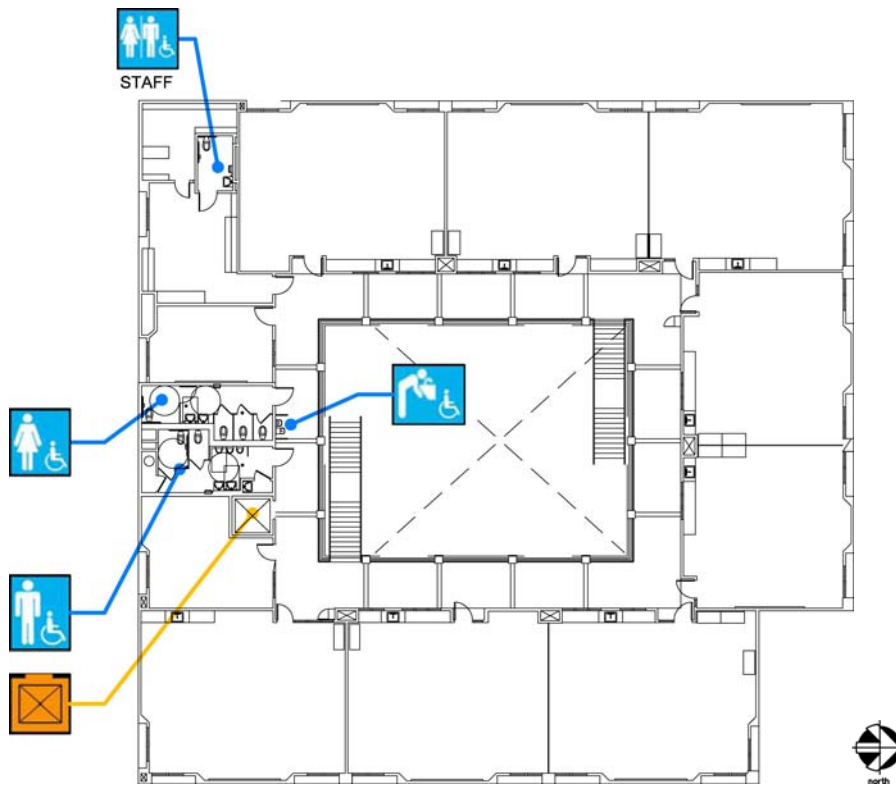
Marshall Elementary School

1575 15th Street
San Francisco, CA 94103
[Map](#) [Public transit](#)
Tel: (415) 241-6280
Fax: (415) 241-6547




ALTERNATE
FORMAT:

Español

Large Print



Second Floor Plan

Accessibility		Location
	Boy's, Girl's, and Unisex restroom	Student restrooms on south side of building. Staff restroom in teacher's lounge on southwest corner of building.
	Drinking fountain	In corridor, outside student restrooms.
	Elevator	South side of building, next to student restrooms.



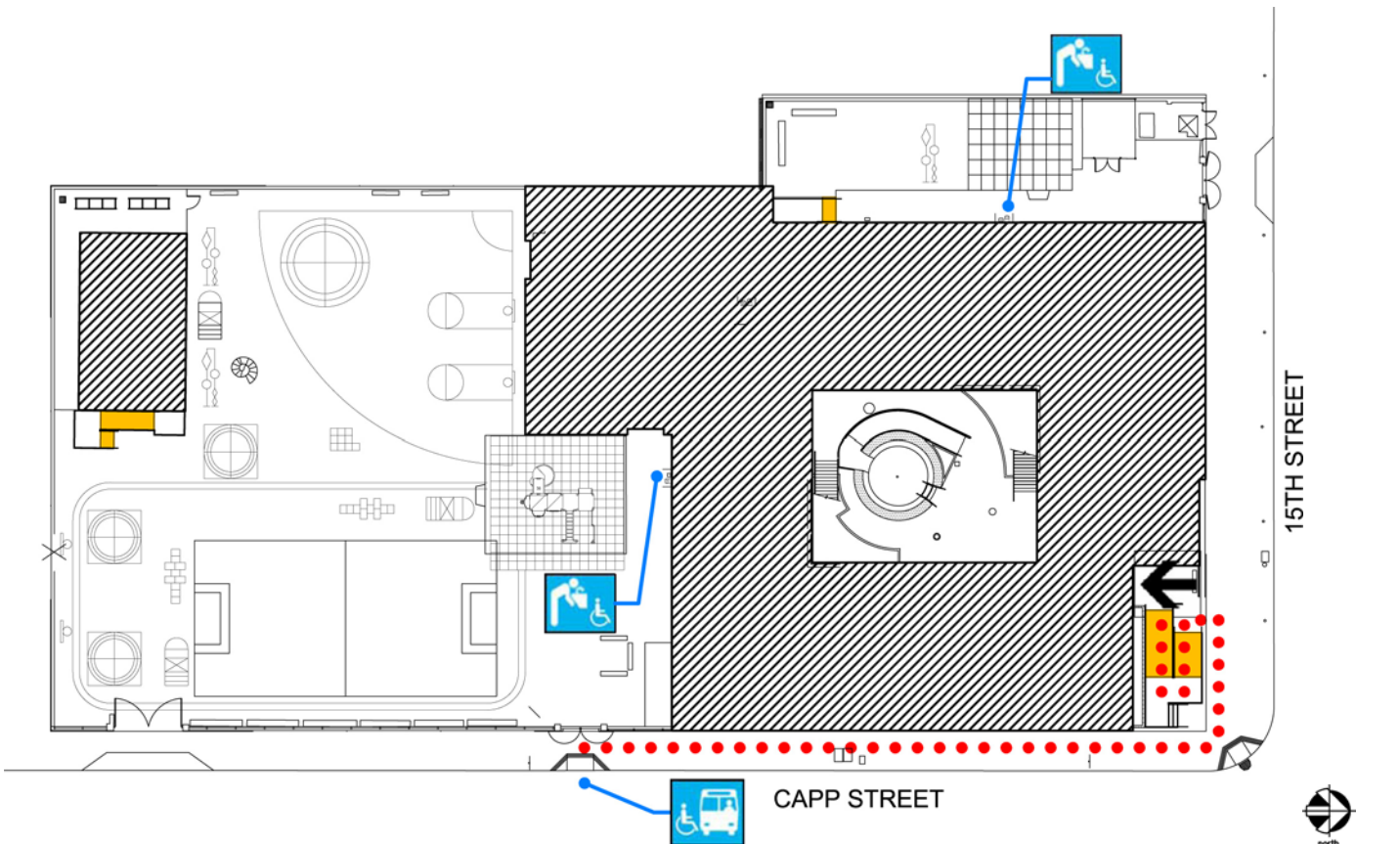
Marshall Elementary School

1575 15th Street
San Francisco, CA 94103
[Map](#) [Public transit](#)
Tel: (415) 241-6280
Fax: (415) 241-6547



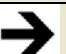


ALTERNATE
FORMAT:

Español

Large Print



校舍平面圖

方便殘障人士使用的設施		位置
	通道	沿 Capp 街到 15 街，然後上坡道到校舍正門
	殘障人士上落專區	沿 Capp 街
	通道入口	在 15 街
	輪椅坡道	第一條坡道通往主校舍正門；第二條坡道在校舍的西面直通操場；第三條坡道則通往平房
	飲水器	校舍有兩部飲水器，每一操場各一部



Marshall Elementary School

1575 15th Street
San Francisco, CA 94103

[Map](#) [Public transit](#)

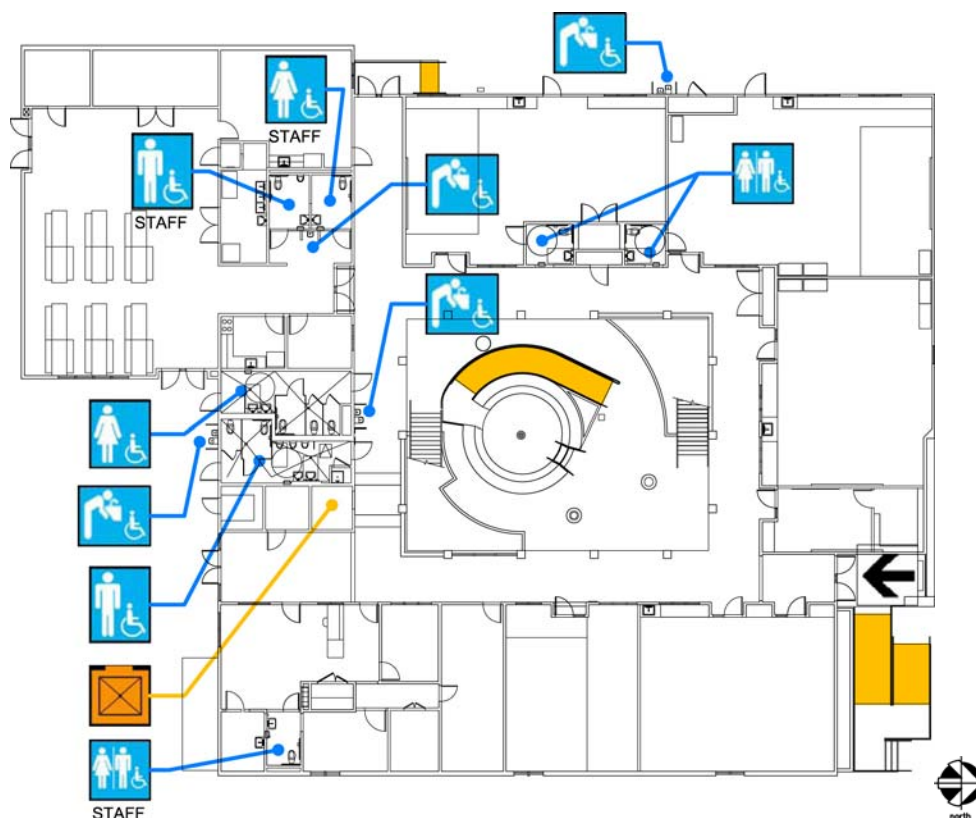
Tel: (415) 241-6280

Fax: (415) 241-6547

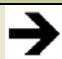




ALTERNATE
FORMAT:

Español

Large Print



一樓平面圖

方面殘障人士使用的設施		位置
	通道入口	由 15 街上坡道到校舍正門
	輪椅坡道	第一條坡道通往主校舍的正門；第二條坡道在校舍的西面直通操場；第三條坡道則在庭院
	男生/女生及男女可用洗手間	學生洗手間在校舍的南面和在幼稚園課室內。教職員洗手間在行政人員辦公地方和飯堂。
	飲水器	共有 4 部飲水器，兩部在外面（操場旁），一部在學生洗手間旁的走廊，另一條在教職員洗手間旁的飯堂
	升降機	在校舍的南面（學生洗手間旁）



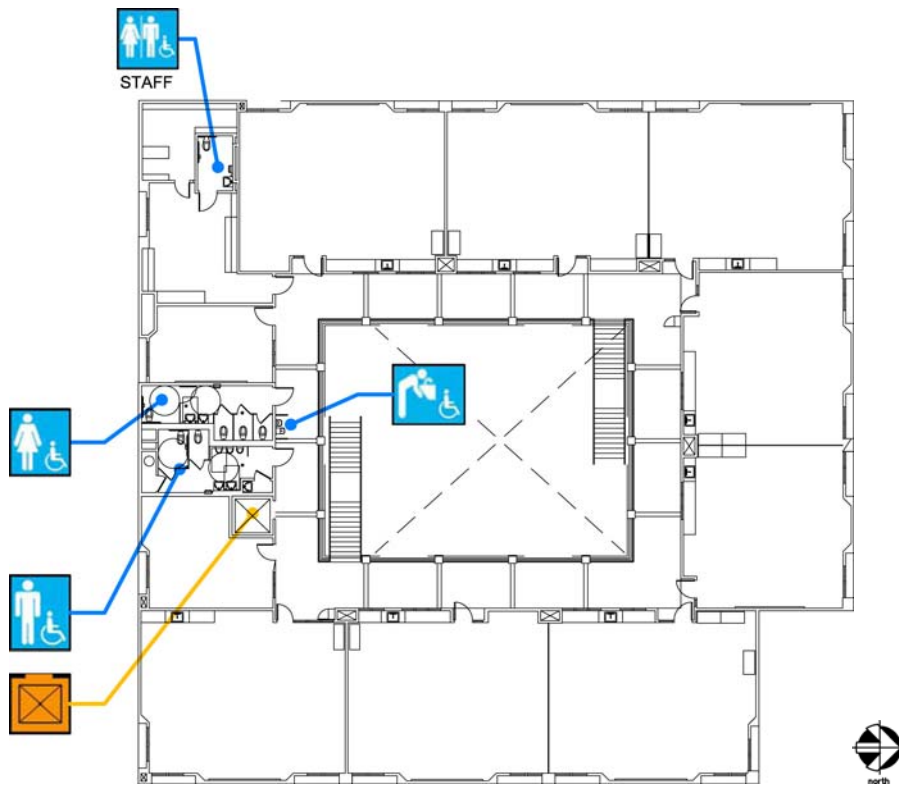
Marshall Elementary School

1575 15th Street
San Francisco, CA 94103
[Map](#) [Public transit](#)
Tel: (415) 241-6280
Fax: (415) 241-6547




ALTERNATE
FORMAT:

Español

Large Print



二樓平面圖

方便殘障人士使用的設施		位置
	男生/女生及男女可用洗手間	學生洗手間在校舍的南面。教職員洗手間在校舍西南面角落的教師休息室內
	飲水器	在走廊（學生洗手間外面）
	升降機	在校舍南面（學生洗手間旁）



Marshall Elementary School

1575 15th Street
San Francisco, CA 94103

[Map](#) (mapa) [Public transit](#) (Transporte público)

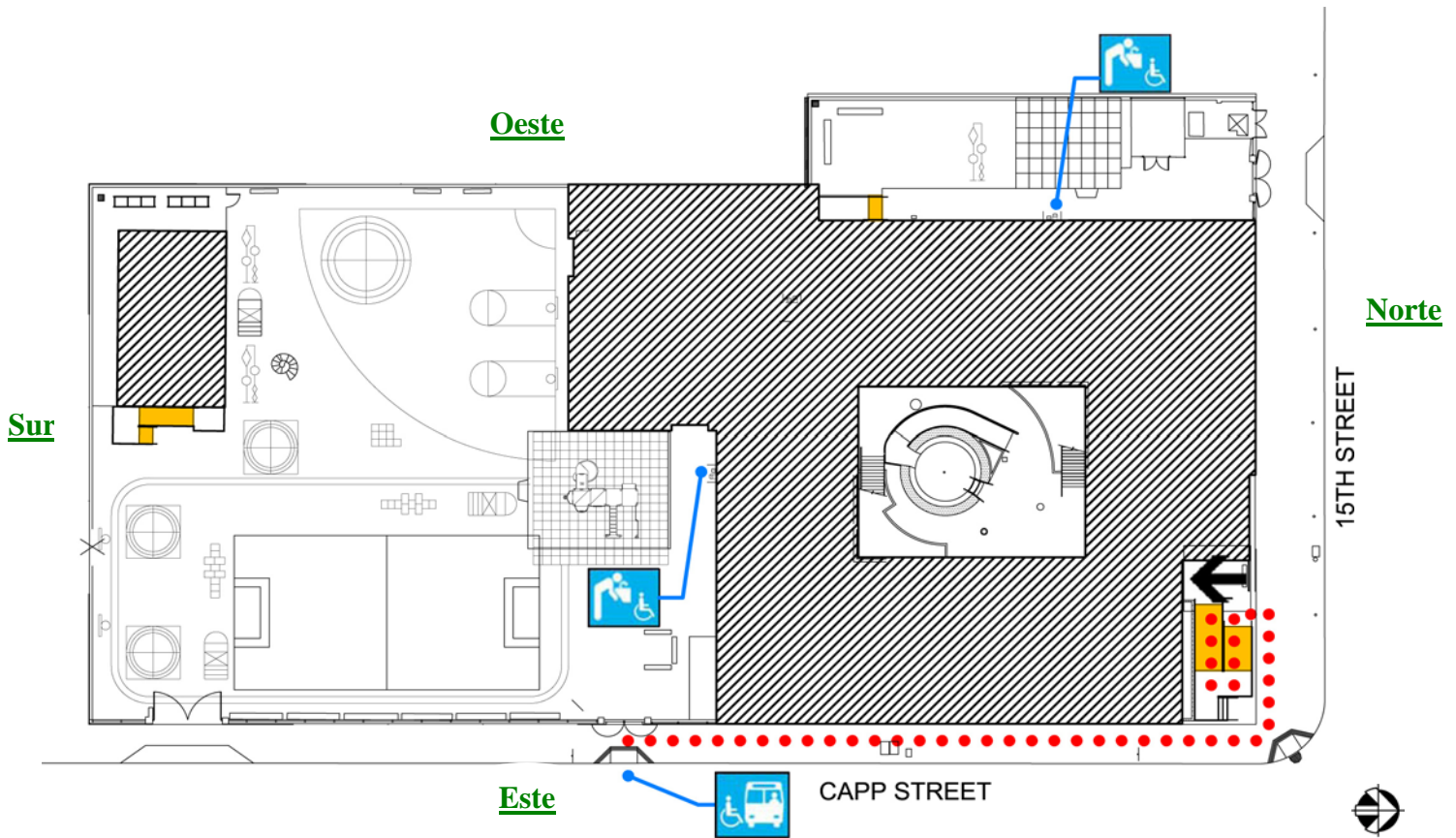
Tel: (415) 241-6280

Fax: (415) 241-6547






ALTERNATE
FORMAT:

Español

Large Print



Plano de las instalaciones

Accesibilidad		Ubicación
	Acceso peatonal	En la calle Capp hacia la calle 15, por las rampas hacia el frente del edificio.
	Zona de acceso para pasajeros	Por la calle Capp.
	Entradas con acceso	En la calle 15, por la rampa hacia el frente del edificio.
	Rampas	Una en la entrada principal al edificio. Otra por el lado oeste del edificio hacia el patio de juegos. La tercera hacia el salón portátil (bungaló).
	Bebederos	2 por el edificio, uno para cada patio de juegos.



Marshall Elementary School

1575 15th Street
San Francisco, CA 94103

[Map](#) (mapa) [Public transit](#) (Transporte público)

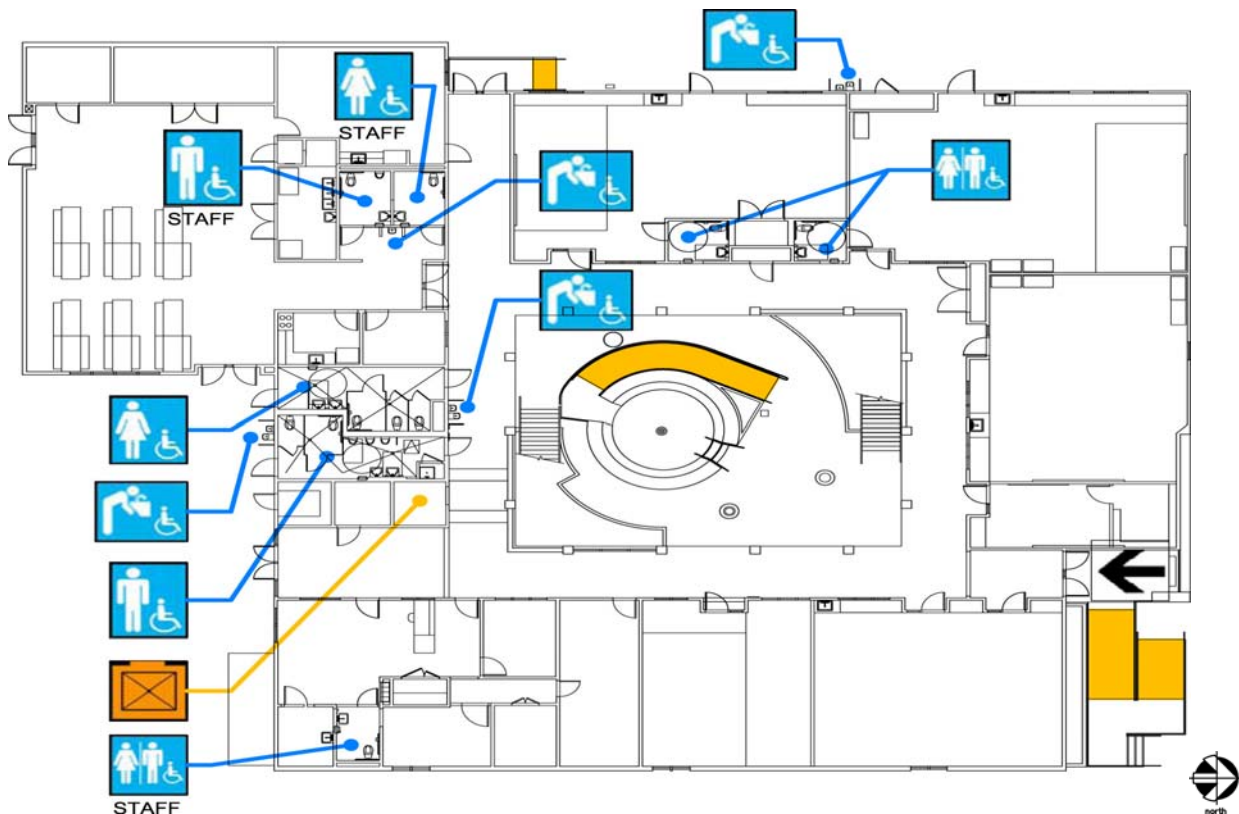
Tel: (415) 241-6280

Fax: (415) 241-6547






ALTERNATE
FORMAT:

Español

Large Print



Plano del primer piso

Accesibilidad		Ubicación
	Entradas con acceso	En la calle 15, por la rampa hacia el frente del edificio.
	Rampas	Una rampa en el frente del edificio principal. Otra en el lado oeste del edificio hacia el patio de juegos y la tercera en el patio central.
	Baños de niños, niñas, y de uso común	Para los estudiantes en el lado sur del edificio y en el salón de kindergarten. Los de empleados en el área administrativa y la cafetería.
	Bebedores	Hay 4 disponibles. 2 en el exterior por los patios de juegos, uno por el corredor por los baños de estudiantes, y uno por los baños de empleados en la cafetería.
	Elevadores	Por el lado sur del edificio, junto a los baños de estudiantes.



Marshall Elementary School

1575 15th Street
San Francisco, CA 94103

[Map](#) (mapa) [Public transit](#) (Transporte público)

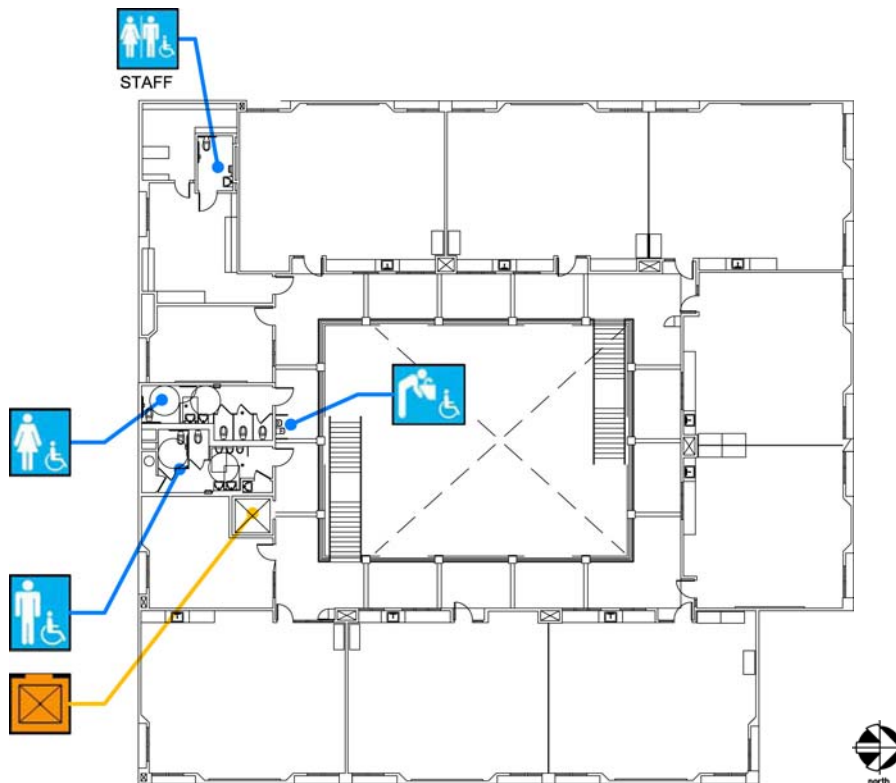
Tel: (415) 241-6280

Fax: (415) 241-6547




ALTERNATE
FORMAT:

Español

Large Print



Plano del segundo piso

Accesibilidad		Ubicación
	Baños de niños, niñas, y de uso común	Los de estudiantes en el lado sur del edificio. Para el personal en el salón de maestros, en la esquina suroeste del edificio.
	Bebedores	Por el corredor, afuera de los baños para estudiantes.
	Elevadores	Por el lado sur del edificio, junto a los baños de estudiantes.