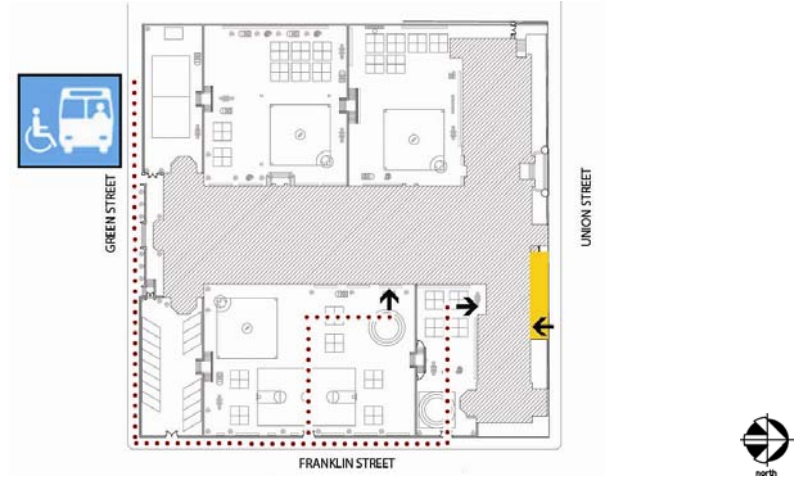


# RL Stevenson Elementary School

2051 34th Avenue  
San Francisco, CA 94116  
Tel: (415) 759-2837  
Fax: (415) 749-2844



## Site Plan

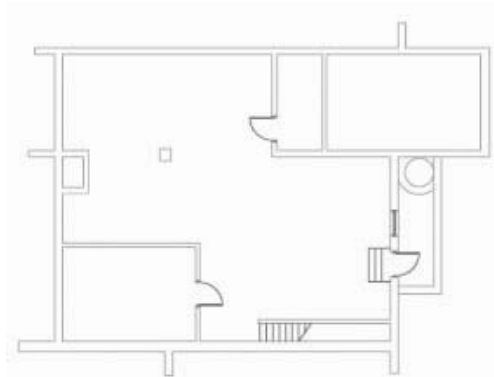
• Accessible ♦ Functionally accessible

Accessibility	Location	Condition
Access path of travel	Main entrance from 34th Avenue, east side of school Rear entrance from 35th Avenue, west side of school	•
Accessible parking stall	None	
Passenger loading zone	Main entrance on 34th Avenue Rear entrance on 35th Avenue	•
Accessible entrance	Main entrance from 34th Avenue Rear entrance from 35 <sup>th</sup> Avenue via ramp	•
Ramp	At 35th Avenue to rear entrance	•
Boys' toilet, Girls' toilet, Unisex restroom	See other plans for locations	
Drinking fountain	In yards	•
Elevator	At west side of school by rear entrance	•
TTY (text telephone)	None	

### School Access Description

**RL Stevenson  
Elementary School**



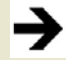





2051 34th Avenue  
San Francisco, CA 94116  
Tel: (415) 759-2837  
Fax: (415) 749-2844



**THIS FLOOR IS NOT ACCESSIBLE**

**Basement Floor Plan**

• Accessible ♦ Functionally accessible

Accessibility		Location	Condition
.....	Access path of travel	Not applicable	
	Accessible parking stall	Not applicable	
	Passenger loading zone	Not applicable	
	Accessible entrance	Not applicable	
	Ramp	Not applicable	
	Boys' toilet, Girls' toilet, Unisex restroom	See other plans for locations	
	Drinking fountain	See other plans for locations	
	Elevator	No elevator access to this floor	
	TTY (text telephone)	None	

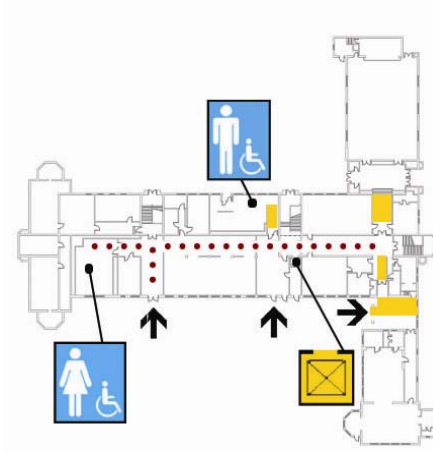
**School Access Description**

**Accessibility:**

• This floor is not a public space. It is not accessible.

# RL Stevenson Elementary School

2051 34th Avenue  
San Francisco, CA 94116  
Tel: (415) 759-2837  
Fax: (415) 749-2844



## First Floor Plan

• Accessible ♦ Functionally accessible

Accessibility	Location	Condition
Access path of travel	Along corridors	•
Accessible parking stall	Not applicable	
Passenger loading zone	Not applicable	
Accessible entrance	Main entrance from 34th Avenue, east side of school Rear entrance from 35th Avenue via ramp, west side of school	•
Ramp	Interior ramps along corridors	•
Boys' toilet, Girls' toilet, Unisex restroom	Unisex student restrooms between kindergarten classrooms on east side of school and classrooms on west side of school Student restrooms across from middle stair Unisex restroom by rear entrance	•
Drinking fountain	Outside of Girls restroom across from middle stair	•
Elevator	By rear entrance on west side of school	•
TTY (text telephone)	None	

### School Access Description

**Accessibility:**

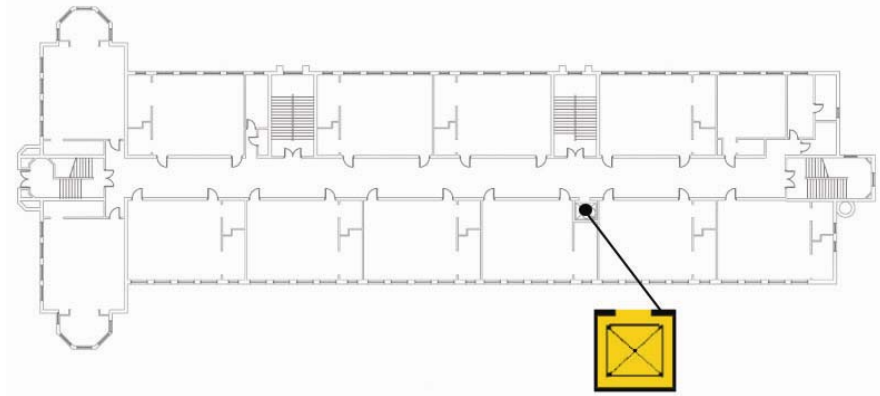
- Access to portable classrooms is via ramps.
- Auditorium stage is not accessible.

**Drinking fountains:**

- Drinking fountains located outside of restrooms are not ADA compliant.

## RL Stevenson Elementary School



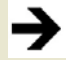





2051 34th Avenue  
San Francisco, CA 94116  
Tel: (415) 759-2837  
Fax: (415) 749-2844



**THIS FLOOR IS NOT ACCEPTABLE**

## Second Floor Plan

• Accessible ♦ Functionally accessible

Accessibility	Location	Condition
..... Access path of travel	Along corridors	•
 Accessible parking stall	Not applicable	
 Passenger loading zone	Not applicable	
 Accessible entrance	Not applicable	
 Ramp	Not applicable	
 Boys' toilet, Girls' toilet, Unisex restroom	Unisex restroom and staff restrooms at north end of corridor	•
 Drinking fountain	In middle of corridor	•
 Elevator	At west side of corridor	•
 TTY (text telephone)	None	

### School Access Description