

# General Education Transportation Services

**Board of Education  
February 28, 2012**



# What's Changing and Why?

- **Yellow bus services for general education students attending elementary and middle schools**
  - **Students with IEPs that require transportation will not be impacted**
- **Support Board's policy guidelines**
- **Minimize the use of general fund contributions for transportation**

# December 2010 – Board Policy

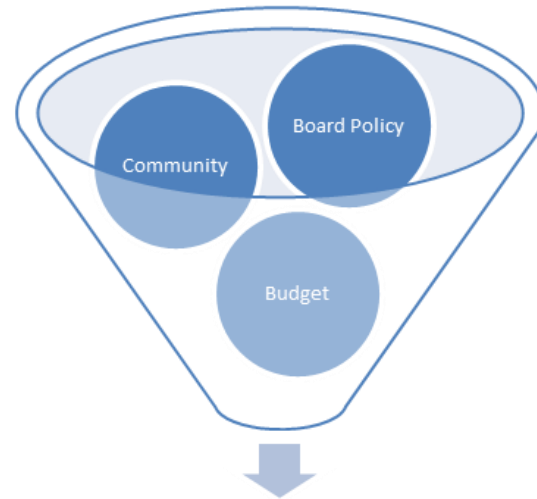
- **New transportation policy (108-24SP1)**
- **First revision since 1970s (horse shoe plan)**
- **Designed to support strategic plan commitments and new student assignment policy**
- **Development process included discussions at community meetings throughout the city**

# December 2010 – Board Policy

- Support choice in student assignment as a tactic for creating diversity
- Provide reasonable access
  - to English Learner & newcomer pathways
  - from CTIP1 to K8 and immersion
  - to attendance area school
- Support middle school feeder patterns
- Limited services to after school if feasible and necessary to support District's vision

# February 2011 – 3 Year Plan

- Three year implementation plan shared (list of schools)
- Multilingual FAQ and feedback forms
- Feedback reviewed by Transportation Working Group



General Education Transportation Services  
Three Year Implementation Plan  
2011-12, 2012-13, 2013-14

# Explored Charging Fees

- **Not feasible because**
  - many of our students are low-income
  - State puts cap on amount districts can charge
    - if we charged fees, not likely to cover costs
  - significant administrative costs associated with developing a fee-for-service model

# August 2011 – Implemented Year 1

- **Eleven schools lost general education transportation services: Chavez, Garfield, Grattan, key, Marshall, Miraloma, Parker, Peabody, Sunset, Sutro, and Yick Wo**
- **Four schools experienced a reduction in general education transportation services: Alice Fong Yu, Clarendon, Lilienthal, and Rooftop**

# Snapshot of Year 1 Changes

## 2010-11 (last year)

- 44 buses
- 58 elementary schools
- 5 middle schools
- 3,658 students
  - 3,300 elementary
  - 358 middle

## 2011-12 (this year)

- 38 buses
- 47 elementary schools
- 5 middle schools
- 2,716 students
  - 2,400 elementary
  - 379 middle

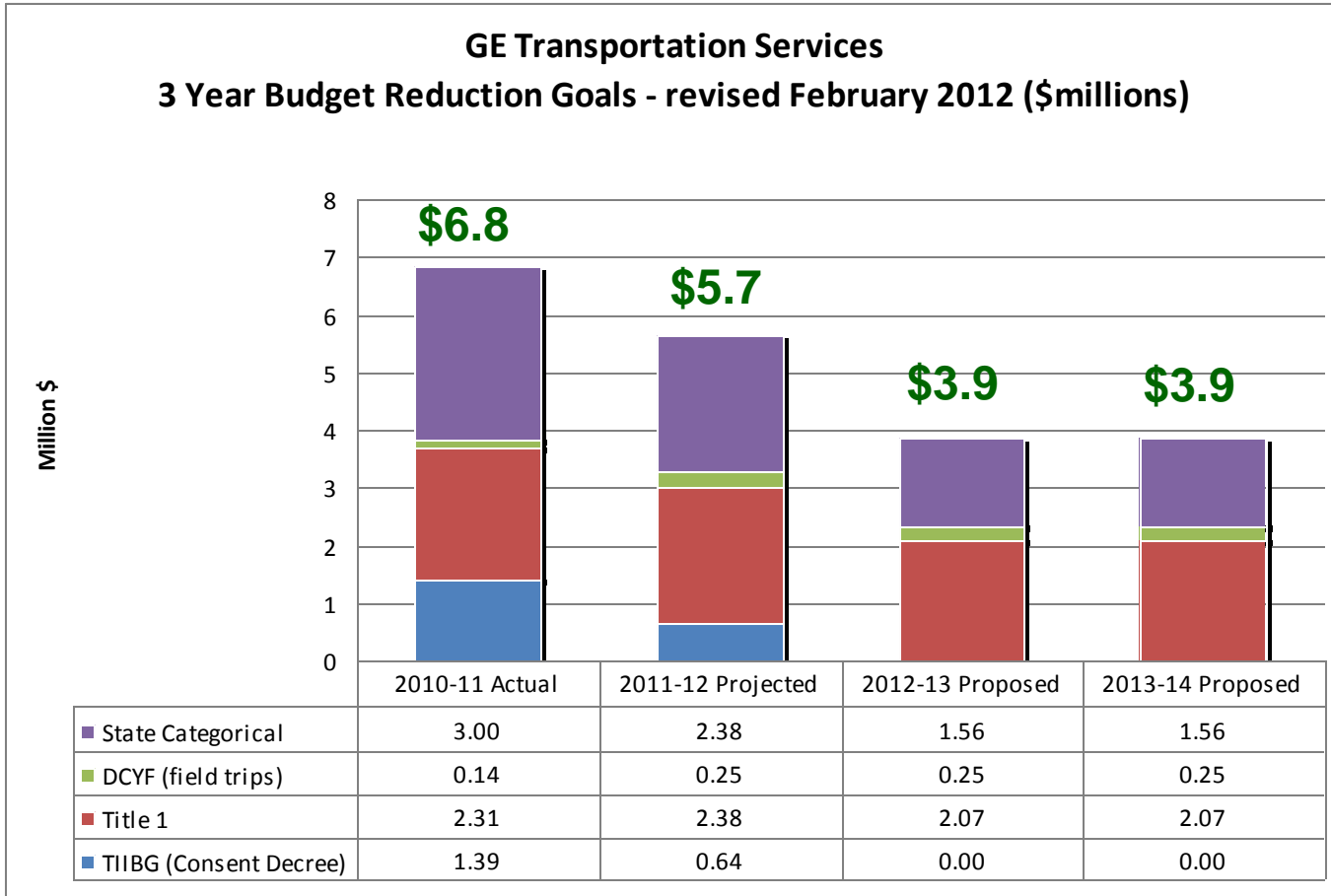


# Current Budget

Current Funding: Gen Ed Transportation	Amount
<b>State Categorical</b> (can only be spent on transportation in FY 2011-12)	<b>\$2.38 million</b>
<b>TIIBG (Consent Decree) + UGF</b>	<b>\$0.64 million</b>
<b>DCYF (field trips)</b>	<b>\$0.25 million</b>
<b>Title 1</b> (Current NCLB law: 20% of Title 1 funds for transportation or Supplemental Education Services tutoring for students attending Program Improvement schools)	<b>\$2.38 million</b>
<b>Total funds</b>	<b>\$5.65 million</b>

**2,400 K5 riders + 379 middle school riders = 2,779 riders**  
**Cost per student: \$2,033 (approx.)**

# 3 Year Budget Reduction Goals



# Modified Services- Elementary

## February 2011 Proposal – list to be finalized

Schools	Policy Guidelines
Lakeshore and Milk (2)	Maintain services that support diverse enrollments
Bryant, Carver, Cobb, Drew, Harte, Malcolm X, Muir, and Sanchez (8)	Support choice as a tactic for creating diverse enrollments at historically under enrolled and racially isolated schools
CEC, Lau*, MEC, Moscone, Spring Valley (5)	Provide English Learners and Newcomers with reasonable access to language pathways
AFYu, Carmichael, Lawton, Lilienthal, Revere, Rooftop, SF Community (7)	Provide students living in CTIP1 with reasonable access to K8 schools
CIS@DeAvila, W Portal, Alvarado, Fairmount, Flynn, and Monroe (6)	Provide students living in CTIP1 with reasonable access to immersion pathways
Clarendon and SF Public Montessori (2)	Provide students living in CTIP1 with reasonable access to JBBP and Montessori
Chin, Sherman, and Webster (3)	Provide reasonable access to attendance area school

# Losing Services - Elementary

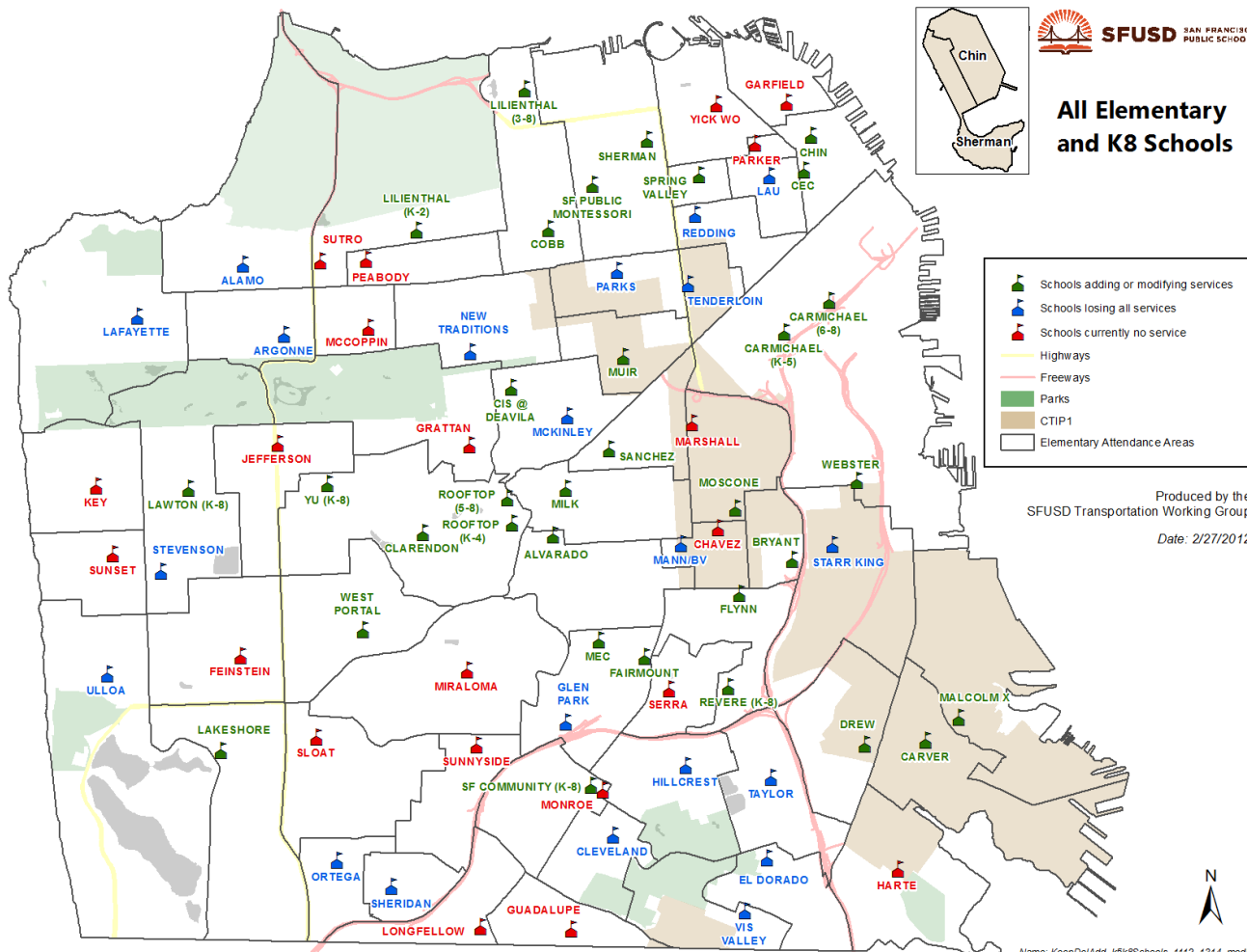
## February 2011 Proposal – list to be finalized

- Currently analyzing to ensure proposal meets policy guidelines – list subject to change by mid-March 2012

Alamo	Lafayette	Starr King
Argonne	McKinley	Stevenson
Buena Vista	New Traditions	Taylor
Cleveland	Ortega	Tenderloin
El Dorado	Parks	Ulloa
Glen Park	Redding	Vis Valley ES
Hillcrest	Sheridan	

# 3-Year Plan – Elementary School

## February 2011 Proposal – to be finalized



# Implementing Year 2 – Timeline

- **Early March**
  - Finalize routes and stops
  - Develop materials to engage and inform families
- **Mid March - April**
  - Share information and gather feedback
- **April – May**
  - Review feedback
  - Finalize routes
  - Launch request for service process

# Implementing Year 2 – Middle

- **November 2011**, shared information about middle school services for 2012-13
  - Aptos, from Carver and Starr King
  - Francisco, from Treasure Island
  - Giannini, from Drew
  - Hoover, from Monroe, Moscone, and Serra
  - Lick, from Harte
  - Marina, from Treasure Island
- **Mid-March** - share route specific information
  - Existing services will be redesigned
  - Services will be added to Marina

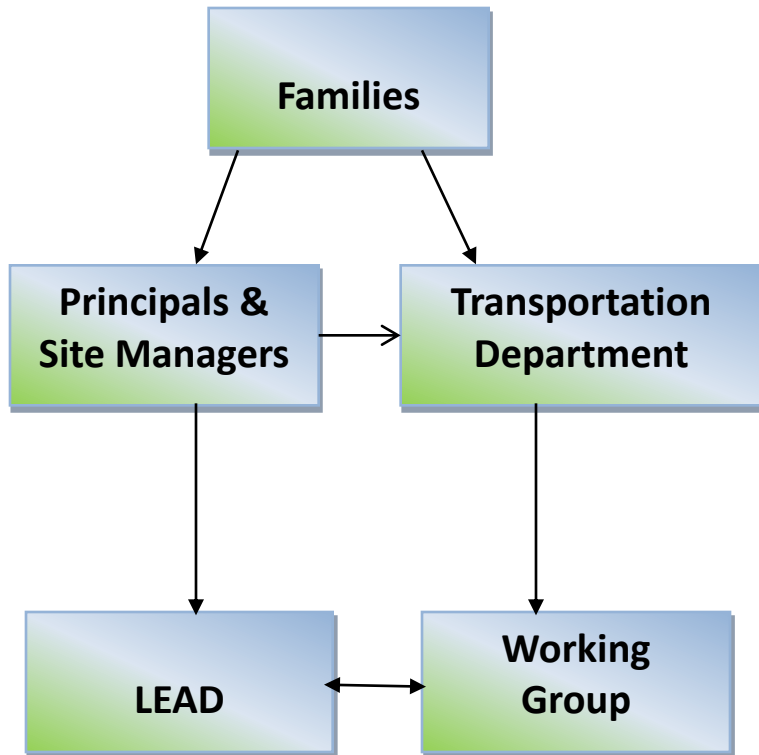
# Implementing Year 2 – Elementary

## Mid-March 2012

- Memo to principals with data and rationale
- Multilingual materials for families
  - Letter to families
  - Frequently Asked Questions
  - Family Feedback Form
  - Information about alternatives to yellow bus
- Family input process
- Letter to non-SFUSD after school providers



# Options for Family Input



- Early Education Schools – family support meetings
- Feedback Forms (multilingual)
  - Transportation Department
  - EPC
  - School
- Phone Transportation

# Alternatives to Yellow Bus

- Safe Routes to School: [www.sfsaferoutes.org](http://www.sfsaferoutes.org)
- Walking School Bus: [www.walksf.org](http://www.walksf.org)
- Family Biking: [www.sfbike.org](http://www.sfbike.org)
- SchoolPool: [www.WePool2School.org](http://www.WePool2School.org)
- MUNI: [www.sfmta.com](http://www.sfmta.com)

# Immediate Next Steps

## Early March

- Complete analysis of proposal to ensure adheres to policy guidelines
- Develop multilingual materials for families (e.g., FAQ and family feedback forms)
- Develop plan for family support meetings at Early Education Schools

## Mid-March

- Announce changes

# Appendix

## Overview of Current Services

# Current Services – Middle School

School	AM	PM	Total	% Total
Aptos	102	77	179	26%
Francisco	18	18	36	5%
Giannini	39	26	65	9%
Hoover	214	191	405	58%
Lick	6	4	10	1%
<b>Total</b>	<b>379</b>	<b>316</b>	<b>695</b>	<b>100%</b>
	55%	45%	100%	

**Services in 2012-13 will be redesigned**

# Current Services - Elementary

- 47 elementary schools
- More PM riders than AM riders
  - 1,761 students in the morning
  - 2,400 students in the evening
- 62% of riders go to 17 schools
  - Lakeshore, Lilienthal, Rooftop, Ulloa, Carver, Sherman, Muir, Malcolm X, Alvarado, Carmichael, Spring Valley, Webster, Revere, Lawton, Stevenson, Parks, and Taylor

# Current Services- After School

Number of afternoon riders by location and by CTIP area

- 38% of all riders go to a stop located in CITP1

Location	CTIP1	CTIP2	CTIP3	CTIP4	CTIP5	Total	%
SFUSD EES	399	24	375	191	77	1066	44%
SFUSD ES	44	99	48	6	13	210	9%
SFUSD MS		7			2	9	0%
Non-SFUSD After School	110	62	10	224	52	458	19%
Other	356	182	51	52	17	658	27%
<b>Total</b>	909	374	484	473	161	<b>2,401</b>	100%
	38%	16%	20%	20%	7%	100%	